



Daily trading plan for Mar 29, 2007

1. ESM7 IN PREVIOUS DAY

Open	High	Low	Closing
1434.00	1436.50	1424.25	1429.50

2. PIVOTS FOR ESM7

	Daily	Weekly	Monthly	Yearly
R3	1448.17	1510.00	1528.58	1722.00
R2	1442.33	1480.50	1496.67	1583.50
R1	1435.92	1463.75	1452.83	1506.00
PPT	1430.08	1434.25	1420.92	1367.50
S1	1423.67	1417.50	1377.08	1290.00
S2	1417.83	1388.00	1345.17	1151.50
S3	1411.42	1371.25	1301.33	1074.00

3. FOCUS NUMBERS (intra-day Position trading)

Sell levels	Buying levels
1436.50(First Sell#)	1417.25 (first Buy#)
1441.75 (Second Sell#)	1412.75 (second Buy#)

4. MAJOR RESISTANCE AND SUPPORT LEVELS FOR TODAY

Resistance	1431.75	1436.00	1438.50	1440.50	1442.75
Support	1424.25	1417.25	1415.75	1410.00	1405.75

5. WEEKLY OUTLOOK

First three days of this week, all major markets moved back down to last week's breakout level. Volume decreased on upside and increased on downside. This is not bullish sign. Last two days of this week, we may see a little bounce.

Technical analysis: ES couldn't move up to fill its first gap created on Feb. 27, 2007. Yesterday it created another down gap. The longer those gap keep opening, the stronger the bias will be on the downside. Please keep this in mind.

Weekly major resistance level is 1465 and support level is 1412.

ES WEEKLY Chart



6. DAILY OUTLOOK

Yesterday Fed. Chairman Ben only cheered the market up for a half hour. Rest of the day was shadowed with news from Iran and high oil price. Today we will have a GDP report in early morning. We may see ES goes down first and later bounce up for closing.

ESM7 DAILY Chart

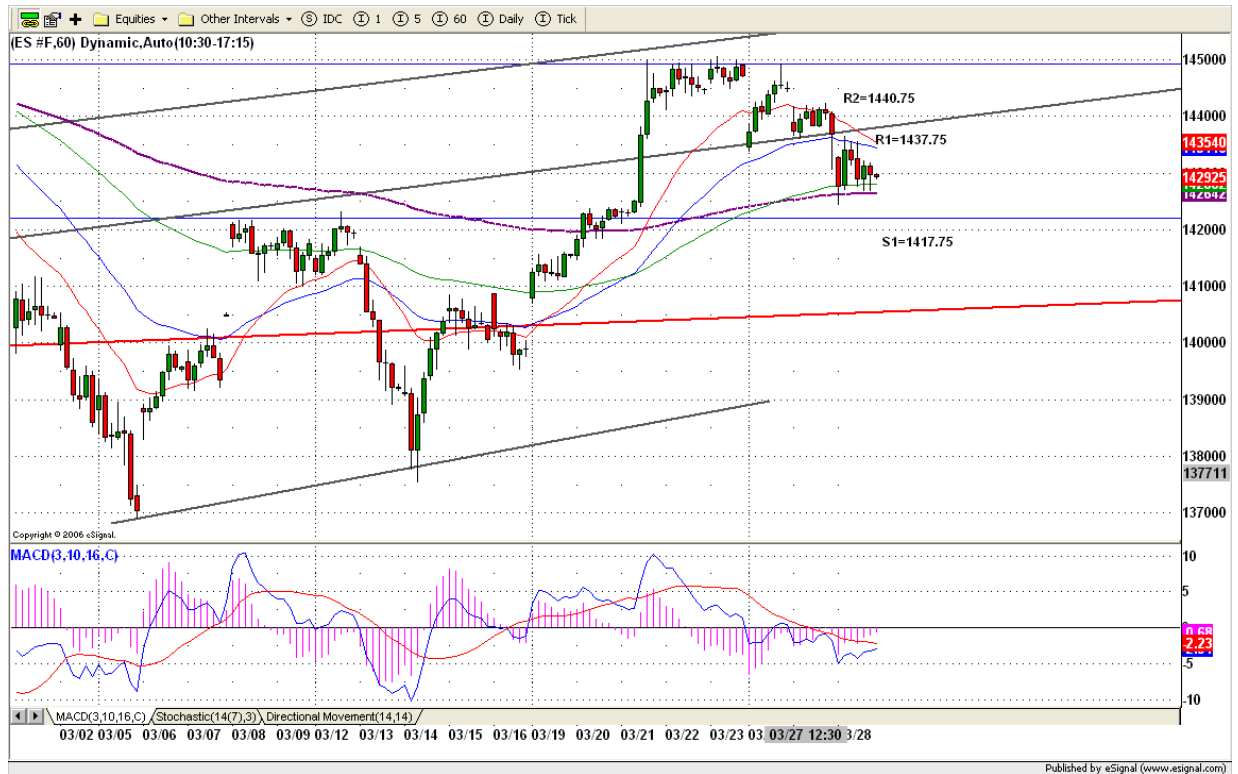


7. TRADING STRATEGY FOR Mar. 27, 2007

Yesterday ES made another early narrow range breakout movement and closed at middle of the trading range, but overall the market still was bearish. Today GDP report at 8:30am, we may see price dip into 1417.25 if price fails to hold 1424.25 level. But later afternoon, bounce up for closing should be expected.

Intraday swing position entry on short side:
141436.50 (scalping) 1441.75 (agg) and 1447.50(cons)
Intraday swing position entry on long side:
1417.25 (agg) and 1412.25 (cons)

ESM7 INTRADAY



8. PREDICTION FOR TODAY'S MOVEMENT

Current (interval=1.95)

1441.41	+2/8
1439.45	+1/8
1437.50	8/8
1435.55	7/8
1433.59	6/8
1431.64	5/8
1429.69	4/8
1427.73	3/8
1425.78	2/8
1423.83	1/8
1421.88	0/8
1419.92	-1/8
1417.97	-2/8

Up (Interval=3.90)

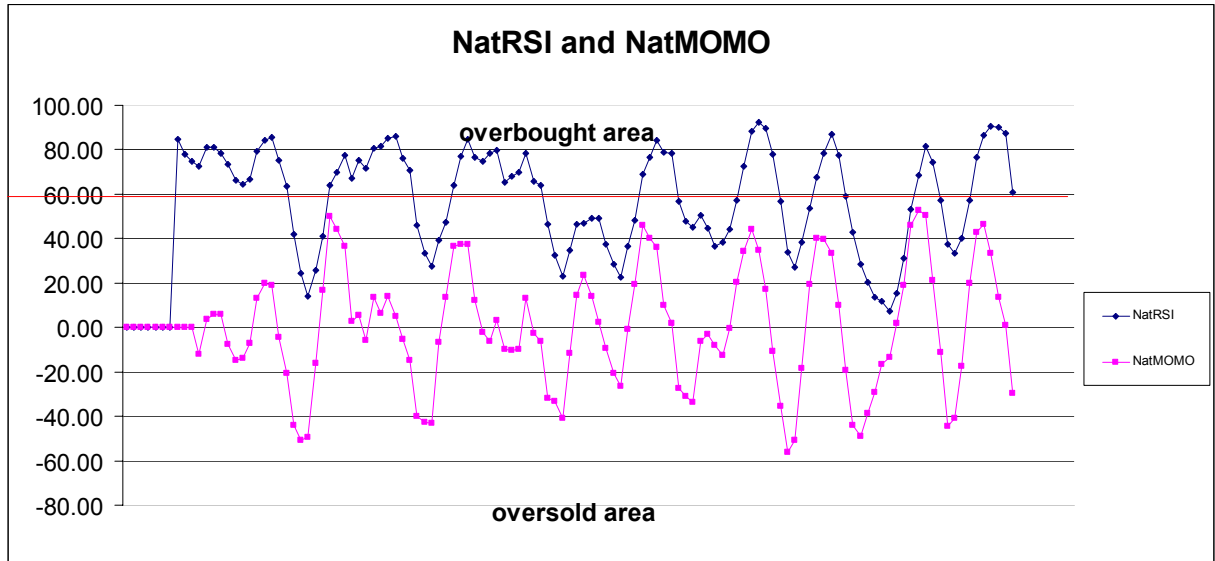
1445.31	+2/8
1441.41	+1/8
1437.50	8/8
1433.59	7/8
1429.69	6/8
1425.78	5/8
1421.88	4/8
1417.97	3/8
1414.06	2/8
1410.16	1/8
1406.25	0/8
1402.34	-1/8
1398.44	-2/8

Down (Interval=1.95)

1433.59	+2/8
1431.64	+1/8
1429.69	8/8
1427.73	7/8
1425.78	6/8
1423.83	5/8
1421.88	4/8
1419.92	3/8
1417.97	2/8
1416.02	1/8
1414.06	0/8
1412.11	-1/8
1410.16	-2/8

9. OTHER INDICATORS

NatRSI (1day)	NatRSI (5day)	NatMoMo	ATR 10	Waist number
0.32	0.60	-29.75	12.83	1431.63
neutral	overbought			



10. WEEKLY ECONOMIC REPORTS (<http://www.tradethenews.com/weekly-calendar.php>)

Projected Economic Releases for This Week				
(Consensus Forecasts vs. Previous Report)				
Mar 29				
Initial Claims	8:30	03/24		NA vs 316K
GDP-Final	8:30	Q4		2.2% vs 2.2%
Chain Deflator-Final	8:30	Q4		1.7% vs 1.7%
Help-Wanted Index	10:00	Feb		31 vs 32
Mar 30				
Personal Income	8:30	Feb		0.3% vs 1.0%
Personal Spending	8:30	Feb		0.3% vs 0.5%
Chicago PMI	9:45	Mar		49.5 vs 47.9
Construction Spending	10:00	Feb		-0.6% vs -0.8%
Mich Sentiment-Rev.	10:00	Mar		88.8 vs 88.8