



Daily trading plan for Mar 27, 2007

1. ESM7 IN PREVIOUS DAY

Open	High	Low	Closing
1447.75	1449.25	1433.75	1445.25

2. PIVOTS FOR ESM7

	Daily	Weekly	Monthly	Yearly
R3	1467.25	1510.00	1528.58	1722.00
R2	1458.25	1480.50	1496.67	1583.50
R1	1451.75	1463.75	1452.83	1506.00
PPT	1442.75	1434.25	1420.92	1367.50
S1	1436.25	1417.50	1377.08	1290.00
S2	1427.25	1388.00	1345.17	1151.50
S3	1420.75	1371.25	1301.33	1074.00

3. FOCUS NUMBERS (intra-day Position trading)

Sell levels	Buying levels
1457.25 (First Sell#)	1438.25 (first Buy#)
1461.75 (Second Sell#)	1433.75 (second Buy#)

4. MAJOR RESISTANCE AND SUPPORT LEVELS FOR TODAY

Resistance	1453.75	1458.25	1461.75	1467.25	1471.25
Support	1436.25	1430.75	1427.25	1420.25	1419.75

5. WEEKLY OUTLOOK

After last Wednesday's rally, all three major markets went sideway for next two days. On the positive side, all three markets did hold their gain in last two day. However the volume didn't follow through in the past two days. All three are short-term overbought and trading in daily resistance zones.

Price moves into a very important level – “make or die” level. If people don't see volume follow through, we should expect price to pull back soon. If we do see the volume follow through first two days this week, it is possible for our market to hold strong and breakout last two day's consolidation resistance level. In addition, the end of quarter is coming up this week; we may see window dressing and earnings anticipation for coming April's earning season.

For the technical analysis: ES June contract (ESM7) has a gap around 1461.25-1452.25, Continuation Contract ES#F has a gap around 1452.75 and SPX has a gap at 1449.57. We may see these gaps get filled first before ES starts to go down again to retest its 20 and 40 ema lines.

Weekly major resistance level is 1465 and support level is 1412.

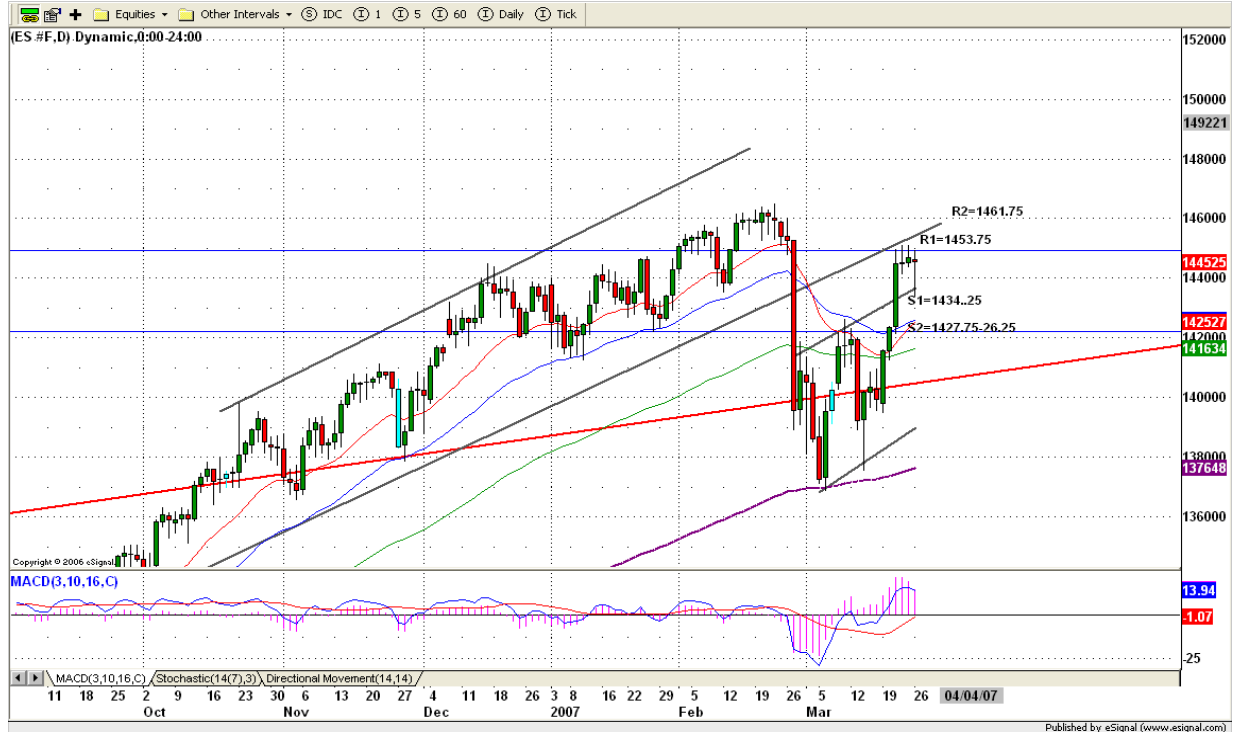
ES WEEKLY Chart



6. DAILY OUTLOOK

After New Home Sale report, ES broke last Friday's low and made a range breakout movement. But as soon as it hit the range breakout target, it moved back up to its opening price to squeeze shorts. Finally it closed with a minor loss. Markets are in struggle stage. Based on daily chart, upside to fill the gap still is still possible.

ESM7 DAILY Chart



7. TRADING STRATEGY FOR Mar. 27, 2007

Yesterday ES broke down but made it all back for the close. Today we may see price breakout upside if 1442 level can be held. If today's consumer report is good, we may see price breakout 1451 and push price into 1457 level or higher to 1461.75 to fill June contract's gap.

If ES fails to breakout 1453.75, we may see ES goes sideway again.

Intraday swing position entry on short side:

1457.25 (agg) and 1461.75(cons)

Intraday swing position entry on long side:

1438.25 (agg) and 1429.25-1428.25 (cons)

ESM7 INTRADAY



Copyright 2007 by Natusur.com Ltd. All rights are reserved. Photocopying and further distribution of this newsletter are strictly prohibited. Information, opinion, research, and commentary contained herein is obtained from sources believed to be reliable; their reliability, however, cannot be guaranteed. The maxim of Caveat Emptor applies – let the buyer beware! This newsletter is for education purpose only. It doesn't provide individual investment advice, or act as an investment advisor, or individually advocate the purchase or sale of any security or investment. In making any investment decision, you will rely solely on your own review and examination of the facts and the records relating to such investments. Past performance of our recommendations is not an indication of future performance. We shall have no liability of whatever nature in respect of any claim, damages, loss or expense arising out of or in connection with the reliance by you on the contents of our newsletter, any promotion, published material, alert or update.

8. PREDICTION FOR TODAY'S MOVEMENT

Current (interval=1.95)

1457.03	+2/8
1455.08	+1/8
1453.13	8/8
1451.17	7/8
1449.22	6/8
1447.27	5/8
1445.31	4/8
1443.36	3/8
1441.41	2/8
1439.45	1/8
1437.50	0/8
1435.55	-1/8
1433.59	-2/8

Up (Interval=1.95)

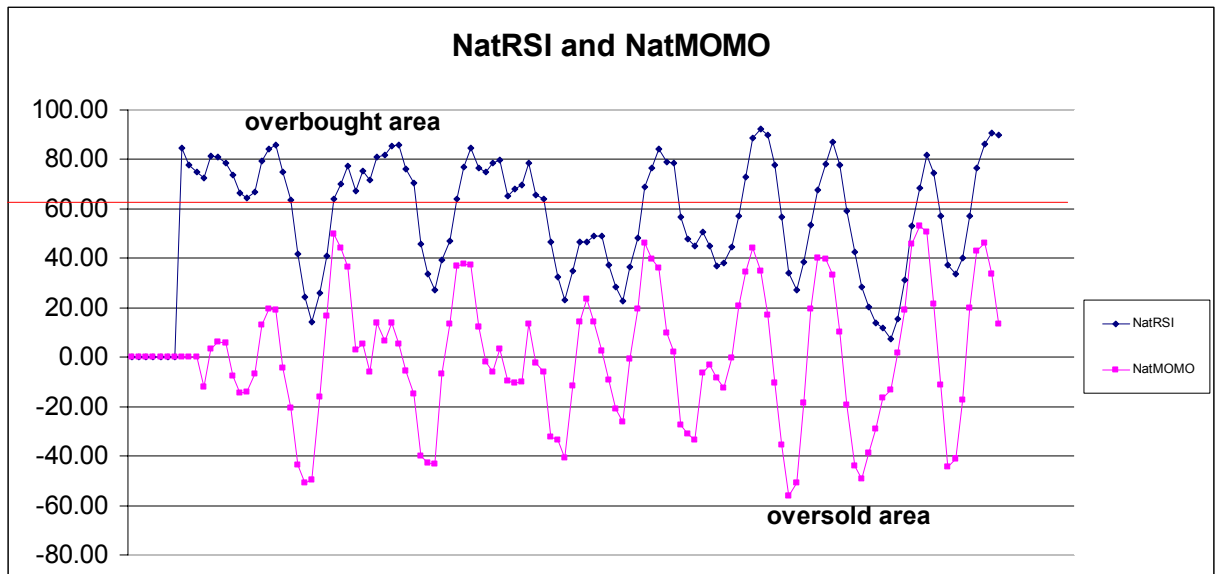
1464.84	+2/8
1462.89	+1/8
1460.94	8/8
1458.98	7/8
1457.03	6/8
1455.08	5/8
1453.13	4/8
1451.17	3/8
1449.22	2/8
1447.27	1/8
1445.31	0/8
1443.36	-1/8
1441.41	-2/8

Down (Interval=1.95)

1457.03	+2/8
1455.08	+1/8
1453.13	8/8
1451.17	7/8
1449.22	6/8
1447.27	5/8
1445.31	4/8
1443.36	3/8
1441.41	2/8
1439.45	1/8
1437.50	0/8
1435.55	-1/8
1433.59	-2/8

9. OTHER INDICATORS

NatRSI (1day)	NatRSI (5day)	NatMoMo	ATR 10	Waist number
0.44	0.89	13.47	16.25	1446.50
neutral	overbought			



10. WEEKLY ECONOMIC REPORTS (<http://www.tradethenews.com/weekly-calendar.php>)

Projected Economic Releases for This Week

(Consensus Forecasts vs. Previous Report)

Mar 27

Consumer Confidence	10:00	Mar	109.0 vs 112.5
---------------------	-------	-----	----------------

Mar 28

Durable Orders	8:30	Feb	3.0% vs -7.8%
Crude Inventories	10:30	03/23	NA vs 3924K

Mar 29

Initial Claims	8:30	03/24	NA vs 316K
GDP-Final	8:30	Q4	2.2% vs 2.2%
Chain Deflator-Final	8:30	Q4	1.7% vs 1.7%
Help-Wanted Index	10:00	Feb	31 vs 32

Mar 30

Personal Income	8:30	Feb	0.3% vs 1.0%
Personal Spending	8:30	Feb	0.3% vs 0.5%
Chicago PMI	9:45	Mar	49.5 vs 47.9
Construction Spending	10:00	Feb	-0.6% vs -0.8%
Mich Sentiment-Rev.	10:00	Mar	88.8 vs 88.8