



Daily trading plan for Feb 28, 2007

1. ESH7 IN PREVIOUS DAY

Open	High	Low	Closing
1438.75	1439.50	1389.00	1395.25

2. PIVOTS FOR ESH7

	Daily	Weekly	Monthly	Yearly
R3	1477.33	1476.42	1490.25	1722.00
R2	1458.42	1470.58	1468.50	1583.50
R1	1426.83	1462.17	1455.75	1506.00
PPT	1407.92	1456.33	1434.00	1367.50
S1	1376.33	1447.92	1421.25	1290.00
S2	1357.42	1442.08	1399.50	1151.50
S3	1325.83	1433.67	1386.75	1074.00

3. FOCUS NUMBERS (intra-day Position trading)

Sell levels	Buying levels
1413.25 (First Sell#)	1371.75-1373 (first Buy#)
1416-18 (Second Sell#)	1360.25-1357 (second Buy#)

4. MAJOR RESISTANCE AND SUPPORT LEVELS FOR TODAY

Resistance	1400.50	1408.00	1412.50	1417.25	1421.25
Support	1386.75	1379.75	1375.00	1371.75	1367.25

5. WEEKLY OUTLOOK

Wow. Last week before I left for my vacation, I mentioned a stronger movement should be expected very soon. Early this week (yesterday), we saw this move; it knocked down three major support levels and closed at low for 57.50 points loss from its Monday close. Weekly chart already gave us a warning signal which indicated this market would go down this week. Therefore, yesterday's sell off should not have surprised us.

This is first strong correction since last July. The 40-week moving average line is most bears' target. Watch for bounce.

Weekly major resistance level is 1456 and support level is 1375



6. DAILY OUTLOOK

Yesterday sell off for all markets was mainly from concern about globe financial markets' bubbles. There are no doubt the bubbles exist; it is just matter on when those bubbles will blow out. Gap down opening triggered overnight bulls stop run and broke down 1417 level to convince long term bulls to get off their long term positions. Snow balling selling situation created a massive downside pressure, and give us a strong resistance level 1437.50-38.25 for any future upside retracement.



7. TRADING STRATEGY FOR Feb. 28, 2007

Yesterday sell off leads market into the oversold territory. Consolidation move should be expected today. Also bounce should be expected if ES can hold price above 1391 level. Especially ES breaks out first hour range will give a bull's courage to try to regain the lost territory.

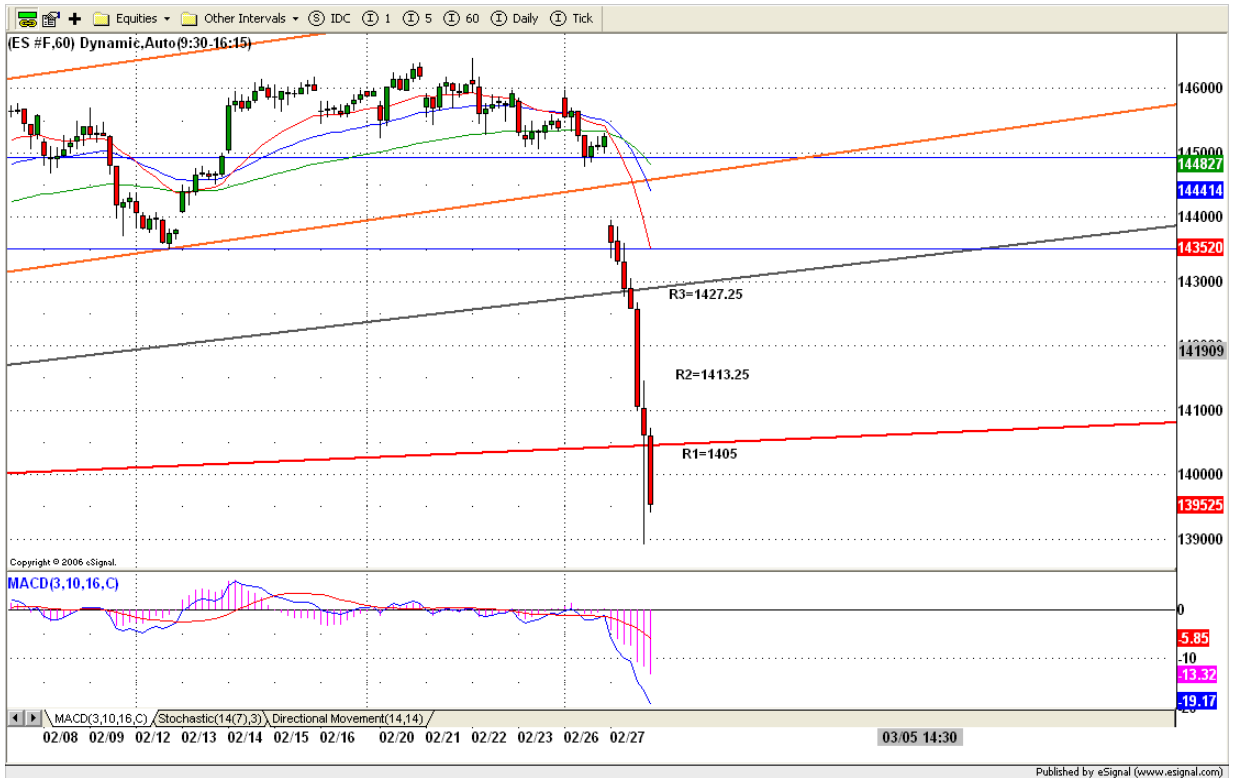
Using yesterday's low area as stop loss for scalping long side. As long as yesterday's low doesn't break, bulls will try to push price toward 1400-1405 area or higher to 1417 for testing. If we see 1417, short on bounce.

Intraday swing position entry on short side:

1413.25 (agg) and 1417.50(cons)

Intraday swing position entry on long side:

1375-74 (agg) and 1371-69.25 (cons)



Copyright 2007 by Natusus.com Ltd. All rights are reserved. Photocopying and further distribution of this newsletter are strictly prohibited. Information, opinion, research, and commentary contained herein is obtained from sources believed to be reliable; their reliability, however, cannot be guaranteed. The maxim of Caveat Emptor applies – let the buyer beware! This newsletter is for education purpose only. It doesn't provide individual investment advice, or act as an investment advisor, or individually advocate the purchase or sale of any security or investment. In making any investment decision, you will rely solely on your own review and examination of the facts and the records relating to such investments. Past performance of our recommendations is not an indication of future performance. We shall have no liability of whatever nature in respect of any claim, damages, loss or expense arising out of or in connection with the reliance by you on the contents of our newsletter, any promotion, published material, alert or update.

8. PREDICTION FOR TODAY'S MOVEMENT

Current (interval=7.82)

1453.13	+2/8
1445.31	+1/8
1437.50	8/8
1429.69	7/8
1421.88	6/8
1414.06	5/8
1406.25	4/8
1398.44	3/8
1390.63	2/8
1382.81	1/8
1375.00	0/8
1367.19	-1/8
1359.38	-2/8

Up (Interval=3.91)

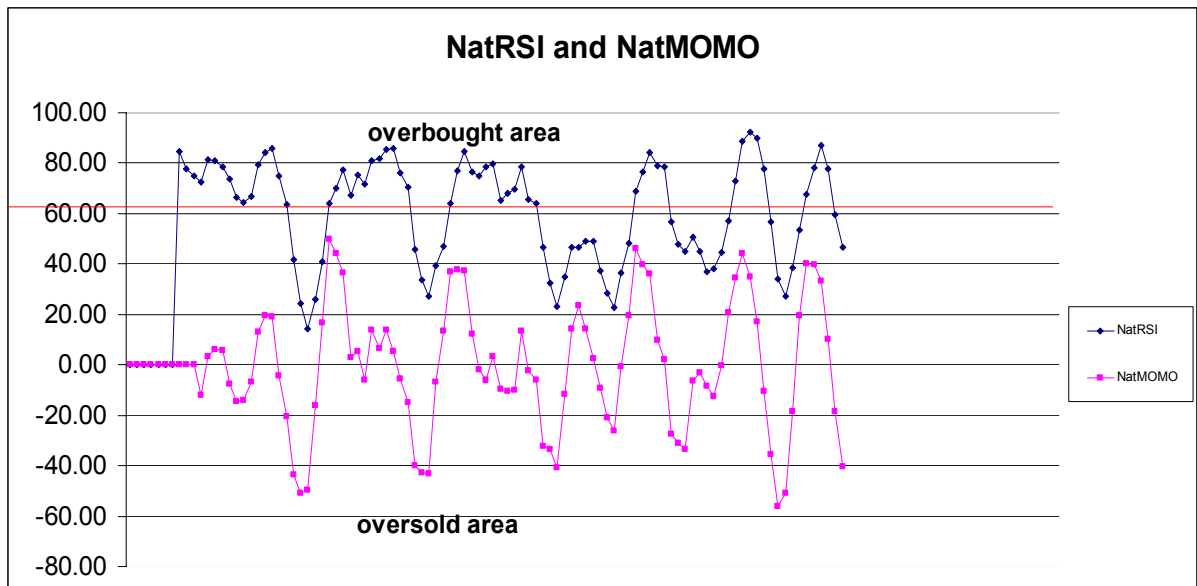
1429.69	+2/8
1425.78	+1/8
1421.88	8/8
1417.97	7/8
1414.06	6/8
1410.16	5/8
1406.25	4/8
1402.34	3/8
1398.44	2/8
1394.53	1/8
1390.63	0/8
1386.72	-1/8
1382.81	-2/8

Down (Interval=3.91)

1414.06	+2/8
1410.16	+1/8
1406.25	8/8
1402.34	7/8
1398.44	6/8
1394.53	5/8
1390.63	4/8
1386.72	3/8
1382.81	2/8
1378.91	1/8
1375.00	0/8
1371.09	-1/8
1367.19	-2/8

9. OTHER INDICATORS

NatRSI (1day)	NatRSI (5day)	NatMoMo	ATR 10	Waist number
0.07	0.46	-40.21	13.25	1417.00
Oversold	neutral			



10. WEEKLY ECONOMIC REPORTS (<http://www.tradethenews.com/weekly-calendar.php>)

Projected Economic Releases for Wednesday

(Consensus Forecasts vs. Previous Report)

February 28

GDP-Prelim.	8:30	Q4	2.3% vs. 3.5%
Chain Deflator-Prelim.	8:30	Q4	1.5% vs. 1.5%
Chicago PMI	9:45	Feb	50.0 vs. 48.8
New Home Sales	10:00	Jan	1100K vs. 1120K
Crude Inventories	10:30	02/23	N/A vs. 3694K