



Daily trading plan for Feb 6, 2007

1. ESH7 IN PREVIOUS DAY

Open	High	Low	Closing
1451.75	1454.25	1448.00	1453.75

2. PIVOTS FOR ESH7

	Daily	Weekly	Monthly	Yearly
R3	1462.25	1494.33	1490.25	1722.00
R2	1458.25	1474.17	1468.50	1583.50
R1	1456.00	1463.58	1455.75	1506.00
PPT	1452.00	1443.42	1434.00	1367.50
S1	1449.75	1432.83	1421.25	1290.00
S2	1445.75	1412.67	1399.50	1151.50
S3	1443.50	1402.08	1386.75	1074.00

3. FOCUS NUMBERS (intra-day Position trading)

Sell levels	Buying levels
1459.50-60.75 (First Sell#)	1447.75 (first Buy#)
1463.25-1465.25 (Second Sell#)	1441.75 (second Buy#)

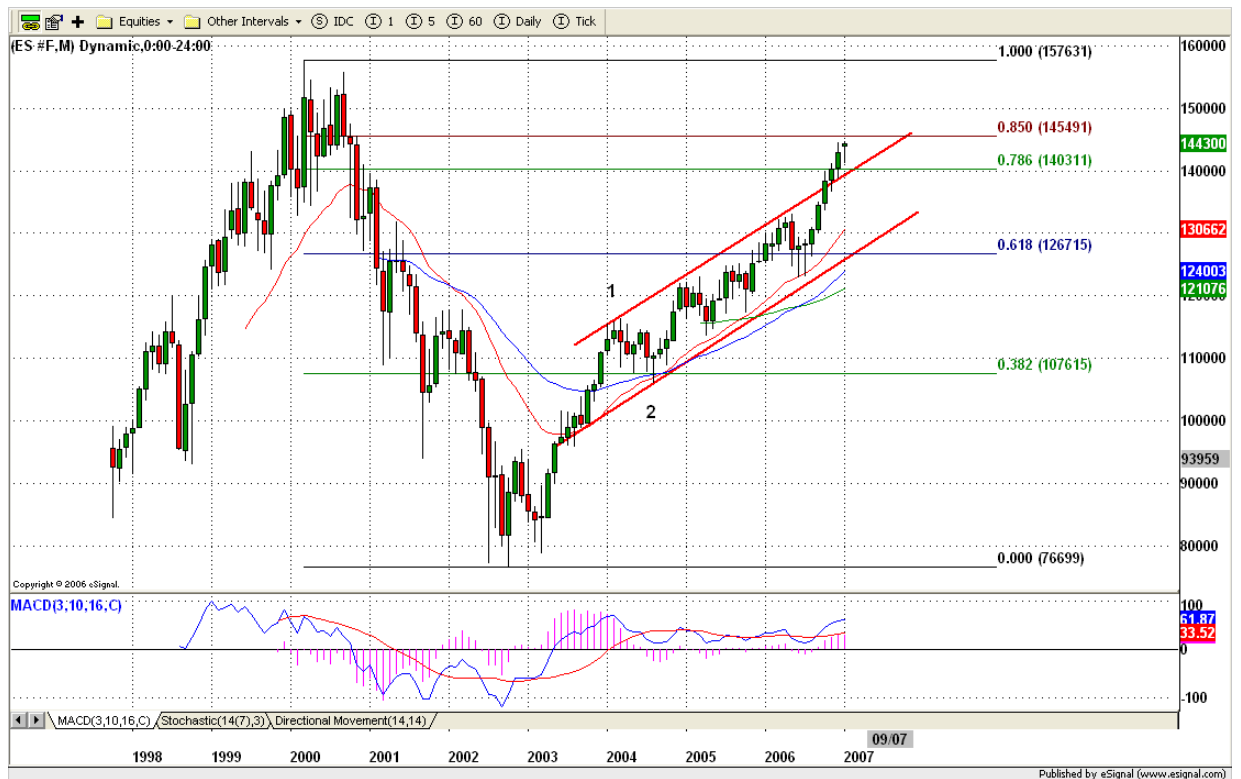
4. MAJOR RESISTANCE AND SUPPORT LEVELS FOR TODAY

Resistance	1456.00	1458.25	1462.25	1464.25	1469.25
Support	1449.75	1445.75	1443.75	1441.75	1437.50

5. MONTHLY AND WEEKLY OUTLOOK

S&P 500 closed at 1438.24 for Jan, a net monthly gain of 19.94 points. In the long-term analysis, S&P 500 still is in the sub-wave 5 of big wave 3 stage. Overall the long-term picture remains bullish.

ES closed at 1443.00 on Jan 31 for a net monthly gain of 14.50 points. Like the cash, the ES monthly chart remains bullish. ES retraced back up to its Nov. 2000 first breakdown range (1453-57) after 6 years (ES made its all time high on March 2000). Whether or not ES can move up to make major double top around 1555 level depends on Feb. monthly closing price. Most important for this month is to see how ES reacts on its 1453-57 range. If breakout this range, it could rally up to 1465 and further up to 1488-90 area. Fail to breakout this range, it is possible for price to travel within 1455-1422 range again until either bulls or bears totally give up. Monthly major resistance level is 1488-95 and major support level is 1422-29.



Let us look at weekly chart (below). In the past weeks, ES had a minor correction move (mainly sideways). Last week, ES broke out that sideways move range and closed above it. That tells us that Bulls remain control of this market. As long as 1445-47 last week breakout level can hold price from falling, this week we could see 1465 or 1477 as soon as ES breaks out 1458-59 range. If ES fails to hold 1445-47 level, it is possible for price to dip down to fill last Thursday's gap around 1443 and retest 1437.75 level. Even weekly chart indicators shows that ES still is in minor correction stage, overall remain bullish. Only one

thing makes me to worry, that is SP100 (OEX) and Nasdaq. Those two were lagging and failed to confirm SP500 and Dow's high made by last Friday.

Major resistance level for this week is 1477 and support level is 1437.



6. DAILY OUTLOOK

ES made another narrow range day with low volume. While the ES showed a little tiredness, it still hasn't made its exhaustion move yet. Today could be a day.

Daily indicators all support up price move. Plus the key support zone also holds price up very well yesterday. Today it is possible for ES to move higher if 1451 level can be held up all morning.

Major resistance level is 1465 and support level is 1448



7. TRADING STRATEGY FOR Feb. 6, 2007

Due to past two days formed by narrow trading range, ES was in contraction move, which we call it consolidation or sideways move. Today we could see a strong trend day. In the early morning, we need to pay attention on 1451 level. If this level can be held up well, upside is more likely to breakout again for price to make a new high. Breakout 1456 level, upside Momentum could pick up and push price higher to 1460.75 (Short level) or higher to 1465-67 range (Second short level) if ES has a very strong move in first 15 min. Breakdown 1448.00 level confirmed by seeing 1446.50, downside Momentum could pick up and push price down to 1441.75 (Long level).

Intraday swing position entry on short side:
1459.25-60.75 (agg) and 1465.50-67.25 (cons)
Intraday swing position entry on long side:
1447.50 (Agg.Scalp) 1441.75 (agg) and 1437.75 (cons)



8. PREDICTION FOR TODAY'S MOVEMENT

Current (interval=0.95)

1455.08	+2/8
1454.10	+1/8
1453.13	8/8
1452.15	7/8
1451.17	6/8
1450.20	5/8
1449.22	4/8
1448.24	3/8
1447.27	2/8
1446.29	1/8
1445.31	0/8
1444.34	-1/8
1443.36	-2/8

Up (Interval=1.95)

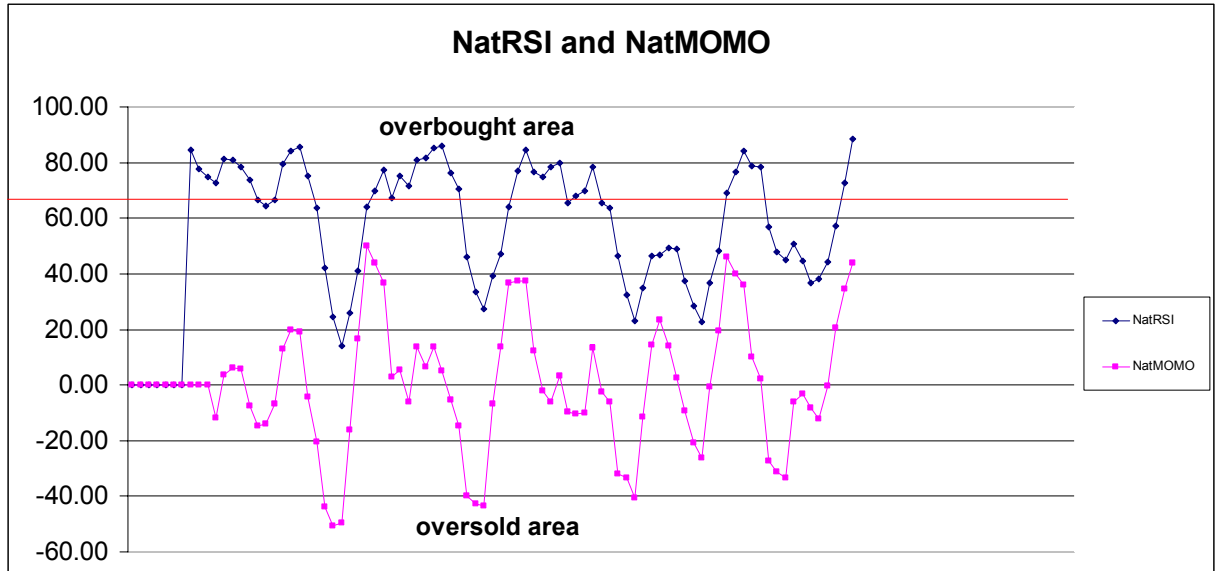
1472.66	+2/8
1470.70	+1/8
1468.75	8/8
1466.80	7/8
1464.84	6/8
1462.89	5/8
1460.94	4/8
1458.98	3/8
1457.03	2/8
1455.08	1/8
1453.13	0/8
1451.17	-1/8
1449.22	-2/8

Down (Interval=1.95)

1464.84	+2/8
1462.89	+1/8
1460.94	8/8
1458.98	7/8
1457.03	6/8
1455.08	5/8
1453.13	4/8
1451.17	3/8
1449.22	2/8
1447.27	1/8
1445.31	0/8
1443.36	-1/8
1441.41	-2/8

9. OTHER INDICATORS

NatRSI (1day)	NatRSI (5day)	NatMoMo	ATR 10	Waist number
0.66	0.89	+44.08	10.43	1452.75
neutral	overbought			



10. Weekly Economic Reports (<http://www.tradethenews.com/weekly-calendar.php>)

Projected Economic Releases for This Week

(Consensus Forecasts vs. Previous Report)

Feb 7

Productivity-Prel	8:30	Q4	1.7% vs 0.2%
Crude Inventories	10:30	02/02	NA vs 2684K
Consumer Credit	15:00	Dec	\$6.5B vs \$12.3B

Feb 8

Initial Claims	8:30	02/03	NA vs 307K
Wholesale Inventories	10:00	Dec	0.6% vs 1.3%