

Naturus



Daily trading plan for Nov. 1, 2006

1. ESZ6 IN PREVIOUS DAY

Open	High	Low	Closing
1385.25	1387.25	1377.00	1383.25

2. PIVOTS FOR ESZ6

	Daily	Weekly	Monthly	Yearly
R3	1398.25	1421.92	1466.25	1425.83
R2	1392.75	1408.58	1430.75	1355.42
R1	1388.00	1396.67	1407.00	1305.08
PPT	1382.50	1383.33	1371.50	1234.67
S1	1377.75	1371.42	1347.75	1184.33
S2	1372.25	1358.08	1312.25	1113.92
S3	1367.50	1346.17	1288.50	1063.58

3. FOCUS NUMBERS (intra-day Position trading)

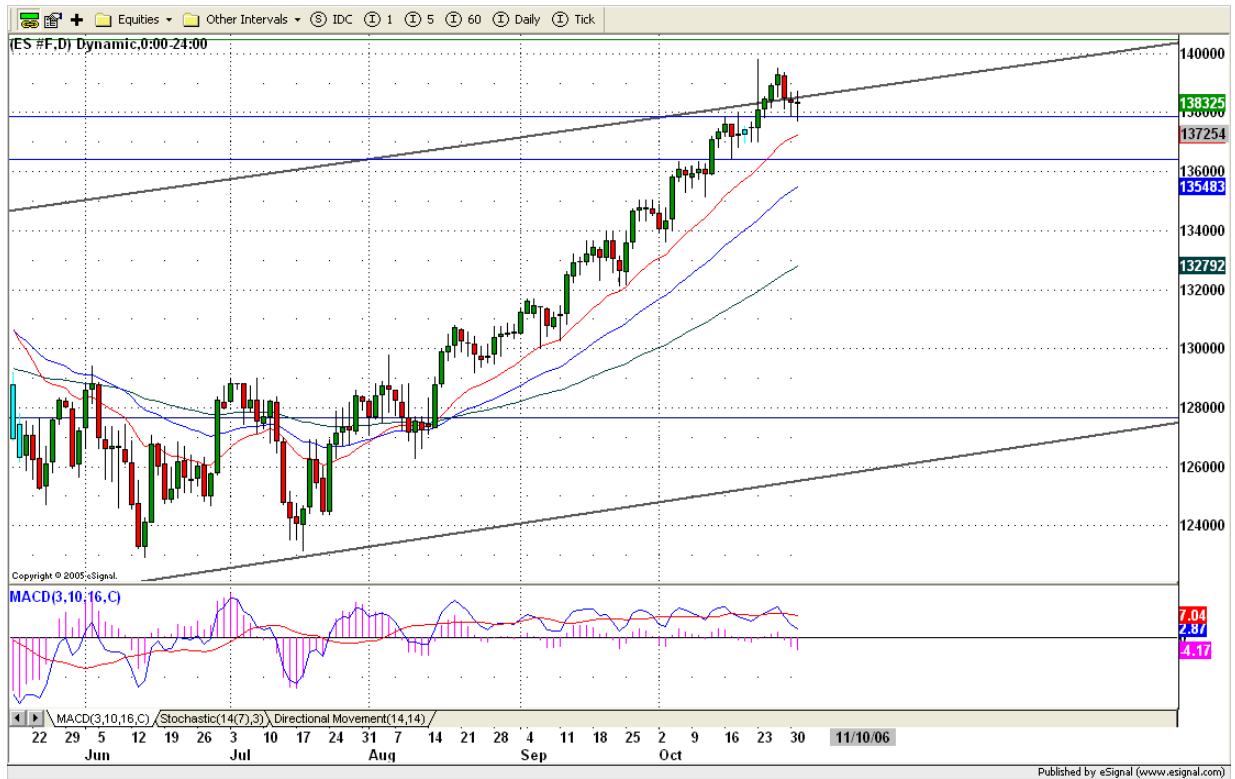
Sell levels	Buying levels
1394.25 (First Sell#)	1377.25 (First Buy#)
1398.25 (Second Sell#)	1373.25 (second Buy#)

4. MAJOR RESISTANCE AND SUPPORT LEVELS FOR TODAY

Resistance	1388.25	1392.75	1396.75	1398.25	1406.75
Support	1380.25	1377.25	1373.25	1371.50	1367.50

5. COMMENTARY

Yesterday ES slightly broke down 1378 level, but it managed to close above it without any change from its previous day's closing. ES still struggled with the top band of uptrend channel all day yesterday. Because yesterday was last day of October, it is hard to say that ES has found its bottom. Today we need to see ES breakout upside to reach 1400 level to confirm that yesterday's low is 18-day cycle's low. Otherwise, ES has a chance to go down to make lower low until it finds a true support level.



6. TODAY'S TRADING

Yesterday ES made a low in the lunch session, and bounced up from it. But it still couldn't breakout 1386.50 level. Based on 60 min chart, ES is in a H&S pattern with neckline around 1378 level. Today, it is possible for price to move high first if ES breaks out 1388.25 level. If this happens, H&S pattern will be breached, which will lead upside momentum to pick up and to push price higher to 1390.50 or higher to 1393/1394 range. If ES stays below 1386.50 level, we may see ES dips back down to low band of this downtrend channel.



Caution:

We are in election period. Many charting patterns and indicators suggest the market is on its top, but political considerations may limit any decline. Be cautious in the pre-election period. Normal trading methods may not work.

7. PREDICTION FOR TODAY'S MOVEMENT

Current (interval=0.95)

1388.67	+2/8
1387.70	+1/8
1386.72	8/8
1385.74	7/8
1384.77	6/8
1383.79	5/8
1382.81	4/8
1381.84	3/8
1380.86	2/8
1379.88	1/8
1378.91	0/8
1377.93	-1/8
1376.95	-2/8

Up (Interval=1.95)

1402.34	+2/8
1400.39	+1/8
1398.44	8/8
1396.48	7/8
1394.53	6/8
1392.58	5/8
1390.63	4/8
1388.67	3/8
1386.72	2/8
1384.77	1/8
1382.81	0/8
1380.86	-1/8
1378.91	-2/8

Down (Interval=1.95)

1394.53	+2/8
1392.58	+1/8
1390.63	8/8
1388.67	7/8
1386.72	6/8
1384.77	5/8
1382.81	4/8
1380.86	3/8
1378.91	2/8
1376.95	1/8
1375.00	0/8
1373.05	-1/8
1371.09	-2/8

Copyright 2006 by Natusur Inc. All rights are reserved. Photocopying and further distribution of this newsletter are strictly prohibited. Information, opinion, research, and commentary contained herein is obtained from sources believed to be reliable; their reliability, however, cannot be guaranteed. The maxim of Caveat Emptor applies – let the buyer beware! This newsletter is for education purpose only. It doesn't provide individual investment advice, or act as an investment advisor, or individually advocate the purchase or sale of any security or investment. In making any investment decision, you will rely solely on your own review and examination of the facts and the records relating to such investments. Past performance of our recommendations is not an indication of future performance. We shall have no liability of whatever nature in respect of any claim, damages, loss or expense arising out of or in connection with the reliance by you on the contents of our newsletter, any promotion, published material, alert or update.

8. OTHER INDICATORS

NatRSI (1day)	NatRSI (5day)	NatMoMo	ATR 10	Waist number
0.40	0.63	-20.62	8.23	1384.25
neutral	overbought			

9. WEEKLY ECONOMIC CALENDAR

Projected Economic Releases for This Week				
(Consensus Forecasts vs. Previous Report)				
Nov 1				
Auto Sales		12:00	Oct	5.3M vs 5.3M
Truck Sales		12:00	Oct	7.6M vs 7.6M
Construction Spending		10:00	Sep	0.0% vs 0.3%
ISM Index		10:00	Oct	53.1 vs 52.9
Crude Inventories		10:30	10/27	NA vs -3205K
Nov 2				
Initial Claims		8:30	10/28	NA vs 308K
Productivity-Prel		8:30	Q3	1.5% vs 1.6%
Factory Orders		10:00	Sep	3.0% vs 0.0%
Nov 3				
Nonfarm Payrolls		8:30	Oct	125K vs 51K
Unemployment Rate		8:30	Oct	4.6% vs 4.6%
Hourly Earnings		8:30	Oct	0.3% vs 0.2%
Average Workweek		8:30	Oct	33.8 vs 33.8
ISM Services		10:00	Oct	54.5 vs 52.9