

Naturus



Daily trading plan for Oct. 31, 2006

1. ESZ6 IN PREVIOUS DAY

Open	High	Low	Closing
1381.25	1387.00	1378.75	1383.00

2. PIVOTS FOR ESZ6

	Daily	Weekly	Monthly	Yearly
R3	1395.50	1421.92	1411.17	1425.83
R2	1391.50	1408.58	1380.83	1355.42
R1	1387.25	1396.67	1363.17	1305.08
PPT	1383.00	1383.33	1332.83	1234.67
S1	1379.00	1371.42	1315.17	1184.33
S2	1374.75	1358.06	1284.83	1113.92
S3	1370.75	1346.17	1267.17	1063.58

3. FOCUS NUMBERS (intra-day Position trading)

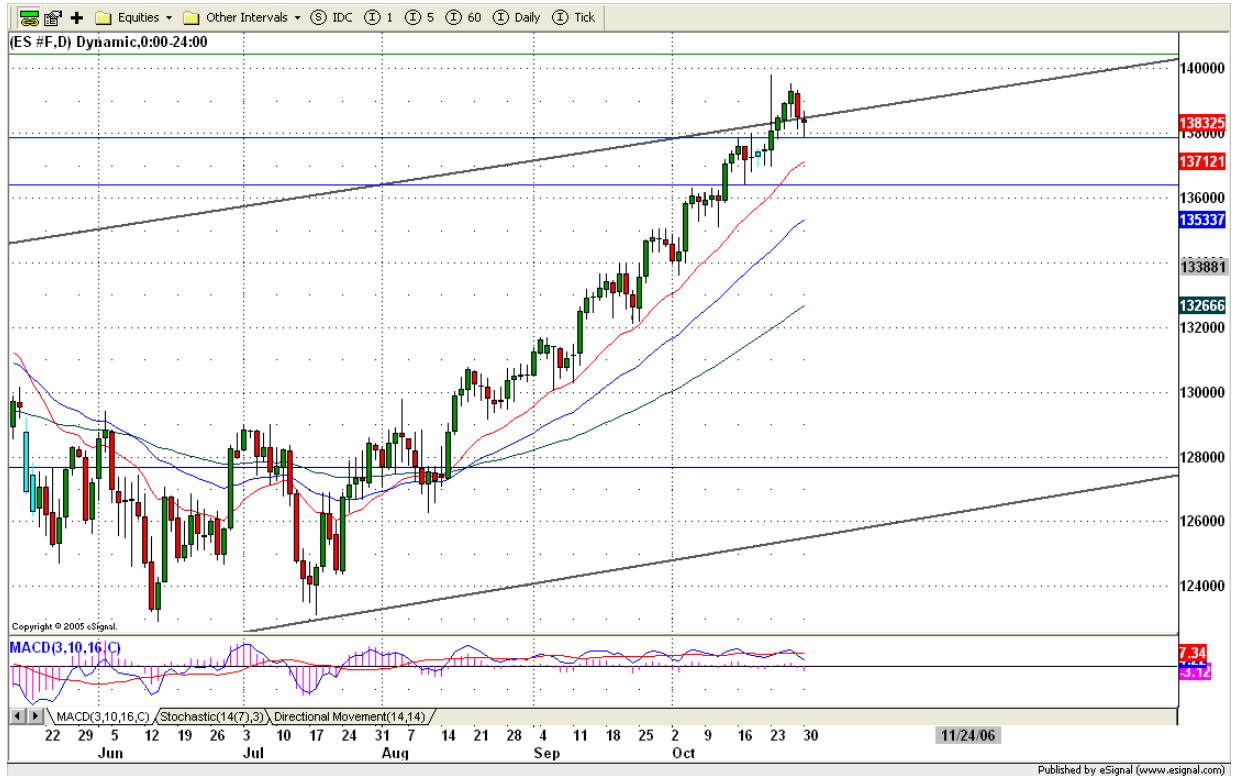
Sell levels	Buying levels
1388.75 (First Sell#)	1375.25 (First Buy#)
1393.50 (Second Sell#)	1371.50 (second Buy#)

4. MAJOR RESISTANCE AND SUPPORT LEVELS FOR TODAY

Resistance	1387.25	1389.25	1391.25	1393.25	1395.50
Support	1379.00	1374.75	1371.50	1368.00	1363.25

5. COMMENTARY

Yesterday ES slightly broke 1381 level, but it managed to close above it. ES struggled with the top band of uptrend channel all day yesterday. Upside strength seems to have deteriorated a lot. Today any breakdown 1378 level will lead to price dip into next major support level 1371/1370 range.



6. TODAY'S TRADING

Yesterday ES made a low first in the morning session, and bounced up from early lows, but it could breakout 1386.50 level. Before market closing, it turned back down again. Based on 60 min chart, ES formed a H&S pattern with neckline around 1378 level. Today, it is possible for price to retest yesterday's low if ES can't breakout from the 1386.50 level. Breakdown 1378 level, it is likely for price to go down further to 1371/1370.



Caution:

We are in election period. Many charting patterns and indicators suggest the market is on its top, but political considerations may limit any decline. Be cautious in the pre-election period. Normal trading methods may not work.

7. PREDICTION FOR TODAY'S MOVEMENT

Current (interval=0.95)

1388.67	+2/8
1387.70	+1/8
1386.72	8/8
1385.74	7/8
1384.77	6/8
1383.79	5/8
1382.81	4/8
1381.84	3/8
1380.86	2/8
1379.88	1/8
1378.91	0/8
1377.93	-1/8
1376.95	-2/8

Up (Interval=1.95)

1394.53	+2/8
1392.58	+1/8
1390.63	8/8
1388.67	7/8
1386.72	6/8
1384.77	5/8
1382.81	4/8
1380.86	3/8
1378.91	2/8
1376.95	1/8
1375.00	0/8
1373.05	-1/8
1371.09	-2/8

Down (Interval=1.95)

1394.53	+2/8
1392.58	+1/8
1390.63	8/8
1388.67	7/8
1386.72	6/8
1384.77	5/8
1382.81	4/8
1380.86	3/8
1378.91	2/8
1376.95	1/8
1375.00	0/8
1373.05	-1/8
1371.09	-2/8

Copyright 2006 by Natusur Inc. All rights are reserved. Photocopying and further distribution of this newsletter are strictly prohibited. Information, opinion, research, and commentary contained herein is obtained from sources believed to be reliable; their reliability, however, cannot be guaranteed. The maxim of Caveat Emptor applies – let the buyer beware! This newsletter is for education purpose only. It doesn't provide individual investment advice, or act as an investment advisor, or individually advocate the purchase or sale of any security or investment. In making any investment decision, you will rely solely on your own review and examination of the facts and the records relating to such investments. Past performance of our recommendations is not an indication of future performance. We shall have no liability of whatever nature in respect of any claim, damages, loss or expense arising out of or in connection with the reliance by you on the contents of our newsletter, any promotion, published material, alert or update.

8. OTHER INDICATORS

NatRSI (1day)	NatRSI (5day)	NatMoMo	ATR 10	Waist number
0.62	0.75	-4.33	7.20	1383.25
neutral	overbought			

9. WEEKLY ECONOMIC CALENDAR

Projected Economic Releases for This Week				
(Consensus Forecasts vs. Previous Report)				
Oct 31				
Employment Cost Index		8:30	Q3	0.9% vs 0.9%
Chicago PMI		10:00	Oct	58.0 vs 62.1
Consumer Confidence		10:00	Oct	108.0 vs 104.5
Nov 1				
Auto Sales		12:00	Oct	5.3M vs 5.3M
Truck Sales		12:00	Oct	7.6M vs 7.6M
Construction Spending		10:00	Sep	0.0% vs 0.3%
ISM Index		10:00	Oct	53.1 vs 52.9
Crude Inventories		10:30	10/27	NA vs -3205K
Nov 2				
Initial Claims		8:30	10/28	NA vs 308K
Productivity-Prel		8:30	Q3	1.5% vs 1.6%
Factory Orders		10:00	Sep	3.0% vs 0.0%
Nov 3				
Nonfarm Payrolls		8:30	Oct	125K vs 51K
Unemployment Rate		8:30	Oct	4.6% vs 4.6%
Hourly Earnings		8:30	Oct	0.3% vs 0.2%
Average Workweek		8:30	Oct	33.8 vs 33.8
ISM Services		10:00	Oct	54.5 vs 52.9