

Naturus



Daily trading plan for Oct. 24, 2006

1. ESZ6 IN PREVIOUS DAY

Open	High	Low	Closing
1371.50	1384.50	1370.00	1380.75

2. PIVOTS FOR ESZ6

	Daily	Weekly	Monthly	Yearly
R3	1401.33	1398.42	1411.17	1425.83
R2	1392.92	1389.33	1380.83	1355.42
R1	1386.83	1382.17	1363.17	1305.08
PPT	1378.42	1373.08	1332.83	1234.67
S1	1372.33	1365.92	1315.17	1184.33
S2	1363.92	1356.83	1284.83	1113.92
S3	1357.83	1349.67	1267.17	1063.58

3. FOCUS NUMBERS (intra-day Position trading)

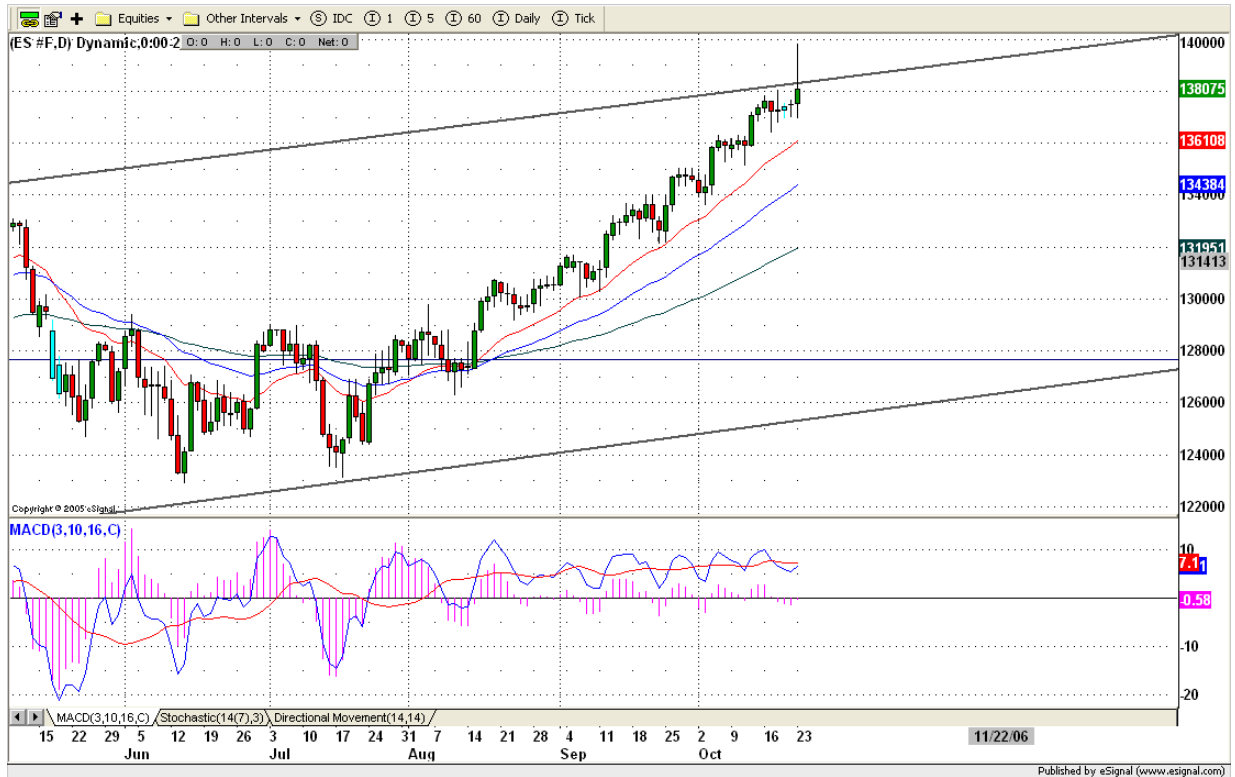
Sell levels	Buying levels
1382.25 (First Sell#)	1375.25 (First Buy#)
1390.50 (Second Sell#)	1370.75 (second Buy#)

4. MAJOR RESISTANCE AND SUPPORT LEVELS FOR TODAY

Resistance	1380.75	1383.75	1387.00	1389.75	1395.25
Support	1375.75	1372.25	1367.50	1363.75	1356.25

5. COMMENTARY

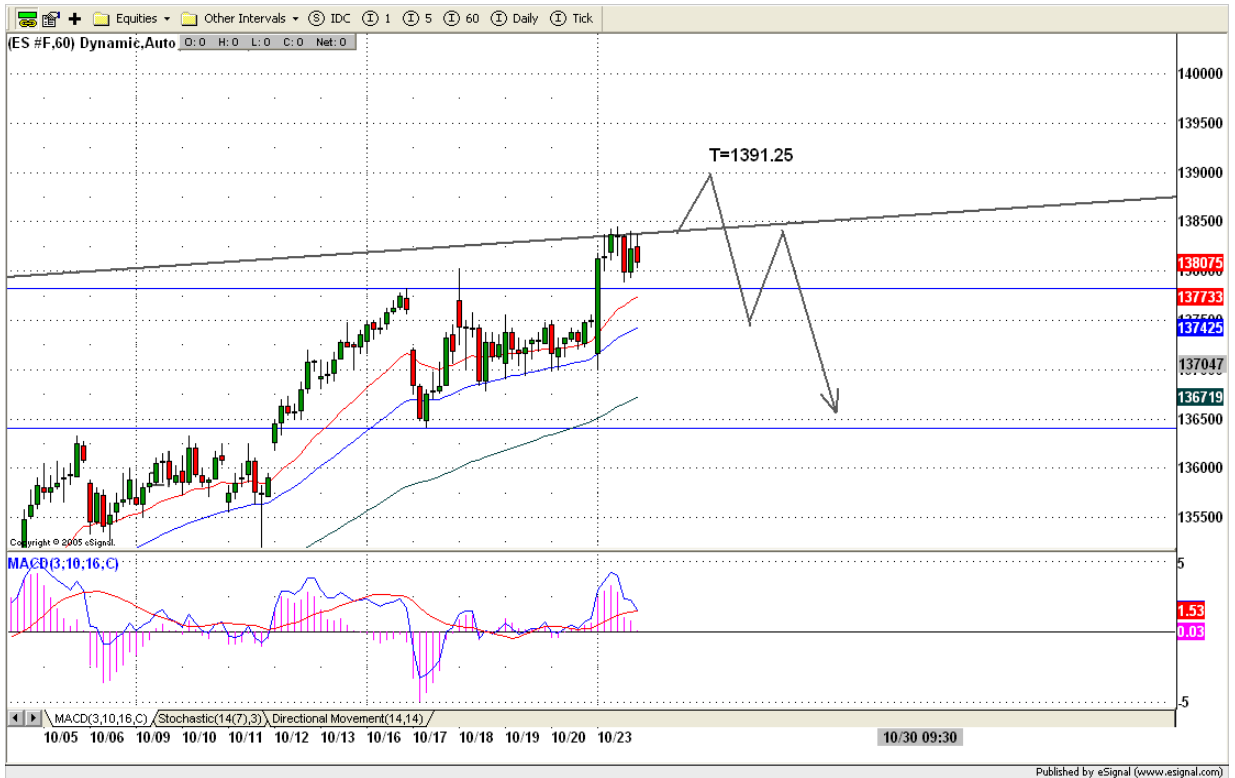
Even ES made a new high to 1384.50, unfortunately it still closed below the top-line of uptrend channel. Based on daily indicators, ES still has its energy to push the price higher. Due to tomorrow FOMC announcement, we may see a sideways movement today to wait for Fed. If ES can breakout 1385 to make a new high today, today's high should be the high for the week. Tomorrow to the end of this week should be pullback days.



6. TODAY'S TRADING

Based on 60 mins chart, ES broke out 1275.50 level and pushed price up to 1384.50 level, but at the end of day, it could hold its full gain.

Today ES could move up again for testing 1382-1384 range in the early morning if it can hold up 1378 level in the pre-market. Alternatively we may see ES go down to test 1375 level if it can't hold above 1378 in the morning. Later ES may run up higher to 1391 level if it can breakout 1385. If ES does that, 1391 should be this week's high.



Caution:

We are in election period. Many charting patterns and indicators suggest the market is on its top, but political considerations may limit any decline. Be cautious in the pre-election period. Normal trading methods may not work.

7. PREDICTION FOR TODAY'S MOVEMENT

Current (interval=0.95)

1376.95	+2/8
1375.98	+1/8
1375.00	8/8
1374.02	7/8
1373.05	6/8
1372.07	5/8
1371.09	4/8
1370.12	3/8
1369.14	2/8
1368.16	1/8
1367.19	0/8
1366.21	-1/8
1365.23	-2/8

Up (Interval=0.95)

1384.77	+2/8
1383.79	+1/8
1382.81	8/8
1381.84	7/8
1380.86	6/8
1379.88	5/8
1378.91	4/8
1377.93	3/8
1376.95	2/8
1375.98	1/8
1375.00	0/8
1374.02	-1/8
1373.05	-2/8

Down (Interval=1.95)

1378.91	+2/8
1376.95	+1/8
1375.00	8/8
1373.05	7/8
1371.09	6/8
1369.14	5/8
1367.19	4/8
1365.23	3/8
1363.28	2/8
1361.33	1/8
1359.38	0/8
1357.42	-1/8
1355.47	-2/8

Copyright 2006 by Natusur Inc. All rights are reserved. Photocopying and further distribution of this newsletter are strictly prohibited. Information, opinion, research, and commentary contained herein is obtained from sources believed to be reliable; their reliability, however, cannot be guaranteed. The maxim of Caveat Emptor applies – let the buyer beware! This newsletter is for education purpose only. It doesn't provide individual investment advice, or act as an investment advisor, or individually advocate the purchase or sale of any security or investment. In making any investment decision, you will rely solely on your own review and examination of the facts and the records relating to such investments. Past performance of our recommendations is not an indication of future performance. We shall have no liability of whatever nature in respect of any claim, damages, loss or expense arising out of or in connection with the reliance by you on the contents of our newsletter, any promotion, published material, alert or update.

8. OTHER INDICATORS

NatRSI (1day)	NatRSI (5day)	NatMoMo	ATR 10	Waist number
0.82	0.64	-13.88	7.35	1376.13
overbought	neutral			

9. WEEKLY ECONOMIC CALENDAR

Projected Economic Releases for This Week

(Consensus Forecasts vs. Previous Report)

Oct 25

Existing Home Sales	10:00	Sep	6.25M vs 6.30M
Crude Inventories	10:30	10/20	NA vs 5020K
FOMC policy statement	14:15		

Oct 26

Durable Orders	8:30	Sep	1.0% vs 0.0%
Initial Claims	8:30	10/21	NA vs 299K
Help-Wanted Index	10:00	Sep	31 vs 31
New Home Sales	10:00	Sep	1050K vs 1050K

Oct 27

Chain Deflator-Adv.	8:30	Q3	2.9% vs 3.3%
GDP-Adv.	8:30	Q3	2.2% vs 2.6%
Chain Deflator-Adv.	8:30	Q3	2.9% vs 3.3%
Mich Sentiment-Rev.	9:50	Oct	92.5 vs 92.3