

Naturus



Daily trading plan for Oct. 23, 2006

1. ESZ6 IN PREVIOUS DAY

Open	High	Low	Closing
1374.75	1375.50	1369.75	1375.00

2. PIVOTS FOR ESZ6

	Daily	Weekly	Monthly	Yearly
R3	1382.83	1398.42	1411.17	1425.83
R2	1379.17	1389.33	1380.83	1355.42
R1	1377.08	1382.17	1363.17	1305.08
PPT	1373.45	1373.08	1332.83	1234.67
S1	1371.33	1365.92	1315.17	1184.33
S2	1367.67	1356.83	1284.83	1113.92
S3	1365.58	1349.67	1267.17	1063.58

3. FOCUS NUMBERS (intra-day Position trading)

Sell levels	Buying levels
1381.25 (First Sell#)	1364.25 (First Buy#)
1389.25 (Second Sell#)	1358.75 (second Buy#)

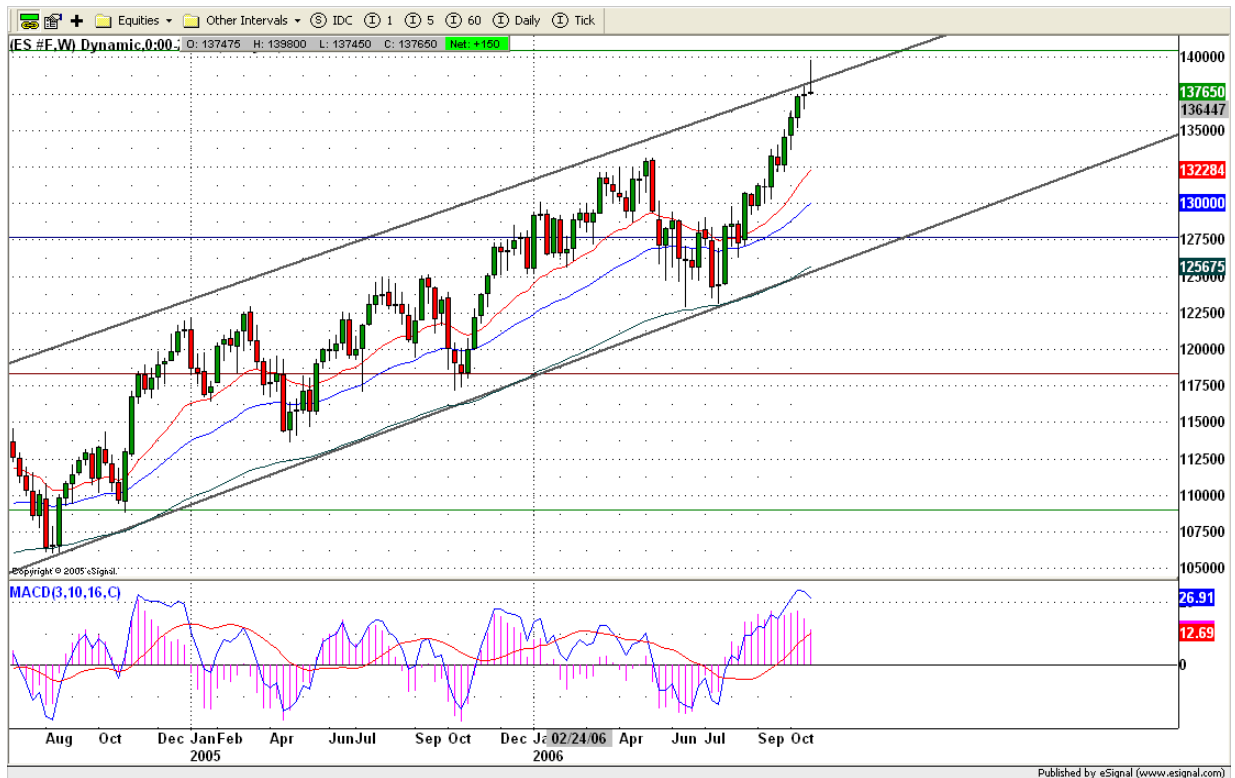
4. MAJOR RESISTANCE AND SUPPORT LEVELS FOR TODAY

Resistance	1378.00	1381.25	1384.25	1386.75	1398.75
Support	1372.25	1366.00	1363.25	1358.75	1356.25

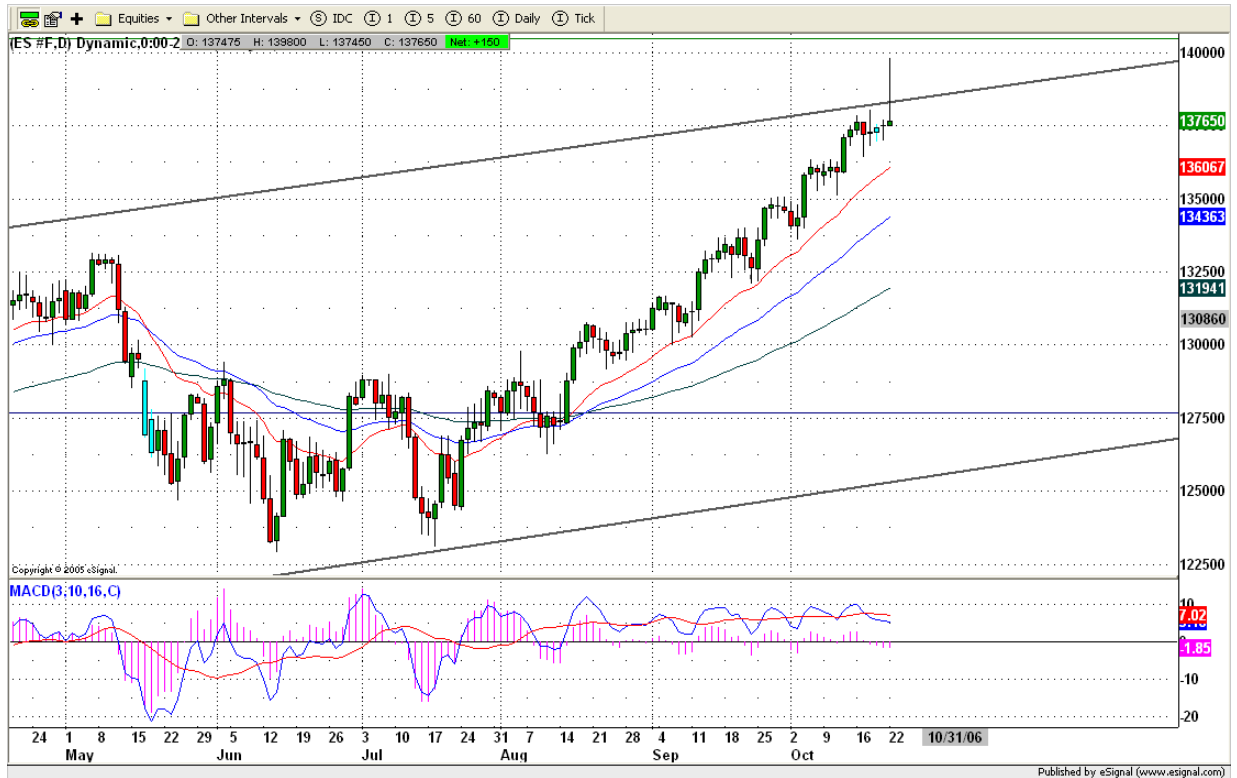
5. COMMENTARY

Last week the Dow and S&P 500 made new highs and remain short term bullish. However last several days, S&P 500 traded below its peak of Oct. 16. In the past weeks, the Broker-Dealer sector had a tendency to lead S&P 500, but not last week. So we will see how it turns out this week.

ES is on super-overbought; volume started to drop while price kept going high. It is in process of forming sell divergence. Price pullback into its 20 week moving average line area should be expected in the coming weeks.



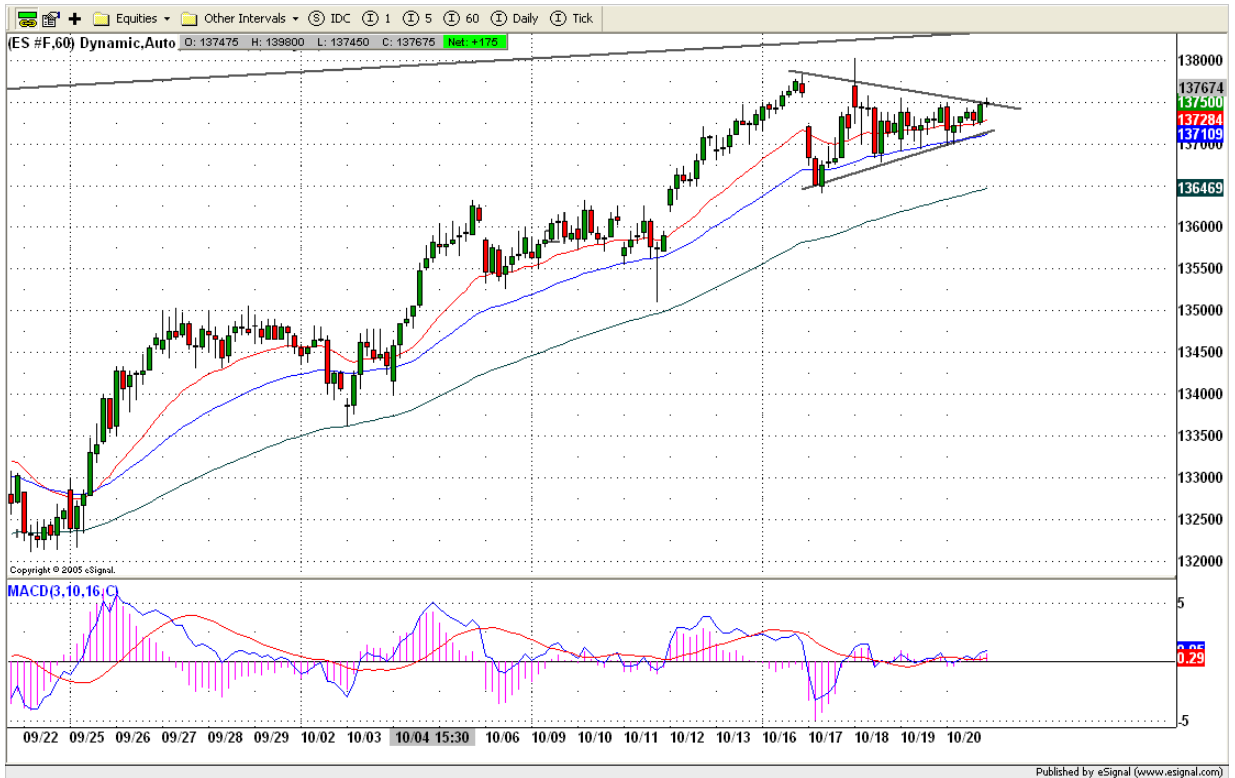
ES repeated its dome-top pattern last week. It had been struggling with 1375 level for last three days. Today we may see last push up before price drops sharply. ES may test last week's high around 1381 or 1384.25 level before it goes down to 1365. If ES breaks out 1386 level, it is likely for price to go higher to 1389/1393 range.



6. TODAY'S TRADING

Based on 60 mins chart, ES closed right on its top of a triangle pattern. The upside momentum could push price into 1378.75-1379.50 range or higher to 1382-1384 range if ES breakout 1275.50 level. But if ES breakdown 1369.75, price could dip into 1365.50 or lower to 1362.50/63 range.

Breaking out the long term top band of uptrend channel could lead upside momentum to push price higher to 1400 area, but price also could drop from that area sharply.



Caution:

We are in election period. Many charting patterns and indicators suggest the market is on its top, but political considerations may limit any decline. Be cautious in the pre-election period. Normal trading methods may not work.

7. PREDICTION FOR TODAY'S MOVEMENT

Current (interval=0.95)

1376.95	+2/8
1375.98	+1/8
1375.00	8/8
1374.02	7/8
1373.05	6/8
1372.07	5/8
1371.09	4/8
1370.12	3/8
1369.14	2/8
1368.16	1/8
1367.19	0/8
1366.21	-1/8
1365.23	-2/8

Up (Interval=0.95)

1384.77	+2/8
1383.79	+1/8
1382.81	8/8
1381.84	7/8
1380.86	6/8
1379.88	5/8
1378.91	4/8
1377.93	3/8
1376.95	2/8
1375.98	1/8
1375.00	0/8
1374.02	-1/8
1373.05	-2/8

Down (Interval=1.95)

1378.91	+2/8
1376.95	+1/8
1375.00	8/8
1373.05	7/8
1371.09	6/8
1369.14	5/8
1367.19	4/8
1365.23	3/8
1363.28	2/8
1361.33	1/8
1359.38	0/8
1357.42	-1/8
1355.47	-2/8

Copyright 2006 by Natusur Inc. All rights are reserved. Photocopying and further distribution of this newsletter are strictly prohibited. Information, opinion, research, and commentary contained herein is obtained from sources believed to be reliable; their reliability, however, cannot be guaranteed. The maxim of Caveat Emptor applies – let the buyer beware! This newsletter is for education purpose only. It doesn't provide individual investment advice, or act as an investment advisor, or individually advocate the purchase or sale of any security or investment. In making any investment decision, you will rely solely on your own review and examination of the facts and the records relating to such investments. Past performance of our recommendations is not an indication of future performance. We shall have no liability of whatever nature in respect of any claim, damages, loss or expense arising out of or in connection with the reliance by you on the contents of our newsletter, any promotion, published material, alert or update.

8. OTHER INDICATORS

NatRSI (1day)	NatRSI (5day)	NatMoMo	ATR 10	Waist number
0.52	0.74	-14.55	7.05	1374.88
neutral	overbought			

9. WEEKLY ECONOMIC CALENDAR

Projected Economic Releases for This Week

(Consensus Forecasts vs. Previous Report)

Oct 25

Existing Home Sales	10:00	Sep	6.25M vs 6.30M
Crude Inventories	10:30	10/20	NA vs 5020K
FOMC policy statement	14:15		

Oct 26

Durable Orders	8:30	Sep	1.0% vs 0.0%
Initial Claims	8:30	10/21	NA vs 299K
Help-Wanted Index	10:00	Sep	31 vs 31
New Home Sales	10:00	Sep	1050K vs 1050K

Oct 27

Chain Deflator-Adv.	8:30	Q3	2.9% vs 3.3%
GDP-Adv.	8:30	Q3	2.2% vs 2.6%
Chain Deflator-Adv.	8:30	Q3	2.9% vs 3.3%
Mich Sentiment-Rev.	9:50	Oct	92.5 vs 92.3