

Naturus



Daily trading plan for Oct. 18, 2006

1. ESZ6 IN PREVIOUS DAY

Open	High	Low	Closing
1372.00	1374.50	1364.00	1371.75

2. PIVOTS FOR ESZ6

	Daily	Weekly	Monthly	Yearly
R3	1386.17	1405.00	1411.17	1425.83
R2	1380.58	1390.17	1380.83	1355.42
R1	1376.17	1381.83	1363.17	1305.08
PPT	1370.08	1366.42	1332.83	1234.67
S1	1365.67	1358.08	1315.17	1184.33
S2	1359.58	1342.67	1284.83	1113.92
S3	1355.17	1334.33	1267.17	1063.58

3. FOCUS NUMBERS (intra-day Position trading)

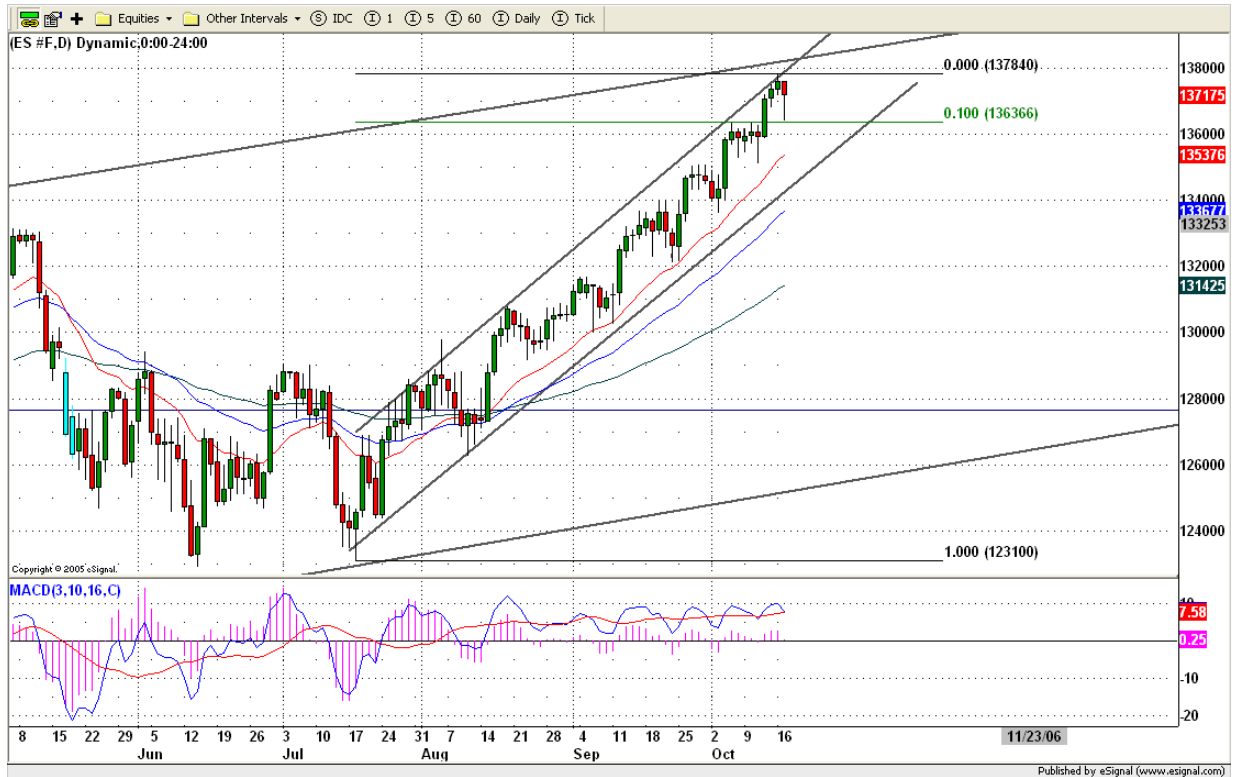
Sell levels	Buying levels
1379.25 (First Sell#)	1363.50 (First Buy#)
1385.25 (Second Sell#)	1358.50 (second Buy#)

4. MAJOR RESISTANCE AND SUPPORT LEVELS FOR TODAY

Resistance	1377.25	1380.75	1382.75	1389.25	1396.50
Support	1369.25	1365.25	1363.25	1358.75	1353.25

5. COMMENTARY

Yesterday ES made its 10% downside correction from the yearly high level 1378.25. It did manage to close at its top trading range. It made a similar movement on Oct 11, 2006. This kind of movement shows Bulls still in control of this market, and are buying on price dip from the market. This market needs to be held until Nov. 7, 2006. For option expiration week, we may see sideway for three more days.



6. TODAY'S TRADING

Based on 60 mins chart, ES made its 10% correction to test 1364 level, which was the breakout level of its first hour range on Oct.12, 2006. It successfully tested this level and moved back up above its open price. This bullish movement presents two possibilities for today's movement. If 1370.50 level holds the price, it is likely for ES to move up to retest 1379/1380 level; if ES fails to hold 1370.50 level, the price could dip back yesterday's low area again. Today's important economic reports beginning at 8:30 this morning also can influence price movement.



Caution:

We are in election period. Many charting patterns and indicators suggest the market is on its top, but political considerations may limit any decline. Be cautious in the pre-election period. Normal trading methods may not work.

7. PREDICTION FOR TODAY'S MOVEMENT

Current (interval=1.95)

1378.91	+2/8
1376.95	+1/8
1375.00	8/8
1373.05	7/8
1371.09	6/8
1369.14	5/8
1367.19	4/8
1365.23	3/8
1363.28	2/8
1361.33	1/8
1359.38	0/8
1357.42	-1/8
1355.47	-2/8

Up (Interval=1.95)

1394.53	+2/8
1392.58	+1/8
1390.63	8/8
1388.67	7/8
1386.72	6/8
1384.77	5/8
1382.81	4/8
1380.86	3/8
1378.91	2/8
1376.95	1/8
1375.00	0/8
1373.05	-1/8
1371.09	-2/8

Down (Interval=0.95)

1373.05	+2/8
1372.07	+1/8
1371.09	8/8
1370.12	7/8
1369.14	6/8
1368.16	5/8
1367.19	4/8
1366.21	3/8
1365.23	2/8
1364.26	1/8
1363.28	0/8
1362.30	-1/8
1361.33	-2/8

Copyright 2006 by Natusur Inc. All rights are reserved. Photocopying and further distribution of this newsletter are strictly prohibited. Information, opinion, research, and commentary contained herein is obtained from sources believed to be reliable; their reliability, however, cannot be guaranteed. The maxim of Caveat Emptor applies – let the buyer beware! This newsletter is for education purpose only. It doesn't provide individual investment advice, or act as an investment advisor, or individually advocate the purchase or sale of any security or investment. In making any investment decision, you will rely solely on your own review and examination of the facts and the records relating to such investments. Past performance of our recommendations is not an indication of future performance. We shall have no liability of whatever nature in respect of any claim, damages, loss or expense arising out of or in connection with the reliance by you on the contents of our newsletter, any promotion, published material, alert or update.

8. OTHER INDICATORS

NatRSI (1day)	NatRSI (5day)	NatMoMo	ATR 10	Waist number
0.49	0.80	6.09	9.23	1371.88
neutral	overbought			

9. WEEKLY ECONOMIC CALENDAR

Projected Economic Releases for This Week

(Consensus Forecasts vs. Previous Report)

Oct 18

Building Permits	8:30	Sep	1715K vs 1727K
Core CPI	8:30	Sep	0.2% vs 0.2%
CPI	8:30	Sep	-0.3% vs 0.2% -
Housing Starts	8:30	Sep	1650K vs 1665K
Core CPI	8:30	Sep	0.2% vs 0.2%
Housing Starts	8:30	Sep	1650K vs 1665K
Building Permits	8:30	Sep	1715K vs 1727K
Crude Inventories	10:30	10/13	NA vs 2408K

Oct 19

Initial Claims	8:30	10/14	NA vs 308K
Leading Indicators	10:00	Sep	0.3% vs -0.2%
Philadelphia Fed	12:00	Oct	6.5 vs -0.4