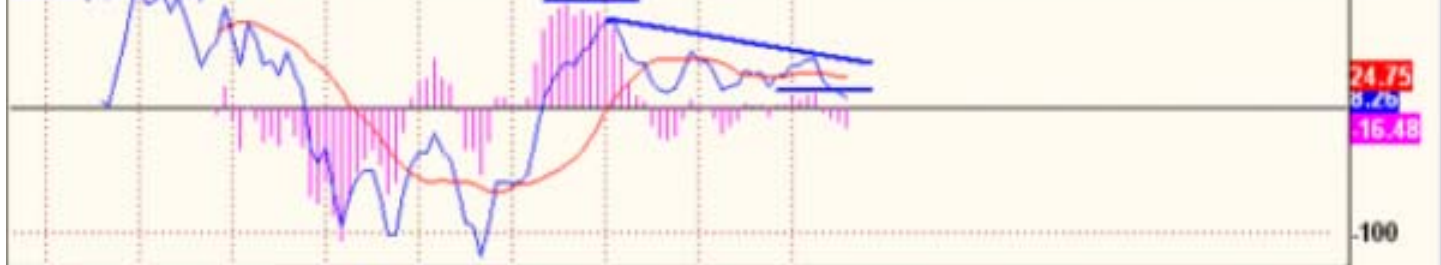


(ES #F - S&P 500 E-mini Futures - Globex,M) Dynamic,0:00-24:00



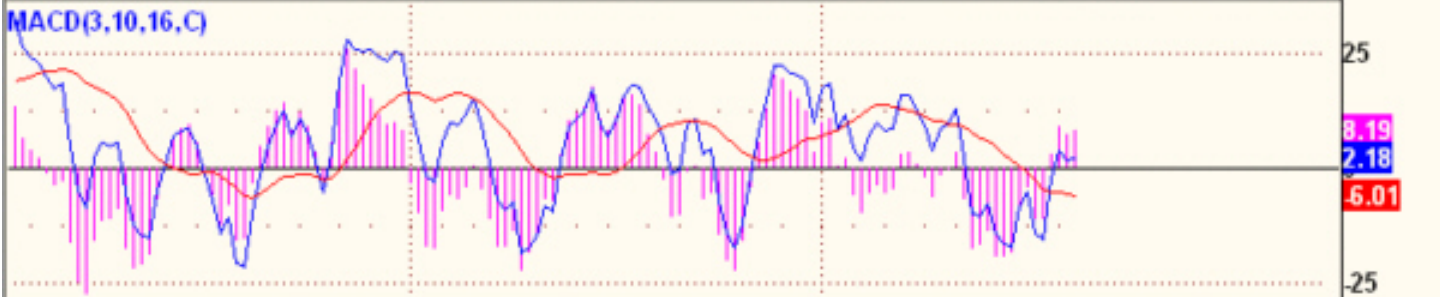
MACD(3,10,16,C)



MACD(3,10,16,C) Stochastic(14(3),3) RSI(5,C) Volume William's % R(7) Directional Movement(14,14)

1998 1999 2000 2001 2002 2003 2004 2005 2006

(ES #F - S&P-500 E-mini Futures - Globex,W) - Dynamic,0:00-24:00



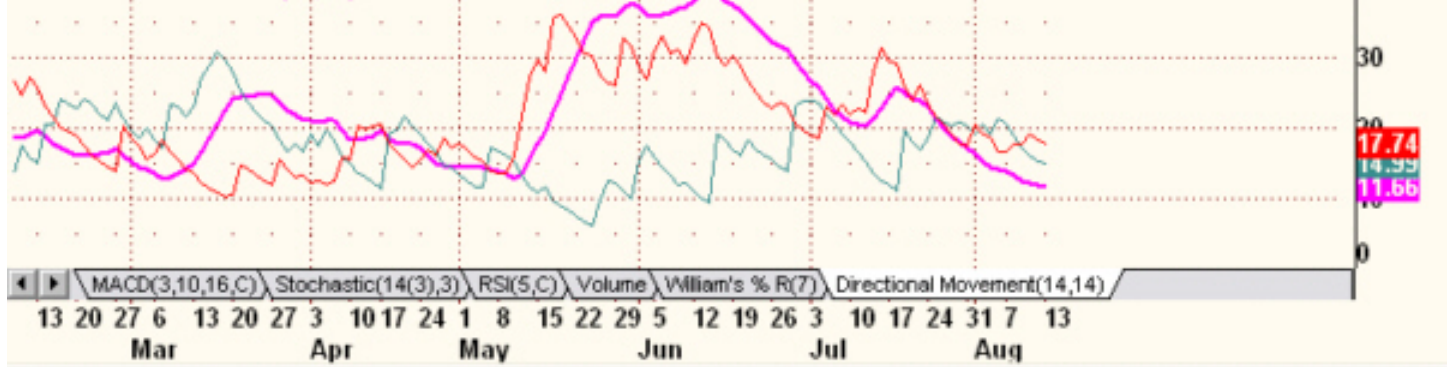
MACD(3,10,16,C) Stochastic(14(3),3) RSI(5,C) Volume William's % R(7) Directional Movement(14,14)

Mar May Jul Sep Nov Jan Mar May Jul Aug Oct Dec Feb Apr Jun Aug  
 2005 2006

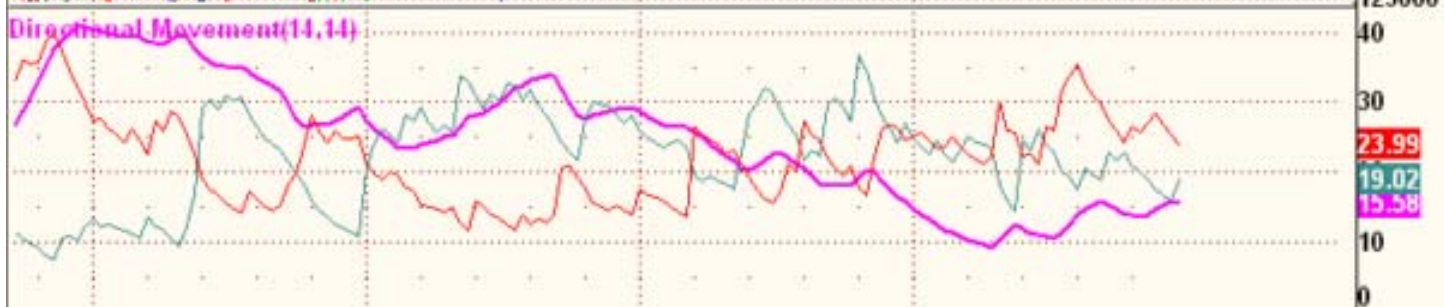
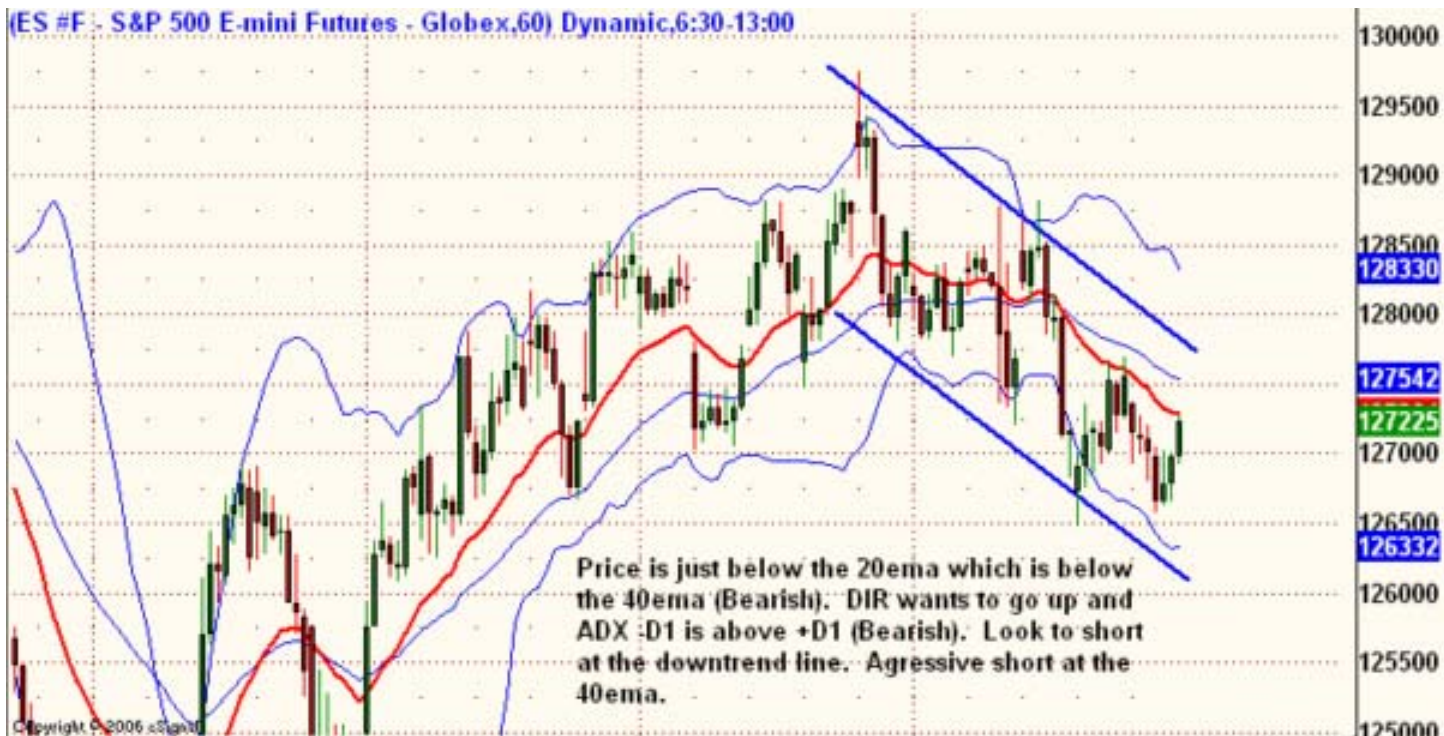
(ES #F - S&P 500 E-mini Futures - Globex,D) Dynamic,0:00-24:00



Directional Movement(14,14)



(ES #F : S&P 500 E-mini Futures - Globex,60) Dynamic,6:30-13:00



MACD(3,10,16,C) Stochastic(14(3),3) RSI(5,C) Volume William's % R(7) Directional Movement(14,14)

07/14 07/18 07/20 07/24 07/26 07/28 08/01 08/03 08/07 08/09 08/11