

Naturus



Daily trading plan for Aug. 24, 2006

1. ESU6 IN PREVIOUS DAY

Open	High	Low	Closing
1301.50	1304.25	1291.50	1297.75

2. PIVOTS FOR ESM6

	Daily	Weekly	Monthly	Yearly
R3	1316.92	1356.58	1362.75	1425.83
R2	1310.58	1332.17	1326.25	1355.42
R1	1304.17	1319.58	1304.00	1305.08
PPT	1297.83	1295.17	1267.50	1234.67
S1	1291.42	1282.58	1245.25	1184.33
S2	1285.08	1258.17	1208.75	1113.92
S3	1278.67	1245.58	1186.50	1063.58

3. FOCUS NUMBERS (intra-day Position trading)

Sell levels	Buying levels
1305.50-1306.50 (First Sell#)	1290.25-1289.00 (First Buy#)
1311.75 (Second Sell#)	1283.75 (second Buy#)

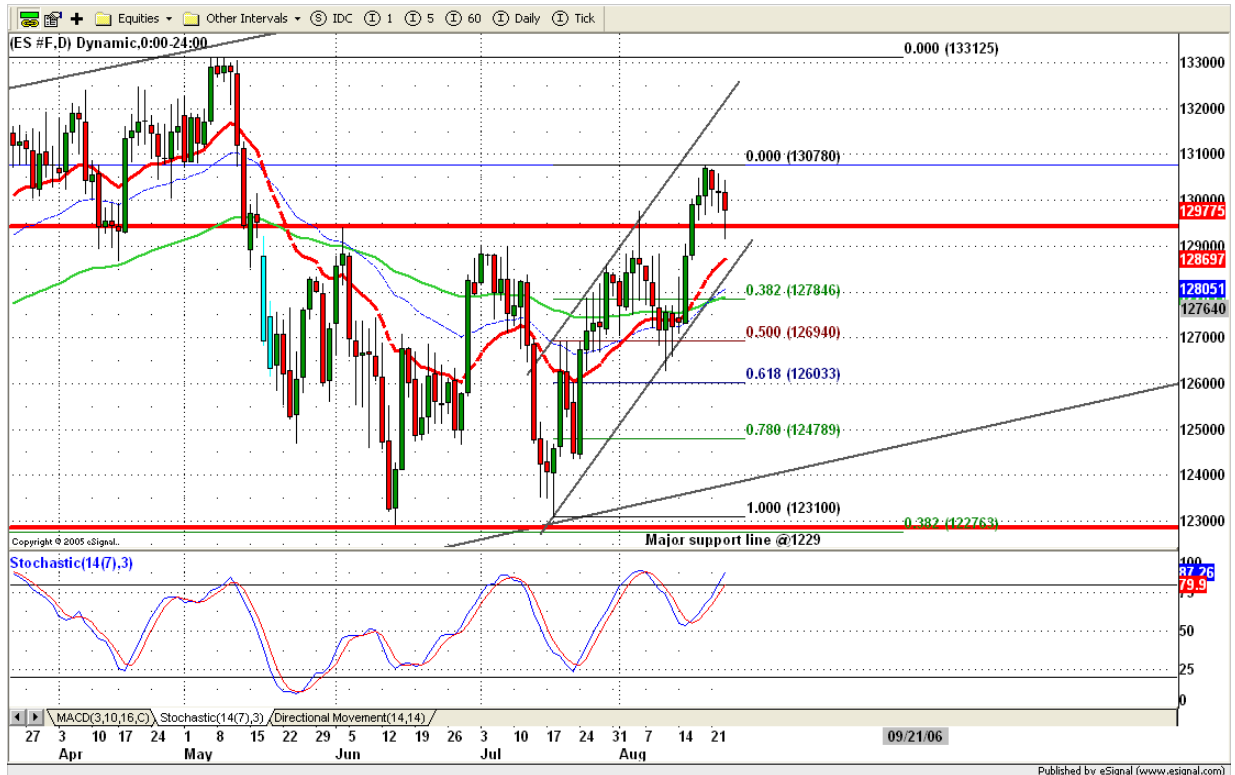
4. MAJOR RESISTANCE AND SUPPORT LEVELS FOR TODAY

Resistance	1304.75	1311.75	1316.75	1319.75	1326.25
Support	1295.25	1291.50	1287.50	1285.25	1282.50

5. COMMENTARY

ES has closed down 3 consecutive days and tried to pullback into its previous consolidation range. Today a break down through the previous high in early July of 1290.50 would confirm the top and eliminate all short-term bulls. If prices break down through 1283 level will state the next leg down is underway.

Daily SST approaches overbought area, it also indicates that ES has reached or is near its top.



6. TODAY'S TRADING

Based on 120 mins chart, ES stayed inside its uptrend channel since July 17. Short term wave 5 seems to complete around 1307.50 level. Today, price could dip into 1283 if ES fails to hold above 1290.50 level.

ES is in critical level, *make it or break it* depends on today's movement. If ES can't breakout 1300.50 level, it is more likely go down to test yesterday's low or further down.

8. OTHER INDICATORS

NatRSI (1day)	NatRSI (5day)	ATR 5	ATR 10	Waist number
0.35	0.70	9.30	9.75	1299.63
neutral	neutral			

9. WEEKLY ECONOMIC CALENDAR

Projected Economic Releases for Next Week

(Consensus Forecasts vs. Previous Report)

Aug 24

Durable Orders	8:30	Jul	0.0% vs 2.9%
Initial Claims	8:30	08/19	NA vs 312K
New Home Sales	10:00	Jul	1100K vs 1131K