

# Naturus



## Daily trading plan for Aug. 21, 2006

### 1. ESU6 IN PREVIOUS DAY

Open	High	Low	Closing
1302.75	1307.75	1296.75	1307.25

### 2. PIVOTS FOR ESM6

	Daily	Weekly	Monthly	Yearly
R3	1322.08	1356.75	1362.75	1425.83
R2	1314.92	1332.25	1326.25	1355.42
R1	1311.08	1319.75	1304.00	1305.08
<b>PPT</b>	<b>1303.92</b>	<b>1295.25</b>	<b>1267.50</b>	<b>1234.67</b>
S1	1300.08	1282.75	1245.25	1184.33
S2	1292.92	1258.25	1208.75	1113.92
S3	1289.08	1245.75	1186.50	1063.58

### 3. FOCUS NUMBERS (intra-day Position trading)

Sell levels	Buying levels
1307.75 (First Sell#)	1295.25 (First Buy#)
1317.50 (Second Sell#)	1291.75 (second Buy#)

### 4. MAJOR RESISTANCE AND SUPPORT LEVELS FOR TODAY

Resistance	1307.75	1311.75	1315.75	1317.75	1319.75
Support	1300.25	1295.25	1291.25	1289.25	1282.25

## 5. COMMENTARY

ES had a solid gain last week. This may be setting the stage for a nice rally in the coming week. This week, the market may do little small dip and move higher to test May 11's high if 1293 level can be held firmly.

Currently MACD and SST indicators all support price to move high. ADX line suggest that whipsaw move from ES still will happen.

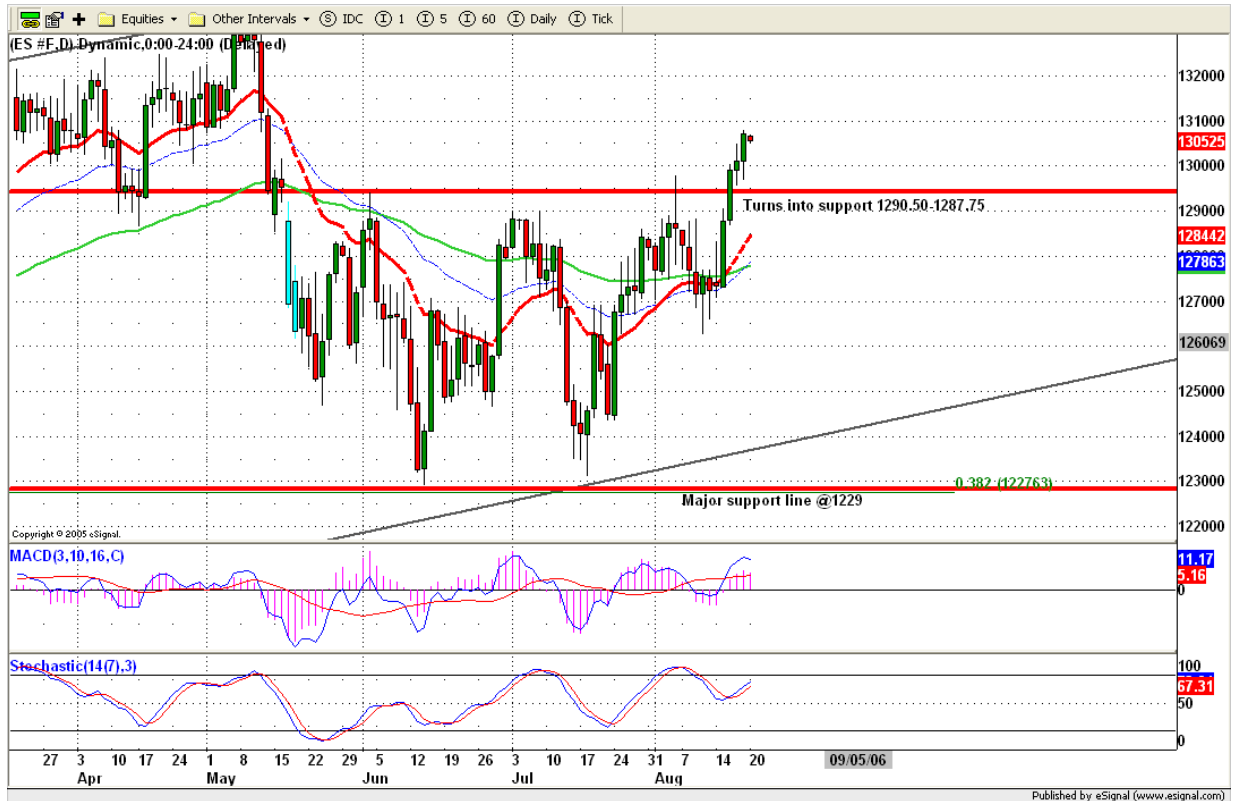


On daily chart, ES broke out its neckline from its inverted H&S pattern. Based on this movement, ES could move up to its this year's high 1331.25 level for testing or further to complete its bullish pattern around 1351-1357 range.

But there is one problem here-Lack of volume on upside movement in short term doesn't provide enough evidence to convince us that market will continue to move high. ES already had its 5 up days, CIT day is Aug. 22, and VIX at three month's low. Based on those factors, it is possible for ES to pullback in short term.

If ES breaks down 1287.75 level, it suggests that a big sharp decline could be on the way.

If ES breaks out 1318 level, it will delay downside movement until early Sept.



## 6. TODAY'S TRADING

Based on 60 mins chart, ES made high for Friday closing. It is almost closed to fill its May 12's Gap area around 1311.75.

In a very short term, ES is in overbought area. Pullback to 1300 or 1295/1296 area should be expected. As long as those levels can be held, market remains its bullish bias. We should expect ES may retest 1331 level to make its yearly double tops.

Major support is 1292.75. If this level is broken, we see high already. So we have to expect further down is on the way.



## 7. PREDICTION FOR TODAY'S MOVEMENT

### Current (interval=1.95)

1316.41	+2/8
1314.45	+1/8
1312.50	8/8
1310.55	7/8
1308.59	6/8
1306.64	5/8
1304.69	4/8
1302.73	3/8
1300.78	2/8
1298.83	1/8
1296.88	0/8
1294.92	-1/8
1292.97	-2/8

### Up (Interval=1.95)

1324.22	+2/8
1322.27	+1/8
1320.31	8/8
1318.36	7/8
1316.41	6/8
1314.45	5/8
1312.50	4/8
1310.55	3/8
1308.59	2/8
1306.64	1/8
1304.69	0/8
1302.73	-1/8
1300.78	-2/8

### Down (Interval=1.95)

1308.59	+2/8
1306.64	+1/8
1304.69	8/8
1302.73	7/8
1300.78	6/8
1298.83	5/8
1296.88	4/8
1294.92	3/8
1292.97	2/8
1291.02	1/8
1289.06	0/8
1287.11	-1/8
1285.16	-2/8

## 8. OTHER INDICATORS

NatRSI (1day)	NatRSI (5day)	ATR 5	ATR 10	Waist number
0.77	0.90	10.25	11.38	1305.00
Overbought	overbought			

## 9. WEEKLY ECONOMIC CALENDAR

### Projected Economic Releases for Next Week

(Consensus Forecasts vs. Previous Report)

#### Aug 23

Existing Home Sales	10:00	Jul	6.58M vs 6.62M
Crude Inventories	10:30	08/18	NA vs -1607K

#### Aug 24

Durable Orders	8:30	Jul	0.0% vs 2.9%
Initial Claims	8:30	08/19	NA vs 312K
New Home Sales	10:00	Jul	1100K vs 1131K