

Naturus



Daily trading plan for Aug. 7, 2006

1. ESU6 IN PREVIOUS DAY

Open	High	Low	Closing
1293.75	1297.50	1278.00	1286.00

2. PIVOTS FOR ESM6

	Daily	Weekly	Monthly	Yearly
R3	1315.83	1325.50	1362.75	1425.83
R2	1306.67	1311.50	1326.25	1355.42
R1	1296.33	1298.75	1304.00	1305.08
PPT	1287.17	1284.75	1267.50	1234.67
S1	1276.83	1272.00	1245.25	1184.33
S2	1267.67	1258.00	1208.75	1113.92
S3	1257.33	1245.25	1186.50	1063.58

3. FOCUS NUMBERS (intra-day Position trading)

Sell levels	Buying levels
1292.25-1293.75 (First Sell#)	1275.25 (First Buy#)
1301.50 (Second Sell#)	1268.75 (second Buy#)

4. MAJOR RESISTANCE AND SUPPORT LEVELS FOR TODAY

Resistance	1289.75	1291.75	1296.50	1298.75	1304.00
Support	1282.00	1276.75	1272.25	1267.50	1258.00

5. COMMENTARY

Last week ES only gained 1.75 points which is pretty much a breakeven. The chart looks like indecisive based on the weekly net movement.

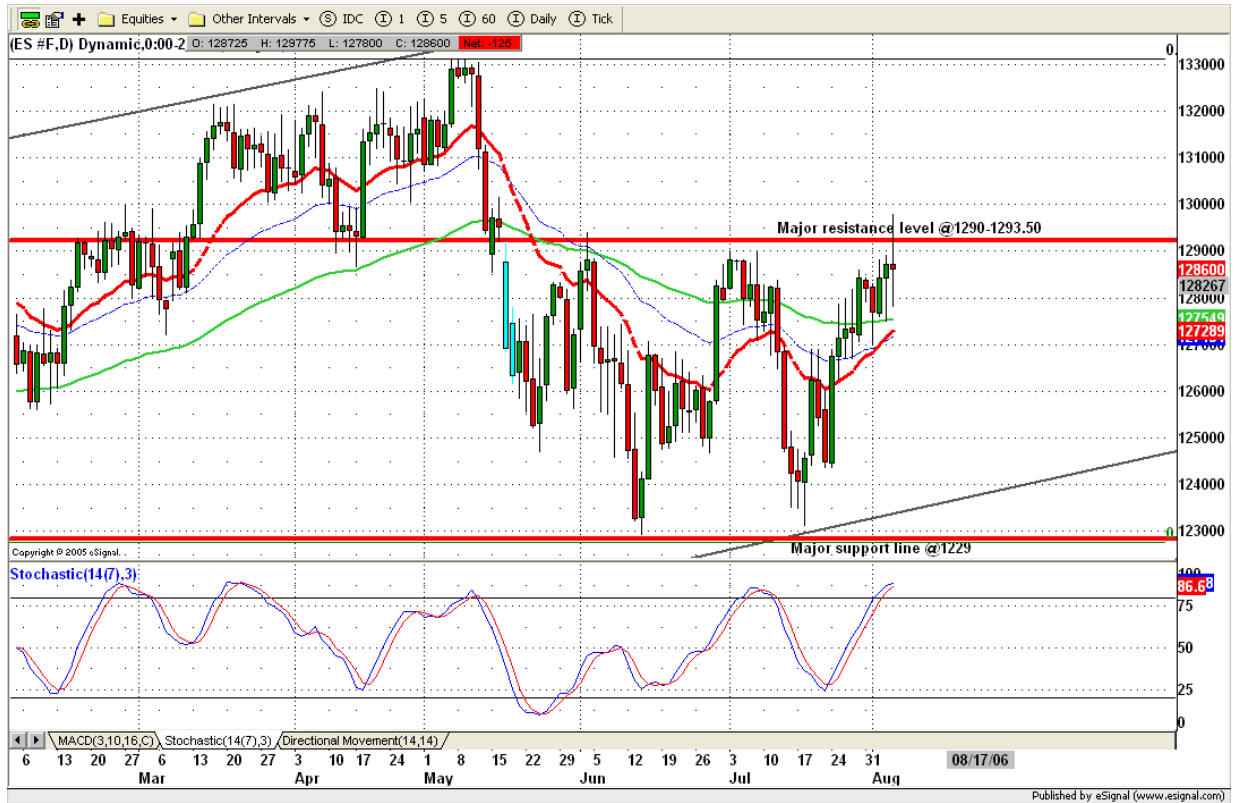
Let us take a close look at ES. First, that major resistance level 1290 has been broken - a major victory for bulls. But the close under there for the week has more bearish implications than bullish one. Second, ES made its two-month high on Friday means that at least some buying interest still is out there. This interest could push price higher to next resistance level which is psychological level around 1300. The problem is that ES has done a very poor job of holding its gain, especially last Friday.

This week will be critical. For ES, a close back under 1268 level is bearish, while a couple of closes above 1300 would set up some more upside movement.



ES daily chart, last Friday it also performed indecisive movement. Today ES could form an inside day with relatively narrower range than last Friday to wait for tomorrow FOMC announcement.

SST indicates that ES stays above overbought area. Watch for "Sell signal" show up.



6. TODAY'S TRADING

Based on 60 mins chart, ES hit 1297.75 two-month's high level, but couldn't hold its gain. At the end, it gave up all gain and closed in red. Today, ES could move up to retest 1289.75, 1293.75 level if 1283.75 level can be held. Fail to hold 1283 level, it is likely dip to last Friday's low 1278 or lower to 1270.25



7. PREDICTION FOR TODAY'S MOVEMENT

Current (interval=1.95)

1300.78	+2/8
1298.83	+1/8
1296.88	8/8
1294.92	7/8
1292.97	6/8
1291.02	5/8
1289.06	4/8
1287.11	3/8
1285.16	2/8
1283.20	1/8
1281.25	0/8
1279.30	-1/8
1277.34	-2/8

Up (Interval=1.95)

1300.78	+2/8
1298.83	+1/8
1296.88	8/8
1294.92	7/8
1292.97	6/8
1291.02	5/8
1289.06	4/8
1287.11	3/8
1285.16	2/8
1283.20	1/8
1281.25	0/8
1279.30	-1/8
1277.34	-2/8

Down (Interval=1.95)

1292.97	+2/8
1291.02	+1/8
1289.06	8/8
1287.11	7/8
1285.16	6/8
1283.20	5/8
1281.25	4/8
1279.30	3/8
1277.34	2/8
1275.39	1/8
1273.44	0/8
1271.48	-1/8
1269.53	-2/8

8. OTHER INDICATORS

NatRSI (1day)	NatRSI (5day)	ATR 5	ATR 10	Waist number
0.30	0.70	11.20	13.25	1289.63
neutral	Overbought			

9. WEEKLY ECONOMIC CALENDAR

Projected Economic Releases for This Week

(Consensus Forecasts vs. Previous Report)

August 7

Consumer Credit	3pm	June	\$4.0B vs. \$4.4B
-----------------	-----	------	-------------------

August 8

Productivity-Prelim.	8:30	Q2	1.1% vs. 3.7%
FOMC policy statement	2:15		

August 9

Wholesale Inventories	10:00	June	0.6% vs. 0.8%
Crude Inventories	10:30	08/04	N/A vs. - 1774K

August 10

Initial Claims	8:30	08/05	310K vs. 315K
Trade Balance	8:30	June	\$ - 64.5B vs. \$ - 63.8B
Treasury Budget	2pm	July	\$ - 47.8B vs. \$ - 53.4B

August 11

Export Prices ex-ag.	8:30	July	N/A vs. 0.6%
Import Prices ex-oil	8:30	July	N/A vs. 0.4%
Retail Sales	8:30	July	0.6% vs. -0.1%
Retail Sales ex-auto	8:30	July	0.5% vs. 0.3%
Business Inventories	10:00	June	0.5% vs. 0.8%