

Naturus



Daily trading plan for May 3, 2006

1. ESM6 IN PREVIOUS DAY

Open	High	Low	Closing
1314.25	1319.00	1311.50	1318.00

2. PIVOTS FOR ESM6

	Daily	Weekly	Monthly	Yearly
R3	1327.92	1347.00	1369.92	1425.83
R2	1323.33	1334.50	1347.33	1355.42
R1	1320.67	1325.25	1331.67	1305.08
PPT	1316.08	1312.75	1309.08	1234.67
S1	1313.42	1303.50	1293.42	1184.33
S2	1308.83	1291.00	1270.83	1113.92
S3	1306.17	1281.75	1255.17	1063.58

3. FOCUS NUMBERS (intra-day Position trading)

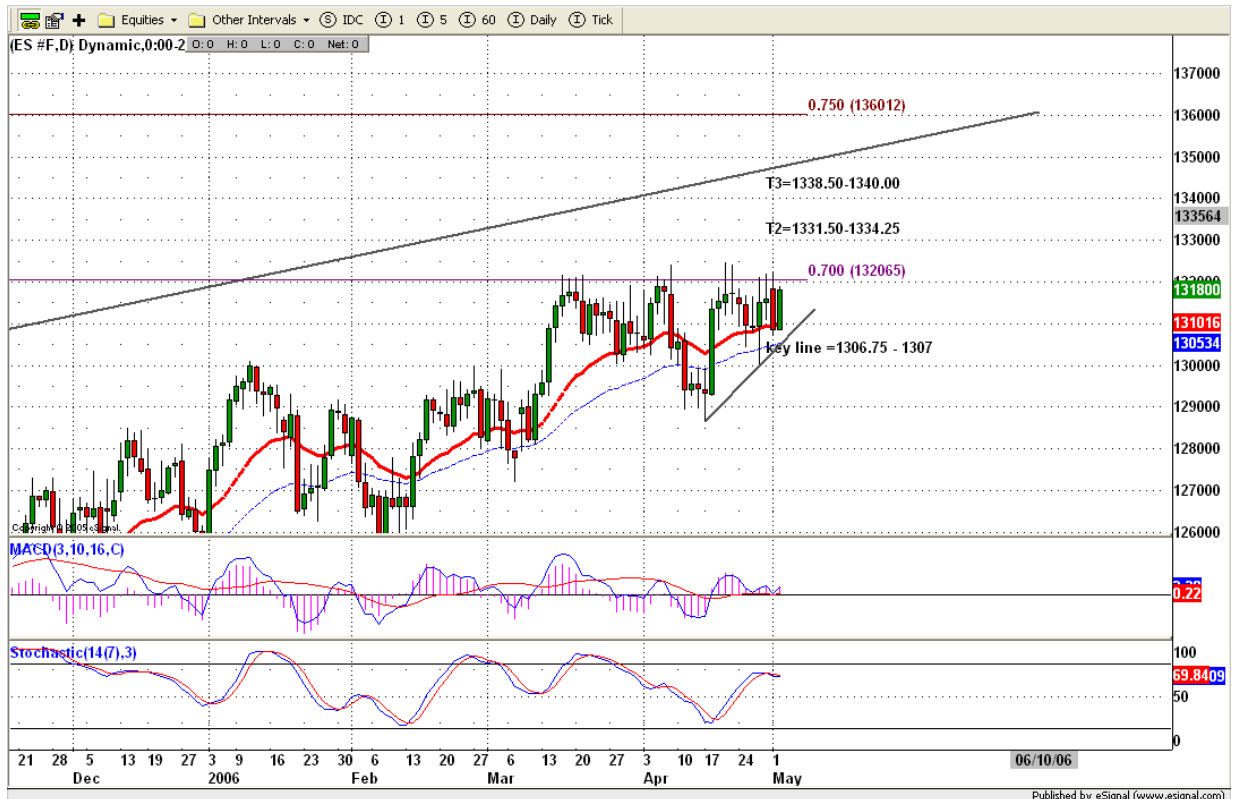
Sell levels	Buying levels
1322.75-1324 (First Sell#)	1313.50 (First Buy#)
1329.25-1331.50 (Second Sell#)	1306.75-1307.75 (second Buy#)

4. MAJOR RESISTANCE AND SUPPORT LEVELS FOR TODAY

Resistance	1320.75	1322.00	1323.75	1326.00	1332.50
Support	1315.00	1313.50	1311.25	1307.25	1304.25

5. COMMENTARY

ES bounced from its previous day's closing price and closed at the high trading range yesterday. Uptrend line continues to hold price. We may see breakout movement today as soon as 1322.50 level is broken. Otherwise, price could trade from 1323 to 1314.50 for one more day.



6. TODAY'S TRADING

Based on 60mins chart, ES held above its major support line 1306.75 and made higher lows. This pattern still could be an inverted H&S pattern, just we got second shoulders. Today if ES can continue to hold price about 1314.50 level, Bulls will try to push price up again. For the upside movement, 1322.50 level is key line, breakout this level, price could run up to 1326.25 or higher to 1331.50 level to complete its bullish pattern.

For the downside movement, we may see price sells off if ES can't take out 1319 level.

So far 60min indicators still support bulls' move. Therefore I expect that price could go up in the early morning and later hour we may see some pullback.



7. PREDICTION FOR TODAY'S MOVEMENT

Current (interval=0.95)

1322.27	+2/8
1321.29	+1/8
1320.31	8/8
1319.34	7/8
1318.36	6/8
1317.38	5/8
1316.41	4/8
1315.43	3/8
1314.45	2/8
1313.48	1/8
1312.50	0/8
1311.52	-1/8
1310.55	-2/8

Up (Interval=1.95)

1332.03	+2/8
1330.08	+1/8
1328.13	8/8
1326.17	7/8
1324.22	6/8
1322.27	5/8
1320.31	4/8
1318.36	3/8
1316.41	2/8
1314.45	1/8
1312.50	0/8
1310.55	-1/8
1308.59	-2/8

Down (Interval=1.95)

1324.22	+2/8
1322.27	+1/8
1320.31	8/8
1318.36	7/8
1316.41	6/8
1314.45	5/8
1312.50	4/8
1310.55	3/8
1308.59	2/8
1306.64	1/8
1304.69	0/8
1302.73	-1/8
1300.78	-2/8

8. OTHER INDICATORS

NatRSI (1day)	NatRSI (5day)	ATR 5	ATR 10	Waist number
0.79	0.51	12.55	11.58	1316.13
overbought	neutral			

9. WEEKLY ECONOMIC CALENDAR

Projected Economic Releases for Next Week

(Consensus Forecasts vs. Previous Report)

May 3

Factory Orders	10:00	Mar	1.5% vs 0.2%
ISM Services	10:00	Apr	59.4 vs 60.5
Crude Inventories	10:30	04/28	NA vs -226K

May 4

Initial Claims	8:30	04/29	NA vs 315K
Productivity-Prel	8:30	Q1	3.0% vs -0.5%

May 5

Average Workweek	8:30	Apr	33.8 vs 33.8
Hourly Earnings	8:30	Apr	0.3% vs 0.2%
Nonfarm Payrolls	8:30	Apr	198K vs 211K
Unemployment Rate	8:30	Apr	4.7% vs 4.7%
Consumer Credit	15:00	Mar	\$4.5B vs \$3.3B