

# Naturus



## Daily trading plan for Jan. 3, 2006

### 1. ESH6 IN PREVIOUS DAY

Open	High	Low	Closing
1255.75	1258.50	1251.25	1254.75

### 2. PIVOTS FOR ESH6

	Daily	Weekly	Monthly	Yearly
R3	1265.67	1300.60	1309.83	1425.83
R2	1262.08	1290.08	1297.42	1355.42
R1	1258.42	1272.41	1276.08	1305.08
<b>PPT</b>	<b>1254.83</b>	<b>1261.83</b>	<b>1263.67</b>	<b>1234.67</b>
S1	1251.17	1244.16	1242.33	1184.33
S2	1247.58	1233.58	1229.92	1113.92
S3	1243.92	1215.91	1208.58	1063.58

### 3. FOCUS NUMBERS (intra-day Position trading)

Sell levels	Buying levels
1262.50 (First Sell#)	1251.00 (First Buy#)
1269.25 (Second Sell#)	1244.25 (second Buy#)

### 4. MAJOR RESISTANCE AND SUPPORT LEVELS FOR TODAY

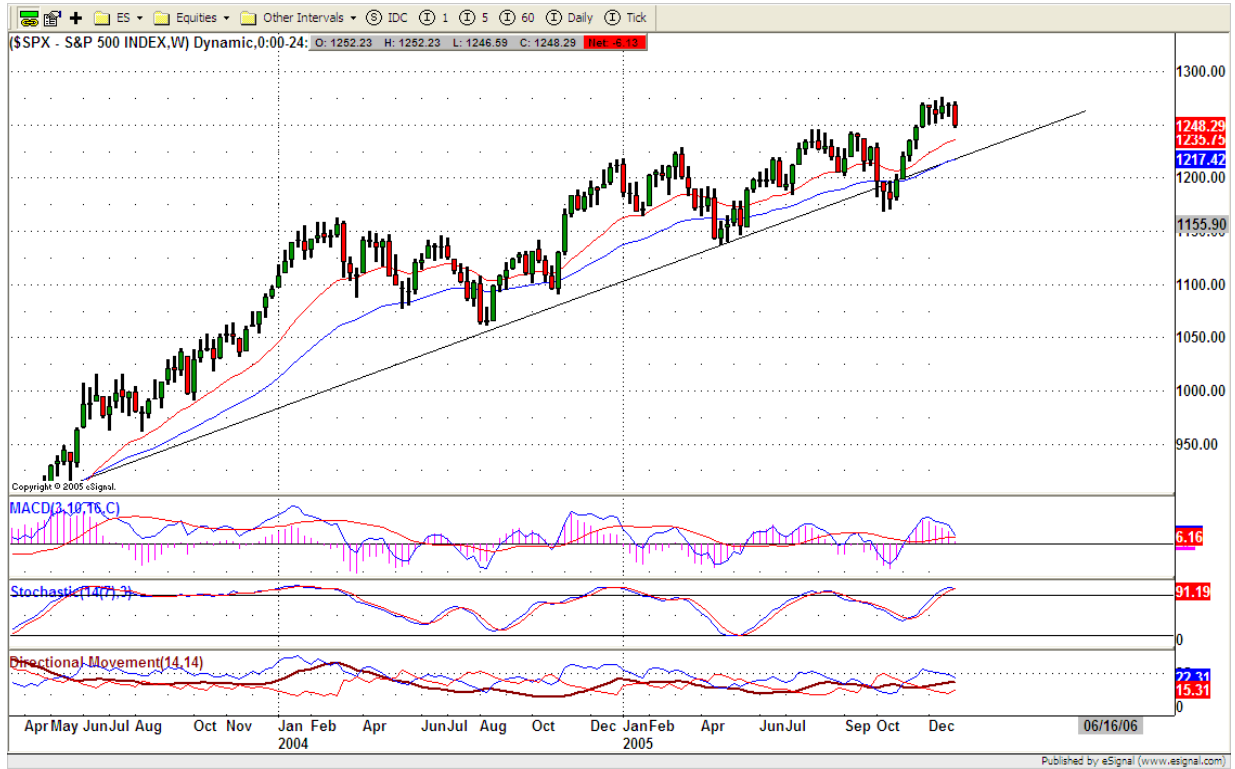
<b>Resistance</b>	1258.50	1261.75	1263.75	1265.50	1268.75
<b>Support</b>	1251.25	1247.50	1244.25	1242.25	1234.25

### 5. COMMENTARY

Copyright 2004 by Naturus Inc. All rights are reserved and Printed in Canada. Photocopying and further distribution of this newsletter are strictly prohibited. Information, opinion, research, and commentary contained herein is obtained from sources believed to be reliable; their reliability, however, cannot be guaranteed. The maxim of Caveat Emptor applies – let the buyer beware! This newsletter is for education purpose only. It doesn't provide for individual investment advice, or act as an investment advisor, or individually advocate the purchase or sale of any security or investment. In making any investment decision, you will rely solely on your own review and examination of the facts and the records relating to such investments. Past performance of our recommendations is not an indication of future performance. We shall have no liability of whatever nature in respect of any claim, damages, loss or expense arising out of or in connection with the reliance by you on the contents of our newsletter, any promotion, published material, alert or update.

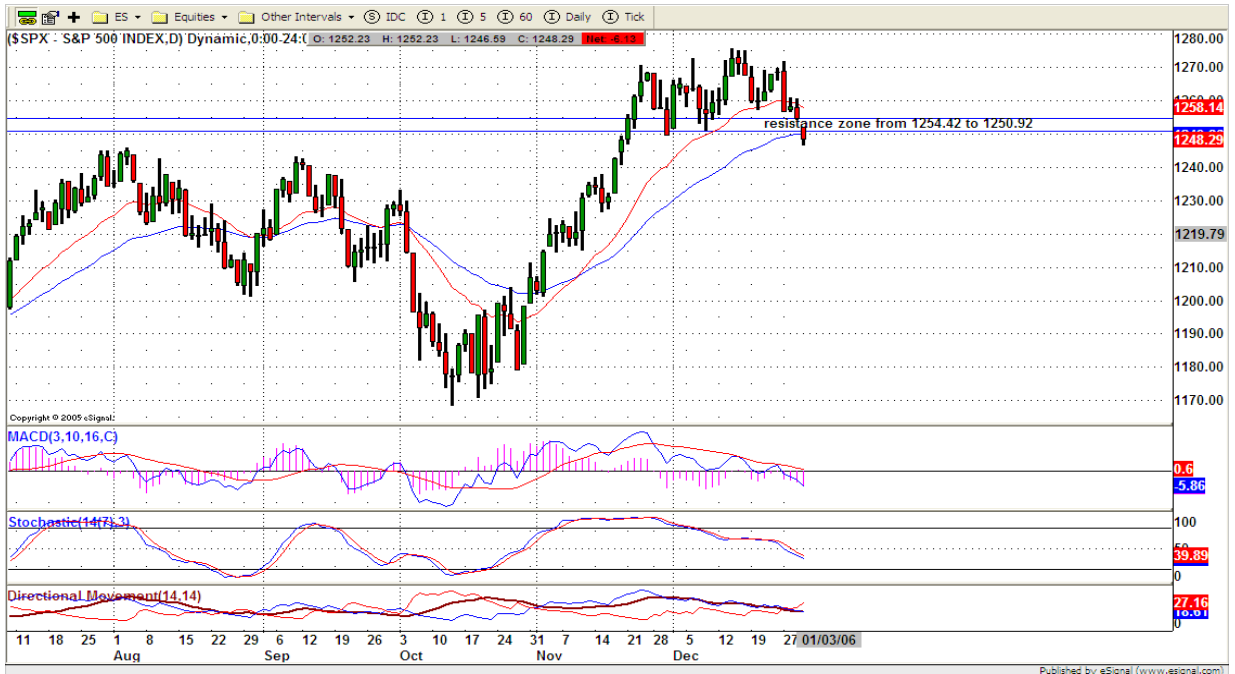
Welcome to the Year 2006. In the past year, S&P500 (\$SPX) made 3% gain, Nasdaq rose 1.5% and Russell 3.3%, but DOW lost 0.5% the first year-over-year loss since 2002. Since the last half of 2004, SPX traded up like sea waves within a 100-point trading range each year. But the weekly SPX chart (below) shows the SPX topping out in the last six months of the year. Downside correction should be expected.

In Long term, major support levels for SPX are 1233/1234, 1200/1206 and 1176/1140. Breakdown any one of those support zones, downside momentum will speed up and push price down further. In the first six months, we may see choppy movement in the market.

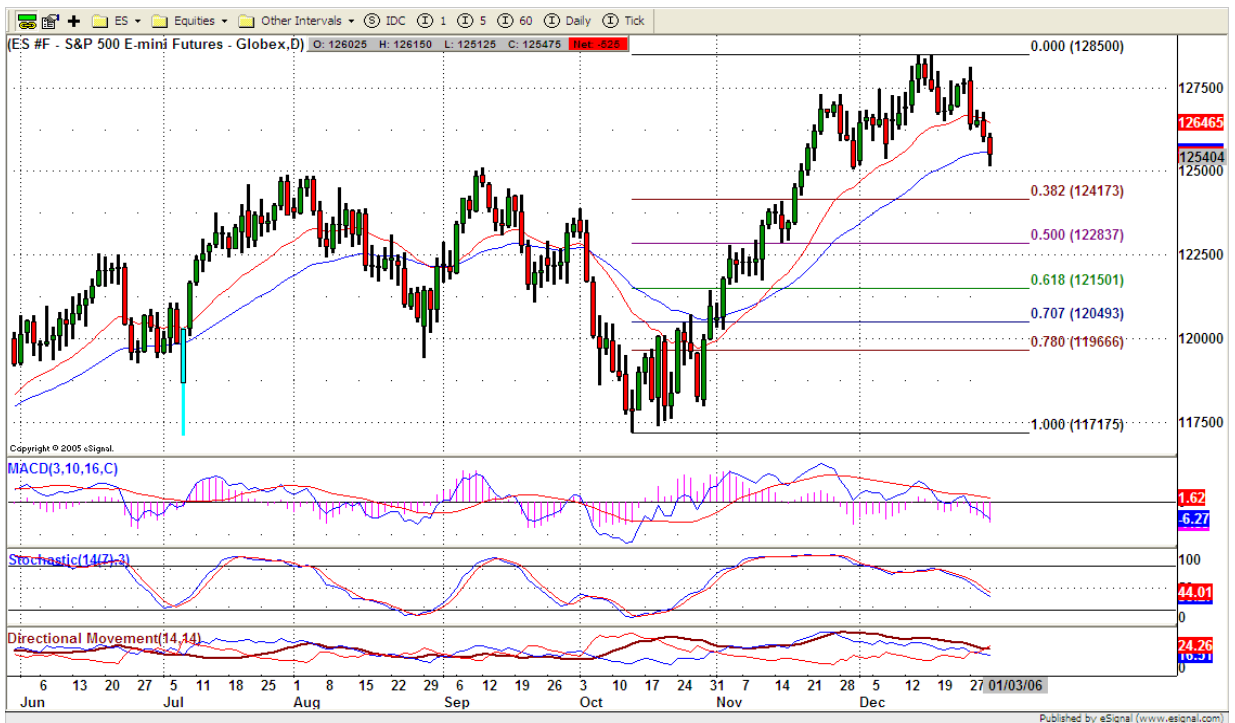


Last trading day of 2005, SPX gapped down at open and never had strength to fill its gap. This is a weakness sign. SPX closed below 20 and 40 day moving averages. Those two moving average lines turn into resistance level. We may see price going back to test those lines. As long as price doesn't close above 1260 level, any bounce will attract shorts stepping into the market. Bears will enjoy taking control in the market.

For very short term, 1218 level should be first target for bears in the coming weeks.



Let us look at ES daily chart, similar to S&P 500 daily chart, but only different is SPX broke its range, and ES didn't. ES still traded above 1250 level and closed right on its 40 day moving average line, even though indicators are all bearish. Nerveless, ES intends to fill its last Dec gap at 1251 and last Nov. at 1234.75



## 6. TODAY'S TRADING

Today's trading, price could retest last Friday's high at 1258.50 or 1265.50 level, it could test low first to create a buying base in the early morning trading



## 7. PREDICTION FOR TODAY'S MOVEMENT



**Current (interval=0.95)**

1259.77	+2/8
1258.79	+1/8
1257.81	8/8
1256.84	7/8
1255.86	6/8
1254.88	5/8
1253.91	4/8
1252.93	3/8
1251.95	2/8
1250.98	1/8
1250.00	0/8
1249.02	-1/8
1248.05	-2/8

**Up (Interval=1.95)**

1269.53	+2/8
1267.58	+1/8
1265.63	8/8
1263.67	7/8
1261.72	6/8
1259.77	5/8
1257.81	4/8
1255.86	3/8
1253.91	2/8
1251.95	1/8
1250.00	0/8
1248.05	-1/8
1246.09	-2/8

**Down (Interval=1.95)**

1261.72	+2/8
1259.77	+1/8
1257.81	8/8
1255.86	7/8
1253.91	6/8
1251.95	5/8
1250.00	4/8
1248.05	3/8
1246.09	2/8
1244.14	1/8
1242.19	0/8
1240.23	-1/8
1238.28	-2/8

**8. OTHER INDICATORS**

<b>NatRSI</b>	<b>ATR 5</b>	<b>ATR 10</b>	<b>Waist number</b>
0.43	8.65	8.80	1255.25
neutral			

**9. WEEKLY ECONOMIC CALENDAR**

Date	ET	Release	For	Consensus	Prior
Jan 03	10:00	ISM Index	Dec	57.0	58.1
Jan 03	14:00	FOMC Minutes	Dec 13	-	-
Jan 04	00:00	Auto Sales	Dec	5.7M	5.5M
Jan 04	00:00	Truck Sales	Dec	7.5M	7.0M
Jan 04	10:00	Factory Orders	Nov	1.8%	2.2%
Jan 05	08:30	Initial Claims	12/31	NA	322K
Jan 05	10:00	ISM Services	Dec	59.0	58.5
Jan 05	10:30	Crude Inventories	12/30	-	-
Jan 06	08:30	Nonfarm Payrolls	Dec	200K	215K
Jan 06	08:30	Unemployment Rate	Dec	5.0%	5.0%
Jan 06	08:30	Hourly Earnings	Dec	0.2%	0.2%
Jan 06	08:30	Average Workweek	Dec	33.7	33.7