

# Naturus



## Daily trading plan for Dec. 9, 2005

### 1. ESH6 IN PREVIOUS DAY

Open	High	Low	Closing
1266.75	1272.75	1259.25	1264.75

### 2. PIVOTS FOR ESZ5

	Daily	Weekly	Biweekly	Monthly	Yearly
R3	1285.42	1294.67	1298.00	1309.17	1428.75
R2	1279.08	1282.83	1285.50	1274.08	1324.25
R1	1271.92	1274.42	1275.75	1241.92	1269.00
PPT	1265.58	1262.58	1263.25	1206.83	1164.50
S1	1258.42	1254.17	1253.50	1174.67	1109.25
S2	1252.08	1242.33	1241.00	1139.58	1004.75
S3	1244.08	1233.92	1231.25	1107.42	949.50

\* Blue color number turns into major resistance levels.

\* Green color number currently acts as a support level.

### 3. FOCUS NUMBERS (intra-day Position trading)

Sell levels	Buying levels
1271.50 (First Sell#)	1260.50 (First Buy#)
1277.00 (Second Sell#)	1252.50 (second Buy#)

#### Trading rules for intra-day position trading:

1. **Dual number** could be used for long position when price trades above it. Also it could be used for short position when price trades below it. Inexperienced traders should not trade this number.
2. For intra-day position traders, you have the potential to capture a big move if you are trading in the right direction. If you get stopped out two times in one direction, especially during a strong trend day. **STOP** trading for rest of the day.

3. If you are a scalping trader, **DON'T** hold your position too long if you trading against the direction of a strong trend.
4. If you are in right direction of the market movement, you can hold your position until price hit opposite major resistance or support level target.

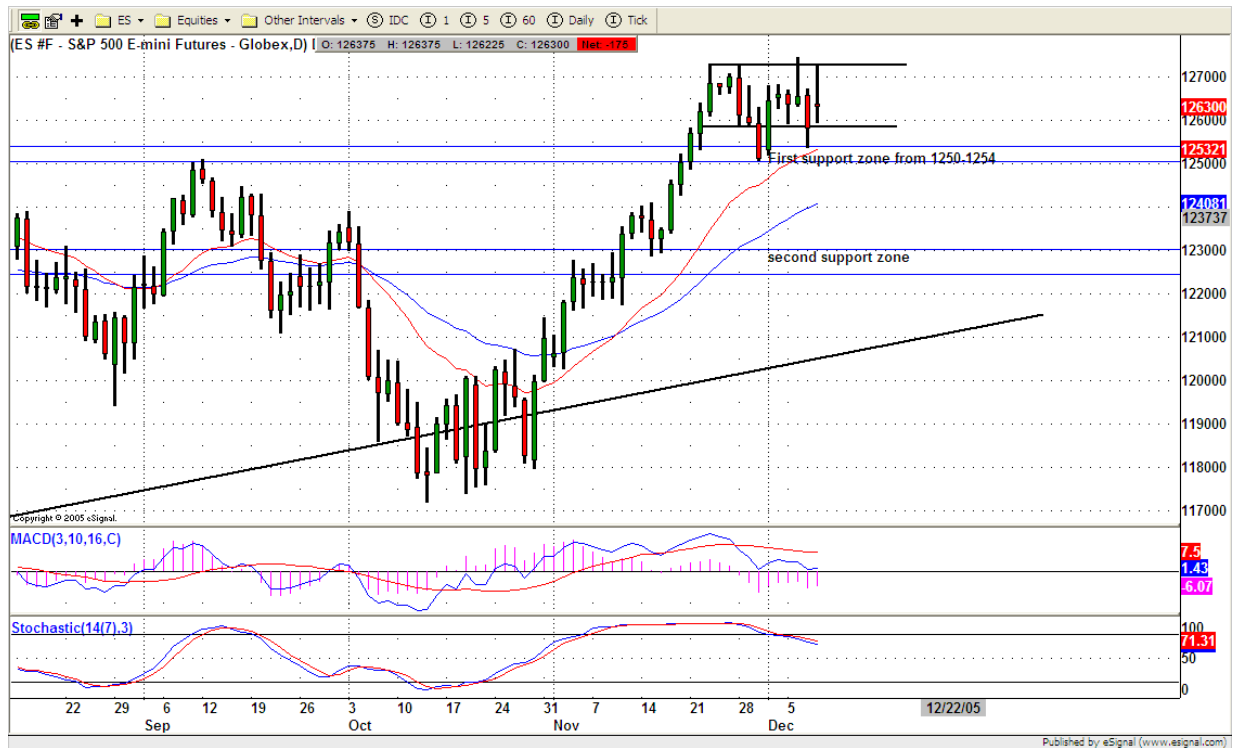
#### 4. MAJOR RESISTANCE AND SUPPORT LEVELS FOR TODAY

<b>Resistance</b>	1266.75	1268.75	1272.00	1273.50	1275.50
-------------------	---------	---------	---------	---------	---------

<b>Support</b>	1263.25	1261.25	1258.25	1256.25	1251.00
----------------	---------	---------	---------	---------	---------

#### 5. COMMENTARY

**ES continues its consolidation at yearly top range. Based on its indicators, it looks like that ES tries to rebuild its strength for last up movement. Whether it can make or not, depends on Today's movement.**



#### 6. TODAY'S TRADING

**On 60 mins chart, ES formed a triangle pattern. Today, if 58 level can hold price from falling, ES is likely to bounce back to 1270. 1265.75 is key level.**



## 7. PREDICTION FOR TODAY'S MOVEMENT

### Current (interval=1.95)

1277.34	+2/8
1275.39	+1/8
1273.44	8/8
1271.48	7/8
1269.53	6/8
1267.58	5/8
1265.63	4/8
1263.67	3/8
1261.72	2/8
1259.77	1/8
1257.81	0/8
1255.86	-1/8
1253.91	-2/8

### Up (Interval=1.95)

1285.16	+2/8
1283.20	+1/8
1281.25	8/8
1279.30	7/8
1277.34	6/8
1275.39	5/8
1273.44	4/8
1271.48	3/8
1269.53	2/8
1267.58	1/8
1265.63	0/8
1263.67	-1/8
1261.72	-2/8

### Down (Interval=1.95)

1269.53	+2/8
1267.58	+1/8
1265.63	8/8
1263.67	7/8
1261.72	6/8
1259.77	5/8
1257.81	4/8
1255.86	3/8
1253.91	2/8
1251.95	1/8
1250.00	0/8
1248.05	-1/8
1246.09	-2/8

## 8. OTHER INDICATORS

<b>NatRSI</b>	<b>ATR 5</b>	<b>ATR 10</b>	<b>Waist number</b>
<b>0.43</b>	<b>9.65</b>	<b>9.65</b>	<b>1265.75</b>
Neutral			

1. NatRSI >80-90                      overbought  
   NatRSI >30 or <70                neutral  
   NatRSI <20                         oversold
2. **ATR** (Average true range) can be used for predicting intra-day's high and low.
3. **Waist number** is MMLine number, acting pivot number, can be used for support or resistance. Price trades above its level, market is bullish; price trades below its level, market is bearish.

## 9. WEEKLY ECONOMIC CALENDAR

<b>Date</b>	<b>ET</b>	<b>Release</b>	<b>For</b>	<b>Consensus</b>	<b>Prior</b>
Dec 09	09:45	Mich Sentiment-Prel.	Dec	84.0	81.6
Dec 09	10:00	Wholesale Inventories	Oct	0.4%	0.6%