

Naturus



Daily trading plan for Dec. 7, 2005

1. ESZ5 IN PREVIOUS DAY

Open	High	Low	Closing
1267.75	1274.50	1263.75	1265.50

2. PIVOTS FOR ESZ5

	Daily	Weekly	Biweekly	Monthly	Yearly
R3	1283.17	1294.67	1298.00	1309.17	1428.75
R2	1278.83	1282.83	1285.50	1274.08	1324.25
R1	1272.17	1274.42	1275.75	1241.92	1269.00
PPT	1267.83	1262.58	1263.25	1206.83	1164.50
S1	1261.17	1254.17	1253.50	1174.67	1109.25
S2	1256.83	1242.33	1241.00	1139.58	1004.75
S3	1250.17	1233.92	1231.25	1107.42	949.50

* Blue color number turns into major resistance levels.

* Green color number currently acts as a support level.

3. FOCUS NUMBERS (intra-day Position trading)

Sell levels	Buying levels
1269.00 (First Sell#)	1267.00 (First Buy#) *dual number
1271-1273 (Second Sell#)	1258.00 (second Buy#)

Trading rules for intra-day position trading:

1. **Dual number** could be used for long position when price trades above it. Also it could be used for short position when price trades below it. Inexperienced traders should not trade this number.
2. For intra-day position traders, you have the potential to capture a big move if you are trading in the right direction. If you get stopped out two times in one direction, especially during a strong trend day. **STOP** trading for rest of the day.

3. If you are a scalping trader, **DON'T** hold your position too long if you trading against the direction of a strong trend.
4. If you are in right direction of the market movement, you can hold your position until price hit opposite major resistance or support level target.

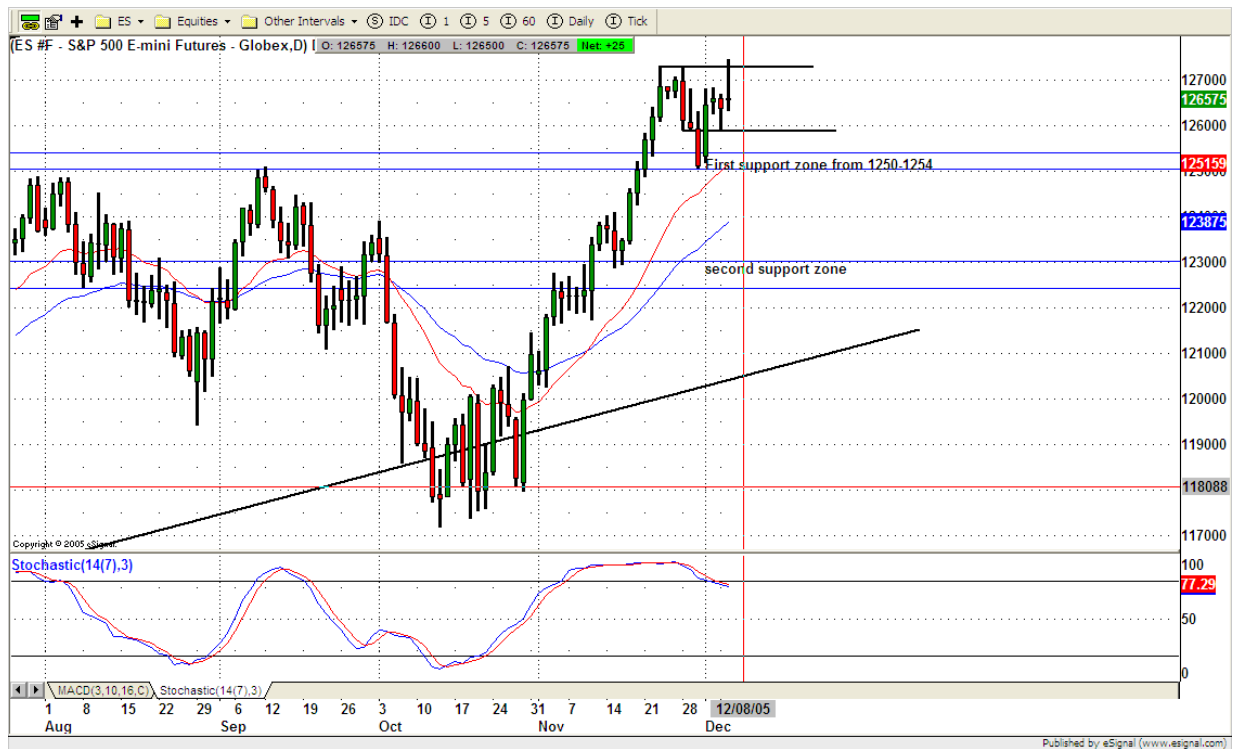
4. MAJOR RESISTANCE AND SUPPORT LEVELS FOR TODAY

Resistance	1266.75	1268.75	1272.00	1273.50	1275.50
-------------------	---------	---------	---------	---------	---------

Support	1263.25	1261.25	1258.25	1256.25	1251.00
----------------	---------	---------	---------	---------	---------

5. COMMENTARY

ES retested its yearly high and made a little bit higher, but it could hold its gain. Finally it closed at lower trading range and made a very ugly doji pattern. So far, ES continues trading inside a consolidation range. It could retest its first support zone today or tomorrow.



6. TODAY'S TRADING

On 60 mins chart, ES moved down from its uptrend channel top band into lower band. Today if ES can't hold price above 1263.50-1261, it is likely going down to retest 1258 level, or further down to 1251 level.



7. PREDICTION FOR TODAY'S MOVEMENT

Current (interval=1.95)

1285.16	+2/8
1283.20	+1/8
1281.25	8/8
1279.30	7/8
1277.34	6/8
1275.39	5/8
1273.44	4/8
1271.48	3/8
1269.53	2/8
1267.58	1/8
1265.63	0/8
1263.67	-1/8
1261.72	-2/8

Up (Interval=1.95)

1285.16	+2/8
1283.20	+1/8
1281.25	8/8
1279.30	7/8
1277.34	6/8
1275.39	5/8
1273.44	4/8
1271.48	3/8
1269.53	2/8
1267.58	1/8
1265.63	0/8
1263.67	-1/8
1261.72	-2/8

Down (Interval=0.98)

1267.58	+2/8
1266.60	+1/8
1265.63	8/8
1264.65	7/8
1263.67	6/8
1262.70	5/8
1261.72	4/8
1260.74	3/8
1259.77	2/8
1258.79	1/8
1257.81	0/8
1256.84	-1/8
1255.86	-2/8

8. OTHER INDICATORS

NatRSI	ATR 5	ATR 10	Waist number
0.39	9.05	9.38	1266.63
Neutral			

1. NatRSI >80-90 overbought
NatRSI >30 or <70 neutral
NatRSI <20 oversold
2. **ATR** (Average true range) can be used for predicting intra-day's high and low.
3. **Waist number** is MMLine number, acting pivot number, can be used for support or resistance. Price trades above its level, market is bullish; price trades below its level, market is bearish.

9. WEEKLY ECONOMIC CALENDAR

Date	ET	Release	For	Consensus	Prior
Dec 07	10:30	Crude Inventories	12/2	-	-4188K
Dec 07	15:00	Consumer Credit	Oct	\$5.7B	-\$0.1B
Dec 08	08:30	Initial Claims	12/03	NA	320K
Dec 09	09:45	Mich Sentiment-Prel.	Dec	84.0	81.6
Dec 09	10:00	Wholesale Inventories	Oct	0.4%	0.6%