

Naturus



Daily trading plan for Nov. 23, 2005

1. ESZ5 IN PREVIOUS DAY

Open	High	Low	Closing
1254.50	1264	1253	1262

2. PIVOTS FOR ESZ5

	Daily	Weekly	Biweekly	Monthly	Yearly
R3	1277.33	1282.58	1297.25	1309.17	1428.75
R2	1270.67	1267.42	1274.75	1274.08	1324.25
R1	1266.33	1258.83	1262.50	1241.92	1269.00
PPT	1259.67	1243.67	1240.00	1206.83	1164.50
S1	1255.33	1235.08	1227.75	1174.67	1109.25
S2	1248.67	1219.92	1205.25	1139.58	1004.75
S3	1244.33	1211.33	1193.00	1107.42	949.50

* Blue color number turns into major resistance levels.

* Green color number currently acts as a support level.

3. FOCUS NUMBERS (intra-day Position trading)

Sell levels	Buying levels
1264.25 (First Sell#)	1254 (First Buy#)
1272.25 (Second Sell#)	1252 (second Buy #)

Trading rules for intra-day position trading:

1. **Dual number** could be used for long position when price trades above it. Also it could be used for short position when price trades below it. Inexperienced traders should not trade this number.
2. For intra-day position traders, you have the potential to capture a big move if you are trading in the right direction. If you get stopped out two times in one direction, especially during a strong trend day. **STOP** trading for rest of the day.

3. If you are a scalping trader, **DON'T** hold your position too long if you trading against the direction of a strong trend.
4. If you are in right direction of the market movement, you can hold your position until price hit opposite major resistance or support level target.

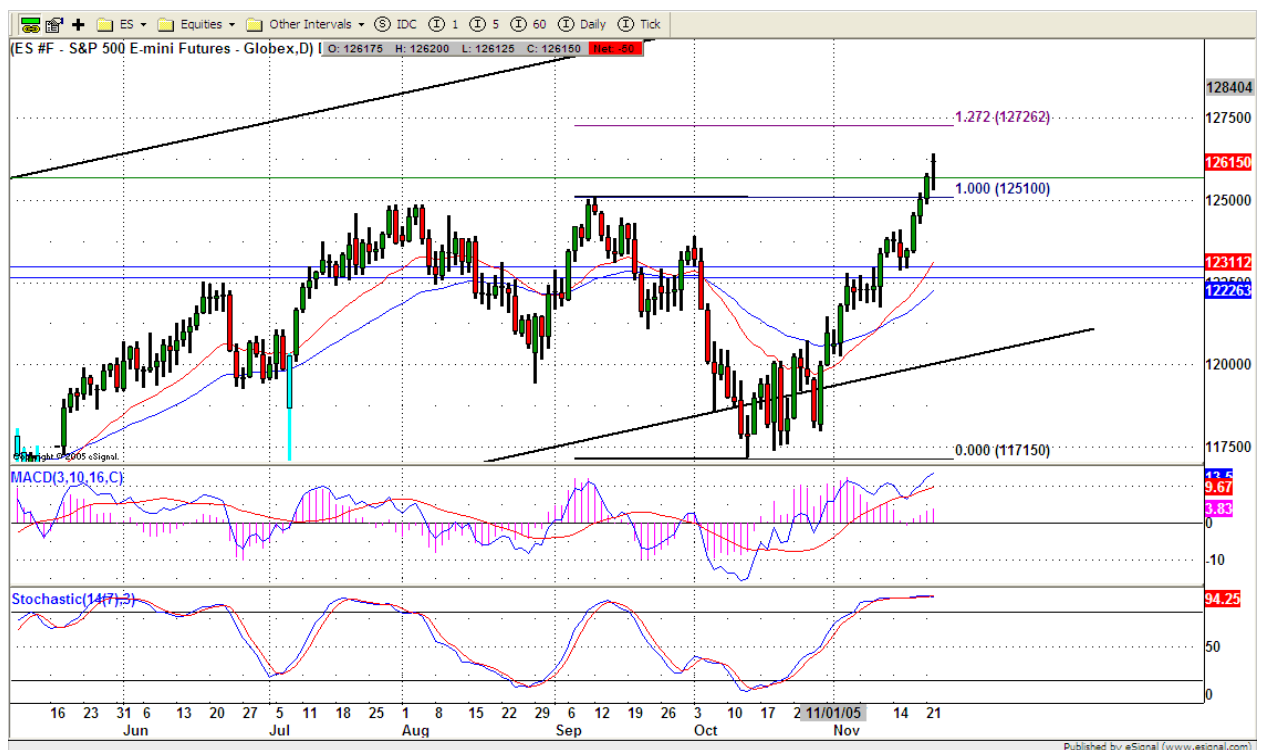
4. MAJOR RESISTANCE AND SUPPORT LEVELS FOR TODAY

Resistance	1264.25	1266.25	1270.50	1272.50	1277.25
-------------------	---------	---------	---------	---------	---------

Support	1258.25	1256.25	1254.75	1253	1250.25
----------------	---------	---------	---------	------	---------

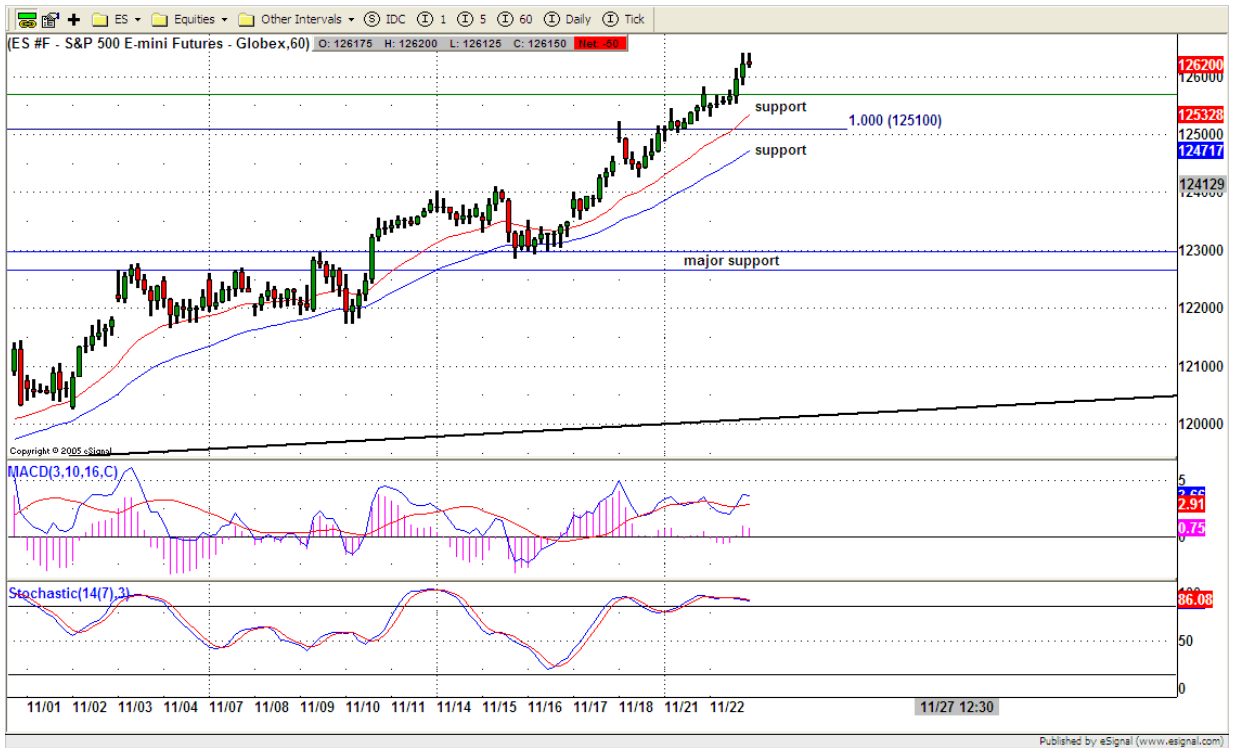
5. COMMENTARY

ES rallied in the afternoon again due to FOMC meeting inspired the market. It looks it could hit its extension high around 1272.50 level. This rally could remain until thanksgiving holiday is over even we see it is in extremely overbought territory.



6. TODAY'S TRADING

On 60mins chart, ES broke out 1258.25 level and made its new yearly high. Today it could retest 1258 level. If this level still can be held, price still could pop higher around to 1272.50 level. Today we have lots of reports in the morning, also only half day trading. So trading caution.



7. PREDICTION FOR TODAY'S MOVEMENT

Current (interval=1.95)

1269.53	+2/8
1267.58	+1/8
1265.63	8/8
1263.67	7/8
1261.72	6/8
1259.77	5/8
1257.81	4/8
1255.86	3/8
1253.91	2/8
1251.95	1/8
1250.00	0/8
1248.05	-1/8
1246.09	-2/8

Up (Interval=1.95)

1285.16	+2/8
1283.20	+1/8
1281.25	8/8
1279.30	7/8
1277.34	6/8
1275.39	5/8
1273.44	4/8
1271.48	3/8
1269.53	2/8
1267.58	1/8
1265.63	0/8
1263.67	-1/8
1261.72	-2/8

Down (Interval=0.95)

1259.77	+2/8
1258.79	+1/8
1257.81	8/8
1256.84	7/8
1255.86	6/8
1254.88	5/8
1253.91	4/8
1252.93	3/8
1251.95	2/8
1250.98	1/8
1250.00	0/8
1249.02	-1/8
1248.05	-2/8

Copyright 2004 by Natusur Inc. All rights are reserved and Printed in Canada. Photocopying and further distribution of this newsletter are strictly prohibited. Information, opinion, research, and commentary contained herein is obtained from sources believed to be reliable; their reliability, however, cannot be guaranteed. The maxim of Caveat Emptor applies – let the buyer beware! This newsletter is for education purpose only. It doesn't provide for individual investment advice, or act as an investment advisor, or individually advocate the purchase or sale of any security or investment. In making any investment decision, you will rely solely on your own review and examination of the facts and the records relating to such investments. Past performance of our recommendations is not an indication of future performance. We shall have no liability of whatever nature in respect of any claim, damages, loss or expense arising out of or in connection with the reliance by you on the contents of our newsletter, any promotion, published material, alert or update.

8. OTHER INDICATORS

NatRSI	ATR 5	ATR 10	Waist number
0.84	9.45	10.05	1258.25
overbought			

- NatRSI >80-90 overbought
 NatRSI >30 or <70 neutral
 NatRSI <20 oversold
- ATR** (Average true range) can be used for predicting intra-day's high and low.
- Waist number** is MMLine number, acting pivot number, can be used for support or resistance. Price trades above its level, market is bullish; price trades below its level, market is bearish.

9. WEEKLY ECONOMIC CALENDAR

Date	ET	Release	For	Consensus	Prior
Nov 23	08:30	Initial Claims	11/19	310K	303K
Nov 23	09:45	Mich Sentiment-Rev.	Nov	80.5	79.9
Nov 23	10:00	Help-Wanted Index	Oct	39	39
Nov 23	10:30	Crude Inventories	11/18		-2159K