

# Naturus



## Daily trading plan for Oct. 5, 2005

### 1. ESZ5 IN PREVIOUS DAY

Open	High	Low	Closing
1233.25	1235.50	1216.50	1216.75

### 2. PIVOTS FOR ESZ5

	Daily	Weekly	Biweekly	Monthly	Yearly
R3	1248.33	1261.50	1278.50	1292.25	1428.75
R2	1241.92	1248.75	1260.25	1271.25	1324.25
R1	1229.33	1241.50	1247.25	1252.75	1269.00
PPT	1222.92	1228.75	1229.00	1231.75	1164.50
S1	1210.33	1221.50	1216.00	1213.25	1109.25
S2	1203.92	1208.75	1197.75	1192.25	1004.75
S3	1191.33	1201.50	1184.75	1173.75	949.50

\* Blue color number turns into major resistance levels.

\* Green color number currently acts as a support level.

### 3. FOCUS NUMBERS (intra-day Position trading)

Sell levels	Buying levels
1224.25 (First Sell#)	1218.50 (First Buy #) *Dual number
1228.25 (Second Sell#)	1205.25 (second Buy #)

#### Trading rules for intra-day position trading:

1. **Dual number** could be used for long position when price trades above it. Also it could be used for short position when price trades below it. Inexperienced traders should not trade this number.
2. For intra-day position traders, you have the potential to capture a big move if you are trading in the right direction. If you get stopped out two times in one direction, especially during a strong trend day. **STOP** trading for rest of the day.

3. If you are a scalping trader, **DON'T** hold your position too long if you trading against the direction of a strong trend.
4. If you are in right direction of the market movement, you can hold your position until price hit opposite major resistance or support level target.

#### 4. MAJOR RESISTANCE AND SUPPORT LEVELS FOR TODAY

<b>Resistance</b>	1218.75	1221.00	1224.25	1226.75	1228.25
-------------------	---------	---------	---------	---------	---------

<b>Support</b>	1216.00	1214.75	1210.75	1204.75	1199.50
----------------	---------	---------	---------	---------	---------

#### 5. COMMENTARY

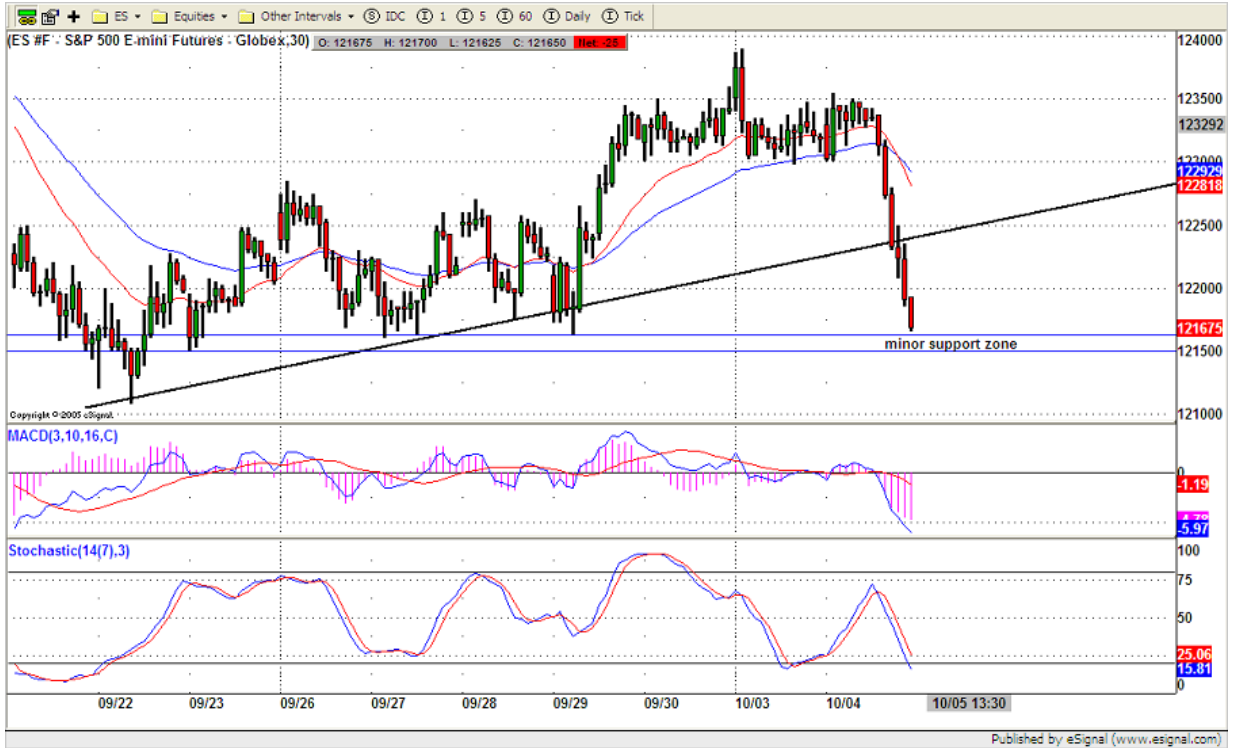
Second trading day of Oct, finally market got everyone to agree to sell. Market was tanking in the middle of trading day and closed at low of its range. Yesterday downside movement discouraged bulls when ES broke down 1225 level. It also meant current short term rally ended. Therefore at the end of day, market sold off. Today, Market could bounce a little and consolidate itself to smooth off yesterday's oversold condition. Breakdown 1210 level, we will see another big sell off day



#### 6. TODAY'S TRADING

On 15min chart, ES was oversold. Also it almost met its minor support zone from 1215 to 1216 level. If this morning, ES can hold itself above

that support zone, price could bounce to its 20ema line. But every bounce will attract shorts step in.



**7. PREDICTION FOR TODAY'S MOVEMENT**

**Current (interval=1.95)**

1238.28	+2/8
1236.33	+1/8
1234.38	8/8
1232.42	7/8
1230.47	6/8
1228.52	5/8
1226.56	4/8
1224.61	3/8
1222.66	2/8
1220.70	1/8
1218.75	0/8
1216.80	-1/8
1214.84	-2/8

**Up (Interval=1.95)**

1238.28	+2/8
1236.33	+1/8
1234.38	8/8
1232.42	7/8
1230.47	6/8
1228.52	5/8
1226.56	4/8
1224.61	3/8
1222.66	2/8
1220.70	1/8
1218.75	0/8
1216.80	-1/8
1214.84	-2/8

**Down (Interval=0.95)**

1216.80	+2/8
1215.82	+1/8
1214.84	8/8
1213.87	7/8
1212.89	6/8
1211.91	5/8
1210.94	4/8
1209.96	3/8
1208.98	2/8
1208.01	1/8
1207.03	0/8
1206.05	-1/8
1205.08	-2/8

Copyright 2004 by Natusur Inc. All rights are reserved and Printed in Canada. Photocopying and further distribution of this newsletter are strictly prohibited. Information, opinion, research, and commentary contained herein is obtained from sources believed to be reliable; their reliability, however, cannot be guaranteed. The maxim of Caveat Emptor applies – let the buyer beware! This newsletter is for education purpose only. It doesn't provide for individual investment advice, or act as an investment advisor, or individually advocate the purchase or sale of any security or investment. In making any investment decision, you will rely solely on your own review and examination of the facts and the records relating to such investments. Past performance of our recommendations is not an indication of future performance. We shall have no liability of whatever nature in respect of any claim, damages, loss or expense arising out of or in connection with the reliance by you on the contents of our newsletter, any promotion, published material, alert or update.

## 8. OTHER INDICATORS

NatRSI	ATR 5	ATR 10	Waist number
0.06	12.40	11.63	1225.00
oversold			

- NatRSI >80-90                      overbought  
 NatRSI >30 or <70                neutral  
 NatRSI <20                            oversold
- ATR** (Average true range) can be used for predicting intra-day's high and low.
- Waist number** is MMLine number, acting pivot number, can be used for support or resistance. Price trades above its level, market is bullish; price trades below its level, market is bearish.

## 9. WEEKLY ECONOMIC CALENDAR

Date	ET	Release	For	Consensus	Prior
Oct 05	10:00	ISM Services	Sep	59.7	65.0
Oct 05	10:30	Crude Inventories			
Oct 06	08:30	Initial Claims	10/01	400K	356K
Oct 07	08:30	Nonfarm Payrolls	Sep	-172K	169K
Oct 07	08:30	Unemployment Rate	Sep	5.0%	4.9%
Oct 07	08:30	Hourly Earnings	Sep	0.2%	0.1%
Oct 07	08:30	Average Workweek	Sep	33.7	33.7
Oct 07	10:00	Wholesale Inventories	Aug	0.4%	-0.1%
Oct 07	15:00	Consumer Credit	Aug	\$5.0B	\$4.4B