

Naturus



Daily trading plan for Sept. 12, 2005

1. PIVOTS FOR ESZ5

	Daily	Weekly	Biweekly	Monthly	Yearly
R3	1261.75	1284.75	1314.08	1293.17	1428.75
R2	1256.00	1267.50	1282.17	1270.83	1324.25
R1	1252.25	1258.00	1265.33	1246.17	1269.00
PPT	1246.50	1240.75	1233.42	1223.83	1164.50
S1	1242.75	1231.25	1216.58	1199.17	1109.25
S2	1237.00	1214.00	1184.67	1176.83	1004.75
S3	1233.25	1204.50	1167.83	1152.17	949.50

* Blue color number turns into major resistance levels.

* Green color number currently acts as a support level.

2. FOCUS NUMBERS (intra-day Position trading)

Sell levels	Buying levels
1248.25 (First Sell#) *dual number	1242.50 (First Buy #)
1256.25 (Second Sell#)	1240.75 (second Buy #)
1263.75 (Third Sell #)	1235.00 (Third Buy #)

Trading rules for intra-day position trading:

1. **Dual number** could be used for long position when price trades above it. Also it could be used for short position when price trades below it. Inexperienced traders should not trade this number.
2. For intra-day position traders, you have the potential to capture a big move if you are trading in the right direction. If you get stopped out two times in one direction, especially during a strong trend day. **STOP** trading for rest of the day.
3. If you are a scalping trader, **DON' T** hold your position too long if you trading against the direction of a strong trend.
4. If you are in right direction of the market movement, you can hold your position until price hit opposite major resistance or support level target.

3. MAJOR RESISTANCE AND SUPPORT LEVELS FOR TODAY

Resistance	1252.25	1256.75	1261.25	1263.75	1265.25
Support	1246.50	1244.75	1242.75	1240.75	1236.75

4. COMMENTARY

Last week market ran up and closed right on yearly high level at 1248.50. It forms a Rising Bearish Wedge pattern. Because S&P 500 cash still hasn't reach its Aug.3 high at 1245.86 level yet, we may see ES goes a little further than 1248.50 level. If that is the top, it could a major fifth wave top (E). When the Wedge is rising, it signals the end of a Bull run. The major resistance zone is around 1264-1274 area.

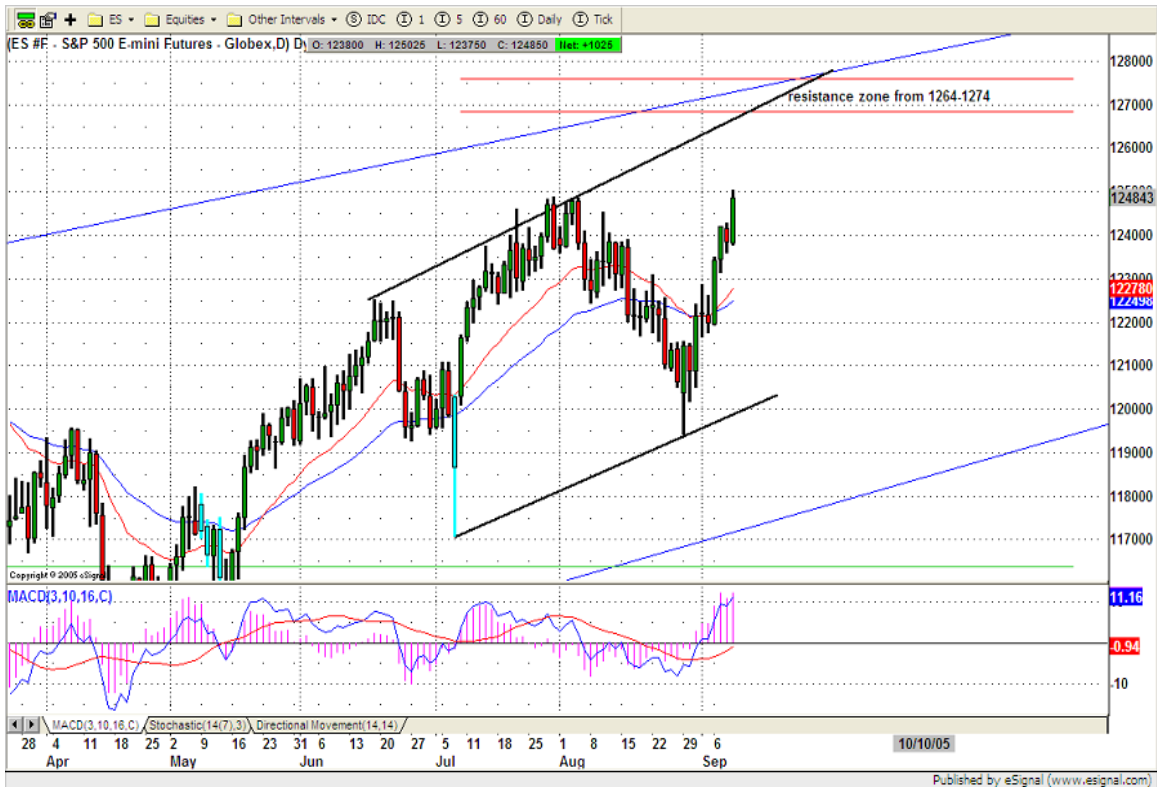


Look at the below daily chart of ES. So far, ES formed 2 tops around 1248.50 level, but Dec. contract's high was actually around 1253.50. ES may run up to that level before it pulls back to retest its breakout point level around 1242.

MACD and SST approach to their overbought level on daily chart, But they haven't reached their extreme level yet. That means market could trade its high level range for next several day.

Watch for divergence signal on those indicators. Selling setting may kick in soon.

Change in trend date is Sept.16, I expect we could see top around that day. Also this week is option expiration week. High volatility in the market should be expected.



5. TODAY'S TRADING

On 60min chart, ES continues to push itself going higher. As long as 1242 level holds, price could either consolidate at top daily range or continue to squeeze shorts to push price higher into its major resistance zone area.

Watch S&P cash around 1245.86 level carefully. Only cash market doesn't move higher level will prevent ES from moving up.

Today's trading range could be from 1256.25 - 1241.



6. PREDICTION FOR TODAY'S MOVEMENT

Current (interval=0.95)

1251.95	+2/8
1250.98	+1/8
1250.00	8/8
1249.02	7/8
1248.05	6/8
1247.07	5/8
1246.09	4/8
1245.12	3/8
1244.14	2/8
1243.16	1/8
1242.19	0/8
1241.21	-1/8
1240.23	-2/8

Up (Interval=1.95)

1269.53	+2/8
1267.58	+1/8
1265.63	8/8
1263.67	7/8
1261.72	6/8
1259.77	5/8
1257.81	4/8
1255.86	3/8
1253.91	2/8
1251.95	1/8
1250.00	0/8
1248.05	-1/8
1246.09	-2/8

Down (Interval=1.95)

1253.91	+2/8
1251.95	+1/8
1250.00	8/8
1248.05	7/8
1246.09	6/8
1244.14	5/8
1242.19	4/8
1240.23	3/8
1238.28	2/8
1236.33	1/8
1234.38	0/8
1232.42	-1/8
1230.47	-2/8

7. OTHER INDICATORS

NatRSI	ATR 5	ATR 10	Waist number
0.89	8.50	10.58	1244.75
overbought			

- NatRSI >80-90 overbought
 NatRSI >30 or <70 neutral
 NatRSI <20 oversold
- ATR** (Average true range) can be used for predicting intra-day's high and low.
- Waist number** is MMLine number, acting pivot number, can be used for support or resistance. Price trades above its level, market is bullish; price trades below its level, market is bearish.

8. WEEKLY ECONOMIC CALENDAR

Date	ET	Release	For	Consensus	Prior
Sep 13	08:30	Trade Balance	Jul	-\$59.8B	-\$58.8B
Sep 13	08:30	PPI	Aug	0.7%	1.0%
Sep 13	08:30	Core PPI	Aug	0.1%	0.4%
Sep 13	14:00	Treasury Budget	Aug	-\$47.8B	-\$41.1B
Sep 14	08:30	Retail Sales	Aug	-1.1%	1.8%
Sep 14	08:30	Retail Sales ex-auto	Aug	0.5%	0.3%
Sep 14	09:15	Industrial Production	Aug	0.3%	0.1%
Sep 14	09:15	Capacity Utilization	Aug	79.8%	79.7%
Sep 15	08:30	NY Empire State Index	Sep	17.5	23.0
Sep 15	08:30	CPI	Aug	0.5%	0.5%
Sep 15	08:30	Core CPI	Aug	0.2%	0.1%
Sep 15	08:30	Initial Claims	09/10	NA	319K
Sep 15	08:30	Business Inventories	Jul	0.3%	0.0%
Sep 15	12:00	Philadelphia Fed	Sep	14.5	17.5
Sep 16	08:30	Current Account	Q2	-\$192.9B	-\$195.1B
Sep 16	09:45	Mich Sentiment-Prel.	Sep	86.0	89.1