

Naturus



Daily trading plan for Aug. 19, 2005

1. PIVOTS FOR ESU5

	Daily	Weekly	Biweekly	Monthly	Yearly
R3	1232.25	1263.75	1269.17	1323.25	1428.75
R2	1228.50	1254.50	1258.83	1285.75	1324.25
R1	1224.75	1242.75	1244.92	1261.25	1269.00
PPT	1221.00	1233.50	1234.58	1223.75	1164.50
S1	1217.25	1221.75	1220.67	1199.25	1109.25
S2	1213.50	1212.50	1210.33	1161.75	1004.75
S3	1209.75	1200.75	1196.42	1137.25	949.50

* Blue color number turns into major resistance levels.

* Green color number currently acts as a support level.

2. FOCUS NUMBERS (intra-day Position trading)

Sell levels	Buying levels
1227.50 (First Sell#)	1214.25 (First Buy #)
1231.25 (Second Sell#)	1207.00 (second Buy #)

Trading rules for intra-day position trading:

1. **Dual number** could be used for long position when price trades above it. Also it could be used for short position when price trades below it. Inexperienced traders should not trade this number.
2. For intra-day position traders, you have the potential to capture a big move if you are trading in the right direction. If you get stopped out two times in one direction, especially during a strong trend day. **STOP** trading for rest of the day.
3. If you are a scalping trader, **DON'T** hold your position too long if you trading against the direction of a strong trend.
4. If you are in right direction of the market movement, you can hold your position until price hit opposite major resistance or support level target.

3. MAJOR RESISTANCE AND SUPPORT LEVELS FOR TODAY

Resistance	1224.75	1227.50	1230.25	1232.25	1234.50
-------------------	---------	---------	---------	---------	---------

Support	1216.75	1214.25	1210.75	1209.00	1207.00
----------------	---------	---------	---------	---------	---------

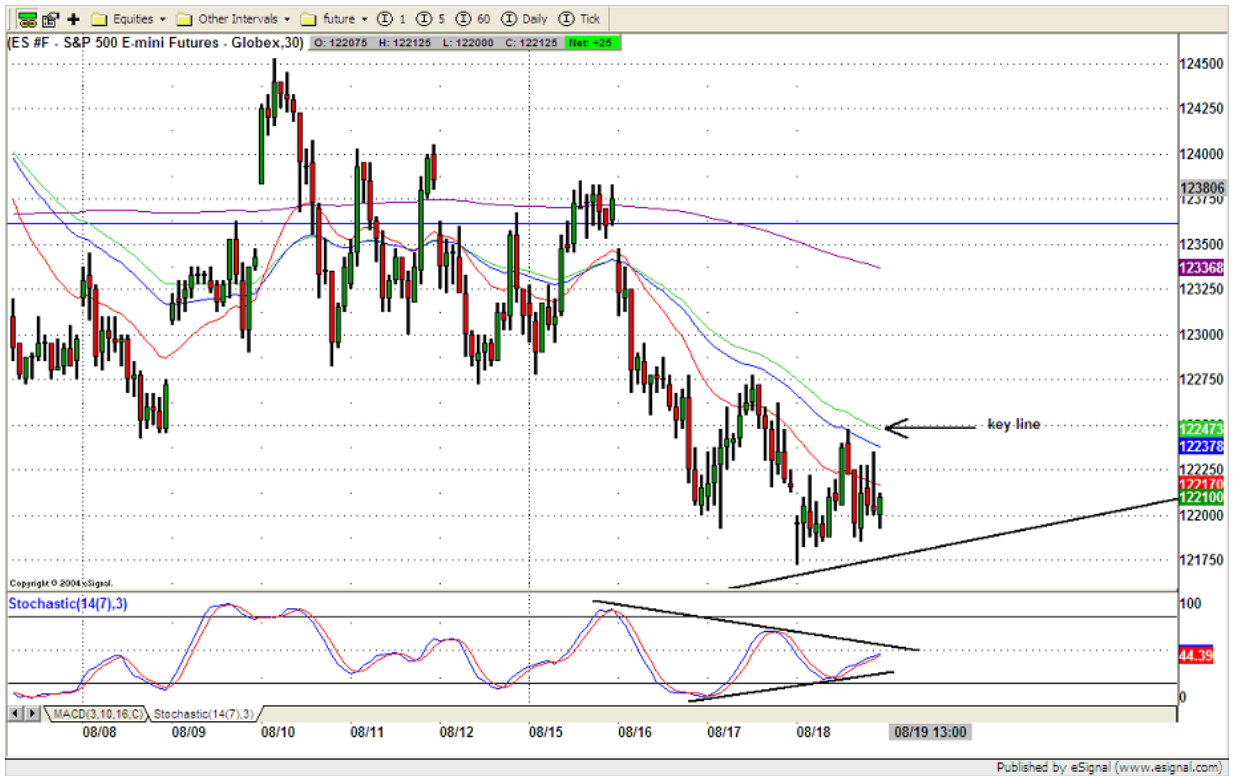
4. COMMENTARY

ES made its indecision day. Both sides fight to the end of day. That is option expiration game. Based on the daily chart, ES hit its support level and hang there. Indicators show ES is approaching its oversold area. We may see some bounce next week.



5. TODAY'S TRADING

On 30min chart, ES continued to fight its 20ema line. Slow Stochastic indicator formed triangle pattern. Watch for breakout in either direction. (Usually price will follow that breakout direction). Breakout 1225 level, ES could pop into 1233 level for max correction. Breakdown 1217 level, price could dip into 1208 level or further down to 1195 in the coming weeks.



6. PREDICTION FOR TODAY'S MOVEMENT

Current (interval=0.95)

1228.52	+2/8
1227.54	+1/8
1226.56	8/8
1225.59	7/8
1224.61	6/8
1223.63	5/8
1222.66	4/8
1221.68	3/8
1220.70	2/8
1219.73	1/8
1218.75	0/8
1217.77	-1/8
1216.80	-2/8

Up (Interval=0.95)

1232.42	+2/8
1231.45	+1/8
1230.47	8/8
1229.49	7/8
1228.52	6/8
1227.54	5/8
1226.56	4/8
1225.59	3/8
1224.61	2/8
1223.63	1/8
1222.66	0/8
1221.68	-1/8
1220.70	-2/8

Down (Interval=1.95)

1222.66	+2/8
1220.70	+1/8
1218.75	8/8
1216.80	7/8
1214.84	6/8
1212.89	5/8
1210.94	4/8
1208.98	3/8
1207.03	2/8
1205.08	1/8
1203.13	0/8
1201.17	-1/8
1199.22	-2/8

Copyright 2004 by Natusus Inc. All rights are reserved and Printed in Canada. Photocopying and further distribution of this newsletter are strictly prohibited. Information, opinion, research, and commentary contained herein is obtained from sources believed to be reliable; their reliability, however, cannot be guaranteed. The maxim of Caveat Emptor applies – let the buyer beware! This newsletter is for education purpose only. It doesn't provide for individual investment advice, or act as an investment advisor, or individually advocate the purchase or sale of any security or investment. In making any investment decision, you will rely solely on your own review and examination of the facts and the records relating to such investments. Past performance of our recommendations is not an indication of future performance. We shall have no liability of whatever nature in respect of any claim, damages, loss or expense arising out of or in connection with the reliance by you on the contents of our newsletter, any promotion, published material, alert or update.

7. OTHER INDICATORS

NatRSI	ATR 5	ATR 10	Waist number
0.62	10.20	10.45	1220.13
neutral			

1. NatRSI >80-90 overbought
 NatRSI >30 or <70 neutral
 NatRSI <20 oversold
2. **ATR** (Average true range) can be used for predicting intra-day's high and low.
3. **Waist number** is MMline number, acting pivot number, can be used for support or resistance. Price trades above its level, market is bullish; price trades below its level, market is bearish.

8. WEEKLY ECONOMIC CALENDAR