

# Naturus



## Daily trading plan for July 29, 2005

### 1. PIVOTS FOR ESU5

	Daily	Weekly	Biweekly	Monthly	Yearly
R3	1260.75	1259.33	1269.33	1252.08	1428.75
R2	1254.50	1249.67	1254.67	1238.67	1324.25
R1	1250.75	1243.33	1245.83	1219.17	1269.00
PPT	1244.50	1233.67	1231.17	1205.92	1164.50
S1	1240.75	1227.33	1222.33	1186.58	1109.25
S2	1234.50	1217.67	1207.67	1173.17	1004.75
S3	1230.75	1211.33	1198.83	1153.83	949.50

\* Blue color number turns into major resistance levels.

\* Green color number currently acts as a support level.

### 2. FOCUS NUMBERS (intra-day Position trading)

Sell levels	Buying levels
1246.50 (First Sell#) *Dual number	1240.50-1239 (First Buy #)
1255.25 (Second Sell#)	1230.75 (second Buy #)

#### Trading rules for intra-day position trading:

1. **Dual number** could be used for long position when price trades above it. Also it could be used for short position when price trades below it. Inexperienced traders should not trade this number.
2. For intra-day position traders, you have the potential to capture a big move if you are trading in the right direction. If you get stopped out two times in one direction, especially during a strong trend day. **STOP** trading for rest of the day.
3. If you are a scalping trader, **DON'T** hold your position too long if you trading against the direction of a strong trend.
4. If you are in right direction of the market movement, you can hold your position until price hit opposite major resistance or support level target.

### 3. MAJOR RESISTANCE AND SUPPORT LEVELS FOR TODAY

<b>Resistance</b>	1248.75	1250.70	1255.25	1259.50	1263.67
-------------------	---------	---------	---------	---------	---------

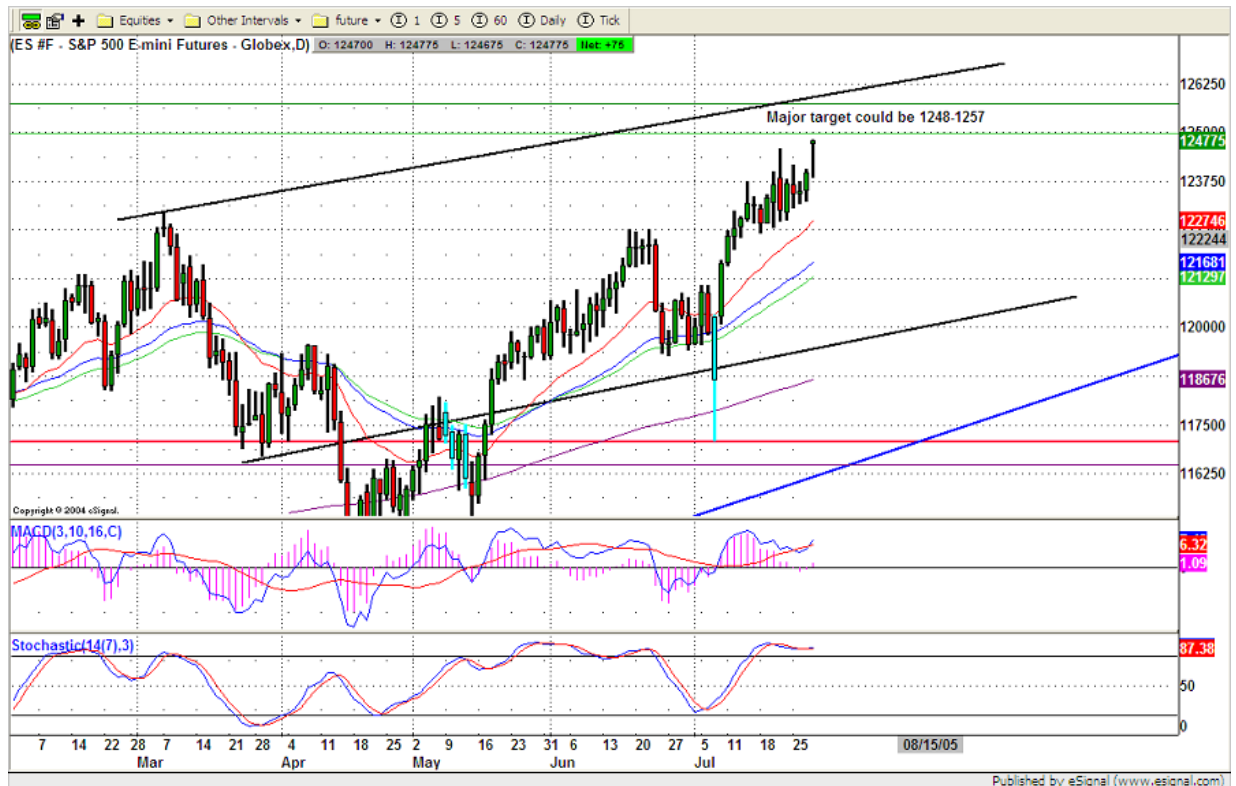
<b>Support</b>	1244.50	1242.50	1240.50	1239.00	1236
----------------	---------	---------	---------	---------	------

### 4. COMMENTARY

ES closed up at the high trading range again after it closed its gap in the early morning trading session. Every time the high ES made caused by shorts squeeze. Shorts keep shorting and keep stopping out. This situation often happens before market is going to change its direction.

Today is last trading day of July. Window dressing may continue going on.

Daily indicators work out of their bearish territory. That means ES still has a chance to push up to 1257 level before it turns down again. Daily top band of uptrend channel still hasn't been reached yet.



### 5. TODAY'S TRADING

On 30min chart, ES hit its short term top band of uptrend channel. When ES completed its bullish pattern around 1246.50 level, it caused stop running up 1248 level. This action leads excitement on MMline to push through +2/8<sup>th</sup> line. Today 1246.50 is key level. If 1246 continue to be held, price will be choppy along to 1257 level.



**6. PREDICTION FOR TODAY'S MOVEMENT**

**Current (interval=1.95)**

1253.91	+2/8
1251.95	+1/8
1250.00	8/8
1248.05	7/8
1246.09	6/8
1244.14	5/8
1242.19	4/8
1240.23	3/8
1238.28	2/8
1236.33	1/8
1234.38	0/8
1232.42	-1/8
1230.47	-2/8

**Up (Interval=1.95)**

1269.53	+2/8
1267.58	+1/8
1265.63	8/8
1263.67	7/8
1261.72	6/8
1259.77	5/8
1257.81	4/8
1255.86	3/8
1253.91	2/8
1251.95	1/8
1250.00	0/8
1248.05	-1/8
1246.09	-2/8

**Down (Interval=0.95)**

1248.05	+2/8
1247.07	+1/8
1246.09	8/8
1245.12	7/8
1244.14	6/8
1243.16	5/8
1242.19	4/8
1241.21	3/8
1240.23	2/8
1239.26	1/8
1238.28	0/8
1237.30	-1/8
1236.33	-2/8

Copyright 2004 by Natusus Inc. All rights are reserved and Printed in Canada. Photocopying and further distribution of this newsletter are strictly prohibited. Information, opinion, research, and commentary contained herein is obtained from sources believed to be reliable; their reliability, however, cannot be guaranteed. The maxim of Caveat Emptor applies – let the buyer beware! This newsletter is for education purpose only. It doesn't provide for individual investment advice, or act as an investment advisor, or individually advocate the purchase or sale of any security or investment. In making any investment decision, you will rely solely on your own review and examination of the facts and the records relating to such investments. Past performance of our recommendations is not an indication of future performance. We shall have no liability of whatever nature in respect of any claim, damages, loss or expense arising out of or in connection with the reliance by you on the contents of our newsletter, any promotion, published material, alert or update.

## 7. OTHER INDICATORS

<b>NatRSI</b>	<b>ATR 5</b>	<b>ATR 10</b>	<b>Waist number</b>
<b>0.79</b>	<b>8.95</b>	<b>8.98</b>	<b>1244.13</b>
overbought			

- NatRSI >80-90                      overbought  
 NatRSI >30 or <70                neutral  
 NatRSI <20                            oversold
- ATR** (Average true range) can be used for predicting intra-day's high and low.
- Waist number** is MMLine number, acting pivot number, can be used for support or resistance. Price trades above its level, market is bullish; price trades below its level, market is bearish.

## 8. WEEKLY ECONOMIC CALENDAR

Date	ET	Release	For	Actual	Consensus	Prior
Jul 29	08:30	GDP-Adv.	Q2		3.5%	3.8%
Jul 29	08:30	Chain Deflator-Adv.	Q2		3.0%	2.9%
Jul 29	08:30	Employment Cost Index	Q2		0.8%	0.7%
Jul 29	09:45	Mich Sentiment-Rev.	Jul		96.3	96.5
Jul 29	10:00	Chicago PMI	Jul		54.8	53.6