

Naturus



Daily trading plan for July 11, 2005

1. PIVOTS FOR ESU5

	Daily	Weekly	Biweekly	Monthly	Yearly
R3	1238.75	1258.08	1251.67	1252.08	1428.75
R2	1228.00	1237.67	1238.33	1238.67	1324.25
R1	1222.25	1227.08	1219.17	1219.17	1269.00
PPT	1211.50	1206.67	1205.83	1205.92	1164.50
S1	1205.75	1196.08	1186.67	1186.58	1109.25
S2	1195.00	1175.67	1173.33	1173.17	1004.75
S3	1189.25	1165.08	1154.17	1153.83	949.50

* Blue color number turns into major resistance levels.

* Green color number currently acts as a support level.

2. FOCUS NUMBERS (intra-day Position trading)

Sell levels	Buying levels
1216.25 (First Sell#) *dual number	1201.75-1201 (First Buy #)
1232.00 (Second Sell#)	1190.25 (second Buy #)

Trading rules for intra-day position trading:

1. **Dual number** could be used for long position when price trades above it. Also it could be used for short position when price trades below it. Inexperienced traders should not trade this number.
2. For intra-day position traders, you have the potential to capture a big move if you are trading in the right direction. If you get stopped out two times in one direction, especially during a strong trend day. **STOP** trading for rest of the day.
3. If you are a scalping trader, **DON'T** hold your position too long if you trading against the direction of a strong trend.
4. If you are in right direction of the market movement, you can hold your position until price hit opposite major resistance or support level target.

3. MAJOR RESISTANCE AND SUPPORT LEVELS FOR TODAY

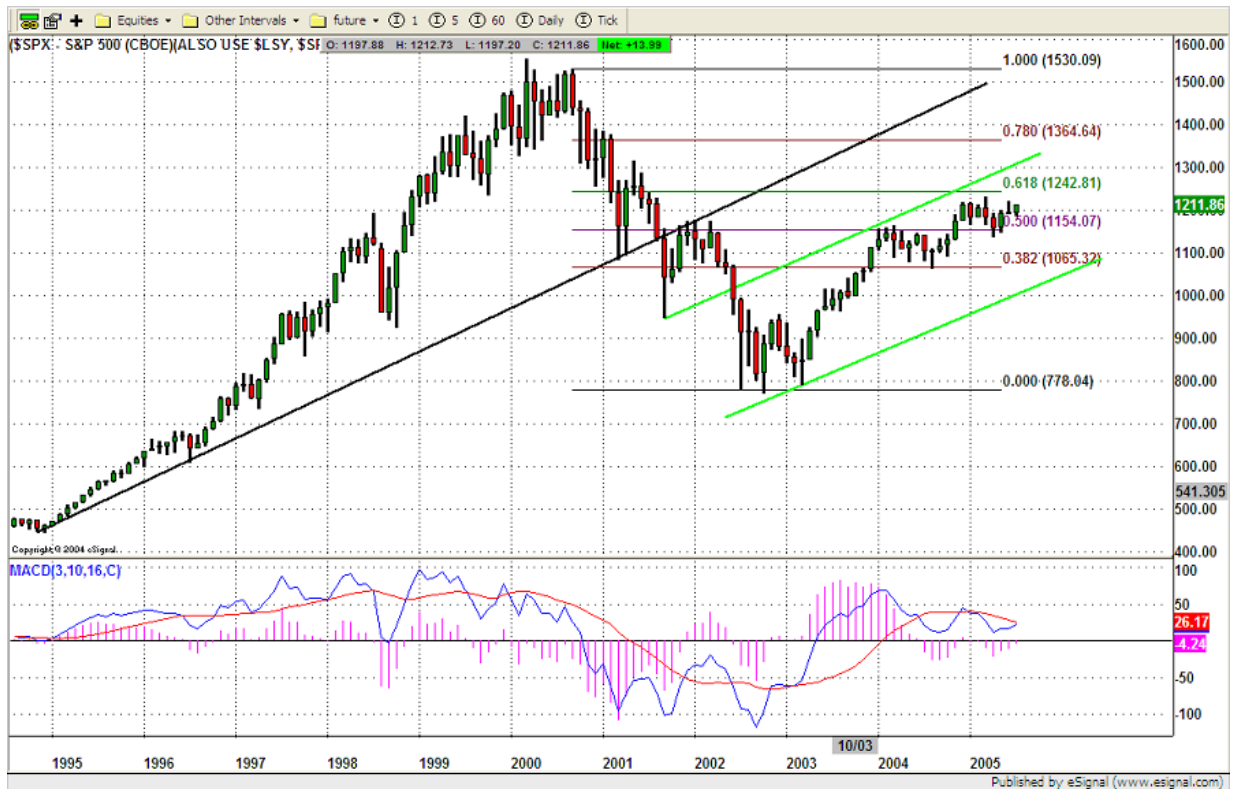
Resistance	1219	1222.75	1228.75	1232.50	1234.25
-------------------	------	---------	---------	---------	---------

Support	1211.50	1209.75	1207.25	1205.75	1201.75
----------------	---------	---------	---------	---------	---------

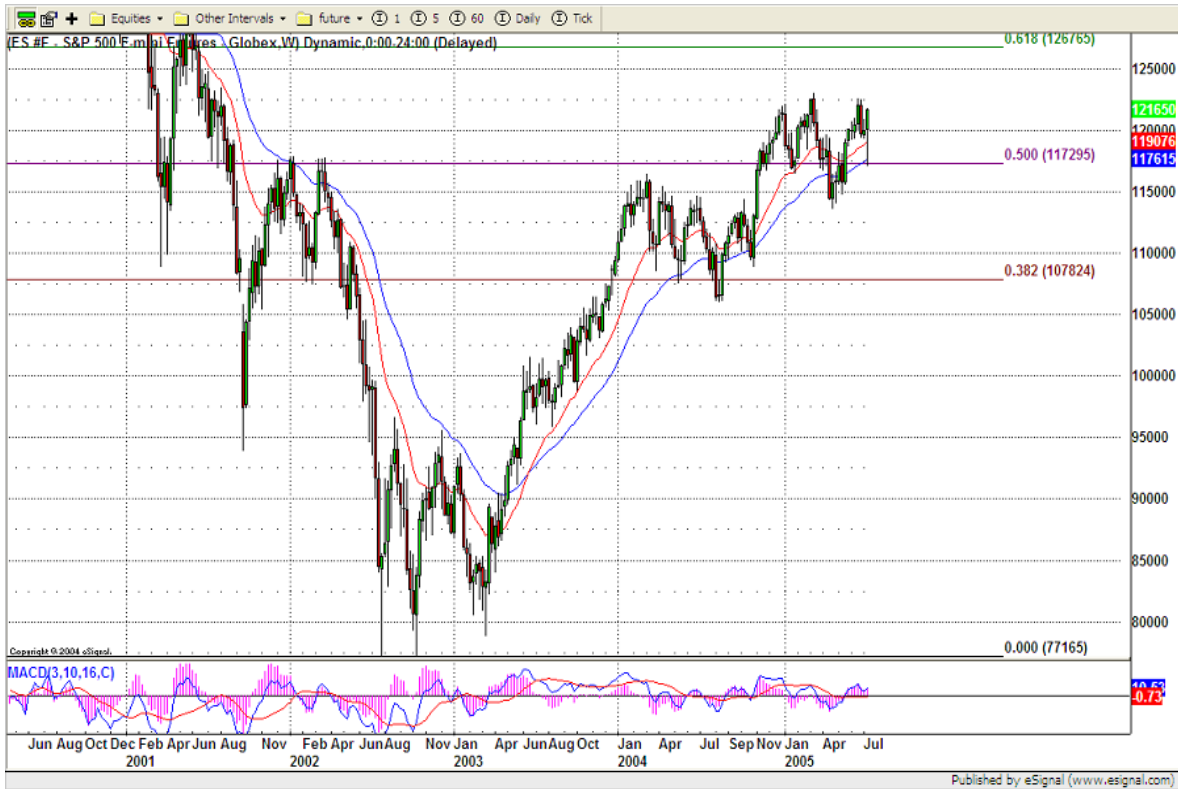
4. COMMENTARY

Last week, Wall Street experienced a significant rally on Thursday and Friday. NASDAQ led the advance and reached its highest level since January, while S&P500 also posted 17 points gain on Friday.

On Monthly chart of S&P500 cash (SPX), two years ago, it broke its major long term support level (Black line). But in an immediate term, SPX is in uptrend channel (Green lines), and tries to achieve its bullish symmetrical pattern on the upside. If nothing happens in the late coming month of this year, SPX could complete its monthly bullish symmetrical pattern around 1305 level, which is almost closed to 70% retracement from major low to major high.



Let us look at ES weekly chart, price holds above its 20 and 40 weeks average lines. Even volume showed at low, price managed to close above 20ema line last Friday. If this week, ES can hold above 1210 level, it is very likely that 1235 level will be tested.

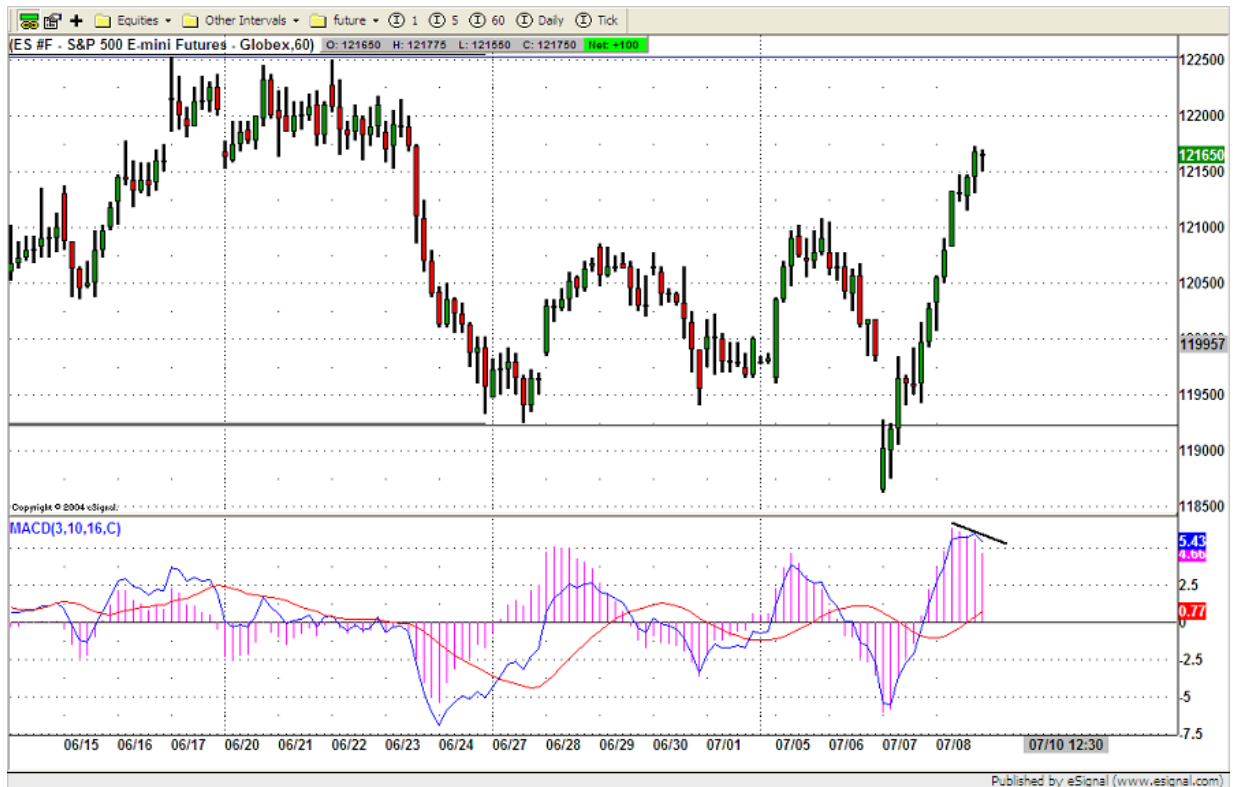


On ES daily chart, there is inverted H&S pattern; neckline could be around 1220 level. If ES breaks out 1225 level, price could pop into 1235 level or further higher around 1245 level.



5. TODAY'S TRADING

Based on 60 mins chart, ES had very strong movement on Friday, but in last four hours trading, volume had decreased. That means that ES could pullback on Monday's trading. Resistance level is 1225, and major support level is 1193/1192 area. First support level is around 1210 area. If ES can hold 1210 level, I expect that ES could consolidate itself within 1210 to 1225 range. If ES can't hold 1210 level, next support level is 1205 area.



6. PREDICTION FOR TODAY'S MOVEMENT

Current (interval=1.95)

1222.66	+2/8
1220.70	+1/8
1218.75	8/8
1216.80	7/8
1214.84	6/8
1212.89	5/8
1210.94	4/8
1208.98	3/8
1207.03	2/8
1205.08	1/8
1203.13	0/8
1201.17	-1/8
1199.22	-2/8

Up (Interval=1.95)

1238.28	+2/8
1236.33	+1/8
1234.38	8/8
1232.42	7/8
1230.47	6/8
1228.52	5/8
1226.56	4/8
1224.61	3/8
1222.66	2/8
1220.70	1/8
1218.75	0/8
1216.80	-1/8
1214.84	-2/8

Down (Interval=1.95)

1222.66	+2/8
1220.70	+1/8
1218.75	8/8
1216.80	7/8
1214.84	6/8
1212.89	5/8
1210.94	4/8
1208.98	3/8
1207.03	2/8
1205.08	1/8
1203.13	0/8
1201.17	-1/8
1199.22	-2/8

7. OTHER INDICATORS

NatRSI	ATR 5	ATR 10	Waist number
0.90	13.40	11.43	1209.88
overbought			

- NatRSI >80-90 overbought
 NatRSI >30 or <70 neutral
 NatRSI <20 oversold
- ATR** (Average true range) can be used for predicting intra-day's high and low.
- Waist number** is MMLine number, acting pivot number, can be used for support or resistance. Price trades above its level, market is bullish; price trades below its level, market is bearish.

8. WEEKLY ECONOMIC CALENDAR

Date	ET	Release	For	Consensus	Prior
July 13	8:30 am	Export Prices (Ex. Ag)	June	NA	-0.4%
July 13	8:30 am	Import Prices (Ex. Oil)	June	NA	-0.3%
July 13	8:30 am	Trade Balance	May	-\$57B	-\$57B
July 13	2:00 pm	Treasury Budget	June	\$28B	\$19.1B
July 14	8:30 am	Retail Sales	June	0.9%	-0.5%
July 14	8:30 am	Retail Sales (ex auto)	June	0.5%	-0.2%
July 14	8:30 am	CPI	June	0.3%	-0.1%
July 14	8:30 am	Core CPI	June	0.2%	0.1%

July 14	8:30 am	Initial Jobless Claims	7/9	NA	319K
July 15	8:30 am	NY Empire State Index	July	9.0	11.6
July 15	8:30 am	Business Inventories	May	0.4%	0.3%
July 15	8:30 am	PPI	June	0.4%	-0.6%
July 15	8:30 am	Core PPI	June	0.1%	0.1%
July 15	9:15 am	Industrial Production	June	0.4%	0.4%
July 15	9:15 am	Capacity Utilization	June	79.6%	79.4%
July 15	9:45 am	Michigan Consumer Sentiment (Prelim)	Jul	94.5	96.0