

# Naturus



## Daily trading plan for July 1, 2005

### 1. PIVOTS FOR ESU5

	Daily	Weekly	Biweekly	Monthly	Yearly
R3	1217.92	1247.83	1248.25	1266.67	1428.75
R2	1212.83	1236.42	1236.75	1233.67	1324.25
R1	1204.17	1216.08	1216.25	1212.92	1269.00
PPT	1199.08	1204.67	1204.75	1179.83	1164.50
S1	1190.42	1184.33	1184.25	1159.17	1109.25
S2	1185.33	1172.92	1172.75	1126.08	1004.75
S3	1176.67	1152.58	1152.25	1105.42	949.50

\* Blue color number turns into major resistance levels.

\* Green color number currently acts as a support level.

### 2. FOCUS NUMBERS (intra-day Position trading)

Sell levels	Buying levels
1203.75 (First Sell#)	1198.25 (First Buy #) *dual number
1205.25 (Second Sell#)	1185.75 (second Buy #)

#### Trading rules for intra-day position trading:

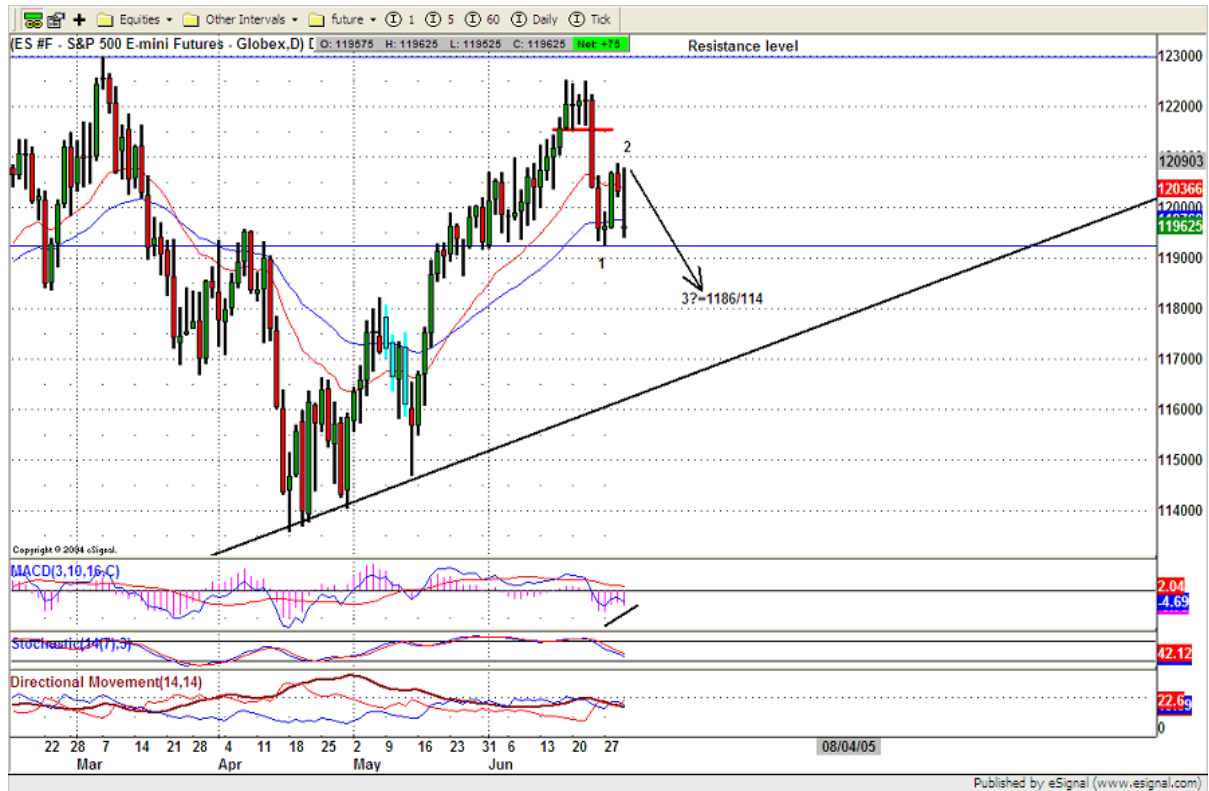
- **Dual number** could be used for long position when price trades above it. Also it could be used for short position when price trades below it. Inexperienced traders should not trade this number.
- For intra-day position traders, you have the potential to capture a big move if you are trading in the right direction. If you get stopped out two times in one direction, especially during a strong trend day. **STOP** trading for rest of the day.
- If you are a scalping trader, **DON'T** hold your position too long if you trading against the direction of a strong trend.
- If you are in right direction of the market movement, you can hold your position until price hit opposite major resistance or support level target.

### 3. MAJOR RESISTANCE AND SUPPORT LEVELS FOR TODAY

<b>Resistance</b>	1207.50	1208.75	1212	1214.25	1215.75
<b>Support</b>	1201..75	1200.50	1198.25	1196.25	1193.50

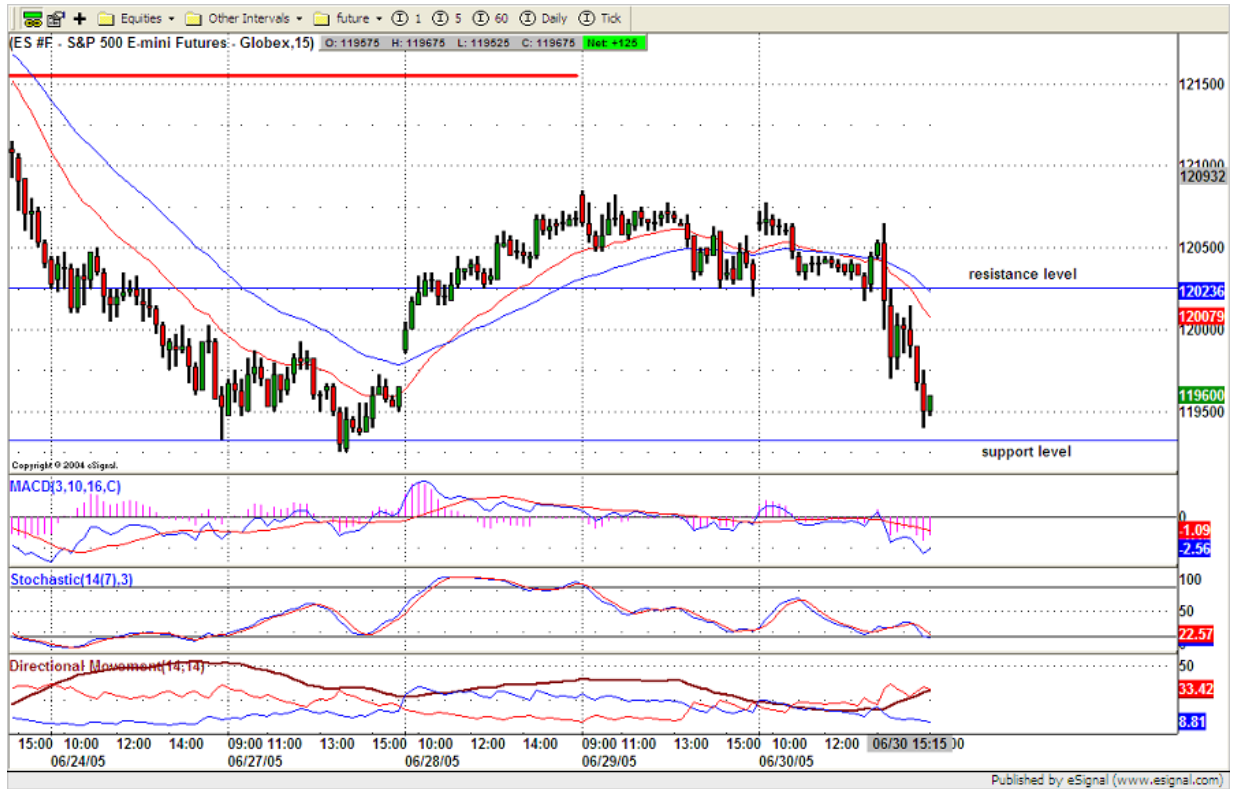
### 4. COMMENTARY

Fed increased interest rate again. ES sold off after Fed announcement. If ES lose its major support level around 1191 in the coming days, next downside target is 1186-1184 level. After that, short term final target could be around 1176 level.



### 5. TODAY'S TRADING

Based on 15 mins chart, ES could complete its bearish symmetrical pattern around 1192 level. If 1192/1192 level holds today, ES could bounce to retest 1198 level.



## 6. PREDICTION FOR TODAY'S MOVEMENT

### Current (interval=0.95)

1214.84	+2/8
1212.89	+1/8
1210.94	8/8
1208.98	7/8
1207.03	6/8
1205.08	5/8
1203.13	4/8
1201.17	3/8
1199.22	2/8
1197.27	1/8
1195.31	0/8
1193.36	-1/8
1191.41	-2/8

### Up (Interval=1.95)

1207.03	+2/8
1205.08	+1/8
1203.13	8/8
1201.17	7/8
1199.22	6/8
1197.27	5/8
1195.31	4/8
1193.36	3/8
1191.41	2/8
1189.45	1/8
1187.50	0/8
1185.55	-1/8
1183.59	-2/8

### Down (Interval=1.95)

1207.03	+2/8
1205.08	+1/8
1203.13	8/8
1201.17	7/8
1199.22	6/8
1197.27	5/8
1195.31	4/8
1193.36	3/8
1191.41	2/8
1189.45	1/8
1187.50	0/8
1185.55	-1/8
1183.59	-2/8

## 7. OTHER INDICATORS

NatRSI	ATR 5	ATR 10	Waist number
0.10	9.45	9.68	1200.88
oversold			

- NatRSI >80-90                      overbought  
 NatRSI >30 or <70                neutral  
 NatRSI <20                            oversold
- ATR** (Average true range) can be used for predicting intra-day's high and low.
- Waist number** is MMLine number, acting pivot number, can be used for support or resistance. Price trades above its level, market is bullish; price trades below its level, market is bearish.

## 8. WEEKLY ECONOMIC CALENDAR

Date	ET	Release	For	Consensus	Prior
Jul 01	09:45	Mich Sentiment-Rev.	Jun	94.8	94.8
Jul 01	10:00	Construction Spending	May	0.5%	0.5%
Jul 01	10:00	ISM Index	Jun	51.5	51.4