

# Naturus



## Daily trading plan for June 8, 2005

### 1. PIVOTS FOR ESM5

	Daily	Weekly	Biweekly	Monthly	Yearly
R3	1218.91	1220.75	1227.42	1266.67	1428.75
R2	1214.33	1213.50	1216.83	1233.67	1324.25
R1	1206.66	1206.00	1207.67	1212.92	1269.00
PPT	1202.08	1198.75	1197.25	1179.83	1164.50
S1	1194.41	1191.25	1187.92	1159.17	1109.25
S2	1189.83	1184.00	1177.33	1126.08	1004.75
S3	1182.16	1176.50	1168.17	1105.42	949.50

\* Blue color number turns into major resistance levels.

\* Green color number currently acts as a support level.

### 2. FOCUS NUMBERS (intra-day Position trading)

Sell levels	Buying levels
1207.75 (First Sell#)	1199.75 (First Buy #) *Dual number
1209.25 (Second Sell#)	1188.75 (second Buy #)

#### Trading rules for intra-day position trading:

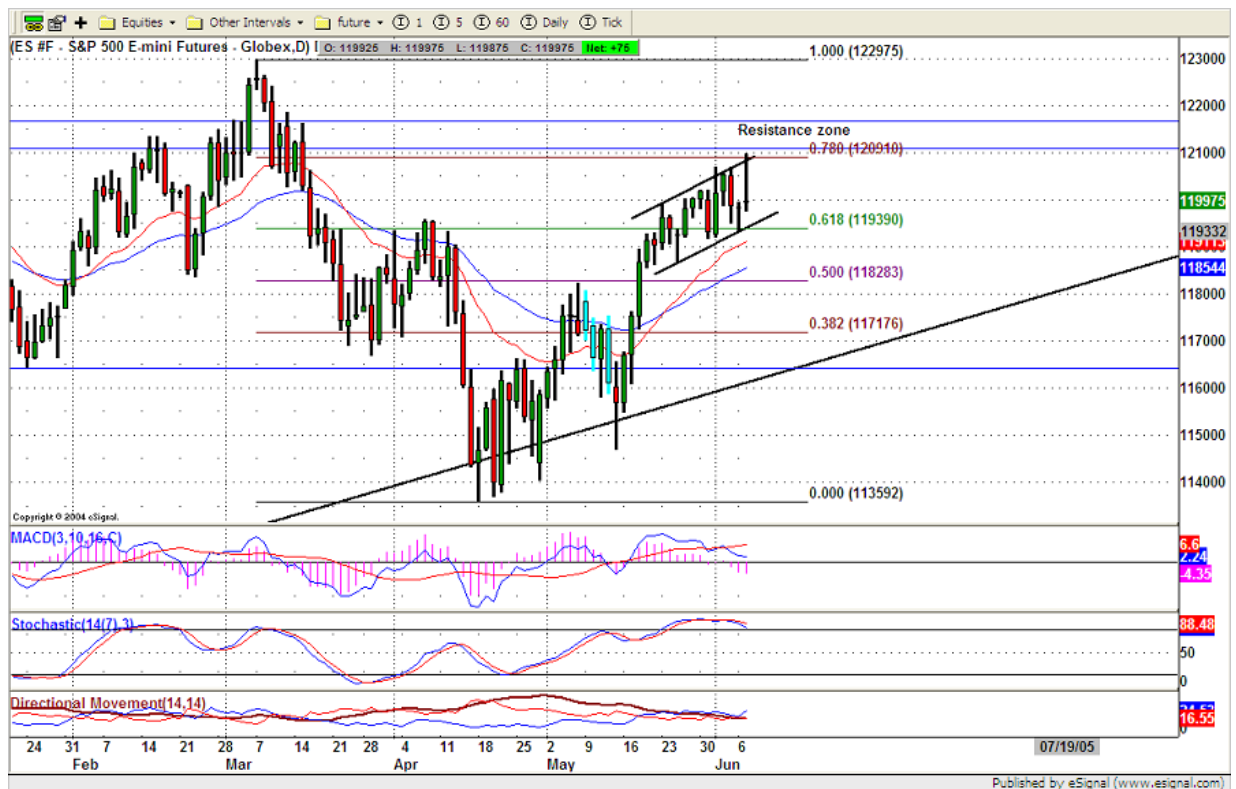
- **Dual number** could be used for long position when price trades above it. Also it could be used for short position when price trades below it. Inexperienced traders should not trade this number.
- For intra-day position traders, you have the potential to capture a big move if you are trading in the right direction. If you get stopped out two times in one direction, especially during a strong trend day. **STOP** trading for rest of the day.
- If you are a scalping trader, **DON'T** hold your position too long if you trading against the direction of a strong trend.
- If you are in right direction of the market movement, you can hold your position until price hit opposite major resistance or support level target.

### 3. MAJOR RESISTANCE AND SUPPORT LEVELS FOR TODAY

<b>Resistance</b>	1202.75	1204.75	1206.25	1209.50	1214.25
<b>Support</b>	1194.75	1192.25	1189.75	1187.50	1183.25

### 4. COMMENTARY

Yesterday ES hit its major resistance level around 1209.75 level which is 78% retracement from low. But it could not hold its gain. Instead it sold off in the afternoon and closed barely above water. Wednesday ES may try one more time to rest 1209 level. If it only can make half way through, odd will favor to push price down further. Then we have to see whether 1195 level can be held or not.



### 5. TODAY'S TRADING

ES 15mins chart shows ES sold off from its high level, and try to complete its bearish symmetrical pattern around 1195.50 level. If that level holds, it is very likely to bounce up to its 20ema line again. Only Breakout its 20ema line and holds above it, price has a hope to retest 1209 level again. Otherwise, shorts will continue to push price lower.



## 6. PREDICTION FOR TODAY'S MOVEMENT

### Current (interval=1.95)

1214.84	+2/8
1212.89	+1/8
1210.94	8/8
1208.98	7/8
1207.03	6/8
1205.08	5/8
1203.13	4/8
1201.17	3/8
1199.22	2/8
1197.27	1/8
1195.31	0/8
1193.36	-1/8
1191.41	-2/8

### Up (Interval=1.95)

1207.03	+2/8
1205.08	+1/8
1203.13	8/8
1201.17	7/8
1199.22	6/8
1197.27	5/8
1195.31	4/8
1193.36	3/8
1191.41	2/8
1189.45	1/8
1187.50	0/8
1185.55	-1/8
1183.59	-2/8

### Down (Interval=1.95)

1214.84	+2/8
1212.89	+1/8
1210.94	8/8
1208.98	7/8
1207.03	6/8
1205.08	5/8
1203.13	4/8
1201.17	3/8
1199.22	2/8
1197.27	1/8
1195.31	0/8
1193.36	-1/8
1191.41	-2/8

## 7. OTHER INDICATORS

<b>NatRSI</b>	<b>ATR</b>	<b>Waist number</b>
<b>0.42</b>	<b>8.28</b>	<b>1200</b>
<b>neutral</b>		

- NatRSI >80-90                      overbought  
 NatRSI >30 or <70                neutral  
 NatRSI <20                            oversold
- ATR** (Average true range) can be used for predicting intra-day's high and low.
- Waist number** is MMLine number, acting pivot number, can be used for support or resistance. Price trades above its level, market is bullish; price trades below its level, market is bearish.

## 8. WEEKLY ECONOMIC CALENDAR

Date	ET	Release	For	Consensus	Prior
Jun 08	10:00	Wholesale Inventories	Apr	0.4%	0.4%
Jun 09	08:30	Initial Claims	06/04	NA	350K
Jun 10	08:30	Export Prices ex-ag.	May	NA	0.5%
Jun 10	08:30	Import Prices ex-oil	May	NA	0.4%
Jun 10	08:30	Trade Balance	Apr	-\$58.0B	-\$55.0B
Jun 10	14:00	Treasury Budget	May	-\$47.0B	-\$62.5B