

Naturus



Daily trading plan for June 6, 2005

1. PIVOTS FOR ESM5

	Daily	Weekly	Biweekly	Monthly	Yearly
R3	1216.42	1220.75	1227.42	1266.67	1428.75
R2	1211.33	1213.50	1216.83	1233.67	1324.25
R1	1204.92	1206.00	1207.67	1212.92	1269.00
PPT	1199.83	1198.75	1197.25	1179.83	1164.50
S1	1193.42	1191.25	1187.92	1159.17	1109.25
S2	1188.33	1184.00	1177.33	1126.08	1004.75
S3	1181.92	1176.50	1168.17	1105.42	949.50

* Blue color number turns into major resistance levels.

* Green color number currently acts as a support level.

2. FOCUS NUMBERS (intra-day Position trading)

Sell levels	Buying levels
1206.00 (First Sell#)	1195.00 (First Buy #)
1209.75 (Second Sell#)	1187.25 (second Buy #)

Trading rules for intra-day position trading:

- **Dual number** could be used for long position when price trades above it. Also it could be used for short position when price trades below it. Inexperienced traders should not trade this number.
- For intra-day position traders, you have the potential to capture a big move if you are trading in the right direction. If you get stopped out two times in one direction, especially during a strong trend day. **STOP** trading for rest of the day.
- If you are a scalping trader, **DON' T** hold your position too long if you trading against the direction of a strong trend.
- If you are in right direction of the market movement, you can hold your position until price hit opposite major resistance or support level target.

3. MAJOR RESISTANCE AND SUPPORT LEVELS FOR TODAY

Resistance	1200.75	1204.75	1206.25	1209.50	1214.25
-------------------	---------	---------	---------	---------	---------

Support	1194.75	1192.25	1189.75	1187.50	1183.25
----------------	---------	---------	---------	---------	---------

4. COMMENTARY

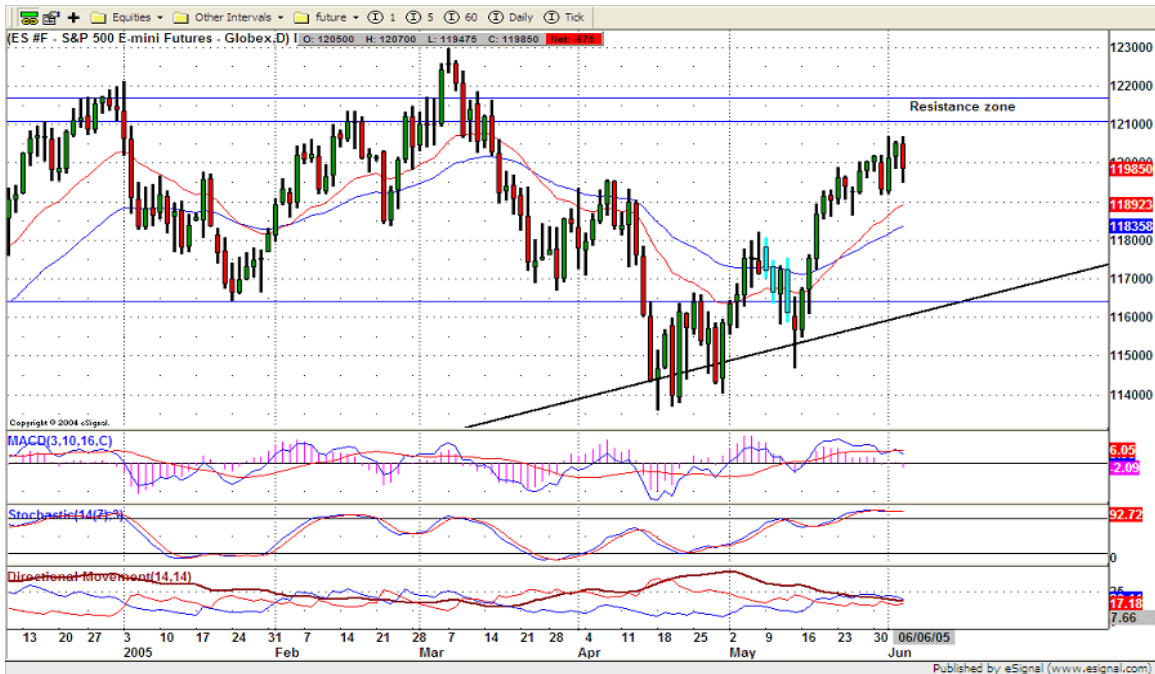
Last week, S&P500 (SPX) hit 30 day's high around 1205.53 level and reversed. On weekly chart, it formed a tiny doji pattern.

Based on indicators of this weekly chart, SPX hasn't showed any turning down signal yet. But we already saw SPX started to slow itself.



Let us look at ES daily chart. ES approached its resistance zone. It trades very close level as SPX. That is because this week has a rollover day and next week June contract will be expired. So all premium has been squeezed out before contract expires.

Based on September contract, it did hit 1212 level which was Bullish symmetrical pattern completion level we talked about last week. If that pattern stands, ES should go down this week. At least we should see ES retests its 20 day moving average line around 1189/1187 level.



5. TODAY'S TRADING

ES 30mins chart shows ES tries to retest its 20ema line in last half hour of Friday. Whether it can back up to retest its pervious high or not, it depends on today's open. If ES can't breakout its 20ema line, it will courage odds to push price lower. As soon as ES breakdown 1194 level, price more likely goes down to 1186.25 which bearish channel breakdown completion level. Indicators all show ES is in correction process.



Copyright 2004 by Natusur Inc. All rights are reserved and Printed in Canada. Photocopying and further distribution of this newsletter are strictly prohibited. Information, opinion, research, and commentary contained herein is obtained from sources believed to be reliable; their reliability, however, cannot be guaranteed. The maxim of Caveat Emptor applies – let the buyer beware! This newsletter is for education purpose only. It doesn't provide for individual investment advice, or act as an investment advisor, or individually advocate the purchase or sale of any security or investment. In making any investment decision, you will rely solely on your own review and examination of the facts and the records relating to such investments. Past performance of our recommendations is not an indication of future performance. We shall have no liability of whatever nature in respect of any claim, damages, loss or expense arising out of or in connection with the reliance by you on the contents of our newsletter, any promotion, published material, alert or update.

6. PREDICTION FOR TODAY'S MOVEMENT

Current (interval=1.95)

1207.03	+2/8
1205.08	+1/8
1203.13	8/8
1201.17	7/8
1199.22	6/8
1197.27	5/8
1195.31	4/8
1193.36	3/8
1191.41	2/8
1189.45	1/8
1187.50	0/8
1185.55	-1/8
1183.59	-2/8

Up (Interval=0.95)

1216.80	+2/8
1215.82	+1/8
1214.84	8/8
1213.87	7/8
1212.89	6/8
1211.91	5/8
1210.94	4/8
1209.96	3/8
1208.98	2/8
1208.01	1/8
1207.03	0/8
1206.05	-1/8
1205.08	-2/8

Down (Interval=1.95)

1199.22	+2/8
1197.27	+1/8
1195.31	8/8
1193.36	7/8
1191.41	6/8
1189.45	5/8
1187.50	4/8
1185.55	3/8
1183.59	2/8
1181.64	1/8
1179.69	0/8
1177.73	-1/8
1175.78	-2/8

7. OTHER INDICATORS

NatRSI	ATR	Waist number
0.88	7.95	1200.63
neutral		

- NatRSI >80-90 overbought
 NatRSI >30 or <70 neutral
 NatRSI <20 oversold
- ATR** (Average true range) can be used for predicting intra-day's high and low.
- Waist number** is Mmline number, acting pivot number, can be used for support or resistance. Price trades above its level, market is bullish; price trades below its level, market is bearish.

8. WEEKLY ECONOMIC CALENDAR

Date	ET	Release	For	Consensus	Prior
Jun 07	15:00	Consumer Credit	Apr	\$6.8B	\$5.5B
Jun 08	10:00	Wholesale Inventories	Apr	0.4%	0.4%
Jun 09	08:30	Initial Claims	06/04	NA	350K
Jun 10	08:30	Export Prices ex-ag.	May	NA	0.5%
Jun 10	08:30	Import Prices ex-oil	May	NA	0.4%
Jun 10	08:30	Trade Balance	Apr	-\$58.0B	-\$55.0B
Jun 10	14:00	Treasury Budget	May	-\$47.0B	-\$62.5B